

# LPX2000 SEED TREATER



**The LPX models combine the most innovative technology with the most popular seed treater on the market.**

The LPX Series is USC's next generation of seed treaters. The LPX utilizes a modular design allowing customers to fully customize their treater based on exact needs. Add multiple tanks and accessories any time, making the LPX a perfect treater to grow alongside any treating business. The LPX incorporates the same continuous flow seed treating benefits as USC's LP Series. Additionally, the quick release atomizer chamber offers convenient access for clean-up and inspection. The combination of quality, accuracy and modularity makes the LPX Series **the** choice for any seed business.

## QUICK FACTS & STATS:

- The LPX2000 treats 300-1,800 lbs./min. of soybeans
- Choose a 6', 8' or 10' carbon or stainless steel drum
- USC's patented atomizer accurately coats each seed
- Seed metering wheel is required on Automated LPX Treaters
- Real-time auto correcting of pump(s) and seed metering wheel on automated models
- 230 volt single phase, 230 volt three phase, 480 volt three phase & 575 volt three phase electrical panel options
- Automatic reporting capabilities on automated models
- LPX2000 has more standard features than competition:
  - Quick connect chemical port behind atomizer
  - 4 port quick connect chemical manifold with static mixer mounted to side of treater
  - 16" easy slide out atomizer chamber
  - Telescoping forklift pockets
- 12" touch screen on automated LPX models
- 6" touch screen on manual LPX models
- Variable speed drum and drum view window
- Easy seed flow and chemical calibration
- LPX controls up to 8 pump stands at once

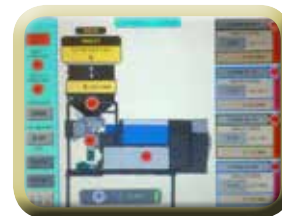


**LPX2000 TREATER & SEED WHEEL**

## PATENTED ATOMIZER



*This patented device sets USC's products apart from the competition. It evenly coats each seed with accuracy. The atomizer is the heart of all USC treaters.*



**LPX2000 AUTOMATED CONTROL PANEL**



**WATCH THE LPX2000 IN ACTION!**