

DRY ADDITIVE FEEDER™

The Dry Additive Feeder can be used to apply talc, micro-nutrients, dry inoculants, or other additives at an accurate rate. It is capable of working in conjunction with the treater using the auto mode.

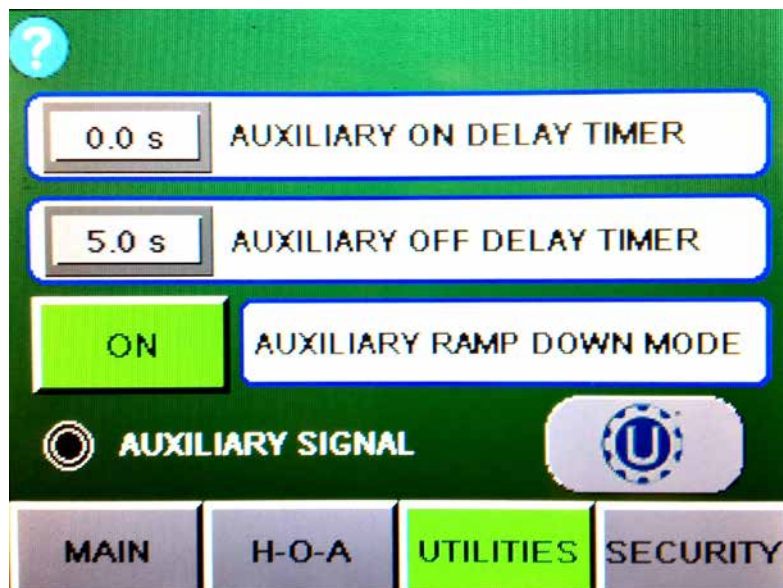
ADVANTAGES

- Ramp Down Functionality
- Mild Steel Product Contact and Base
- DAF Can Rotate 360° on Provided Stand
- 120-Volt Single Phase
- Variable Speed Drive
- 3.3 Cubic Foot Hopper with Lid
- Automated Control Panel
- Stand Includes Swivel Casters/Locks
- Adjustable Stand For Variable Heights
- Auto On/Off Feature Via Auxiliary Port Ties Directly To Treater
- Two Base Sizes
 - Standard 50" - 64"
 - Tall 64" - 78"

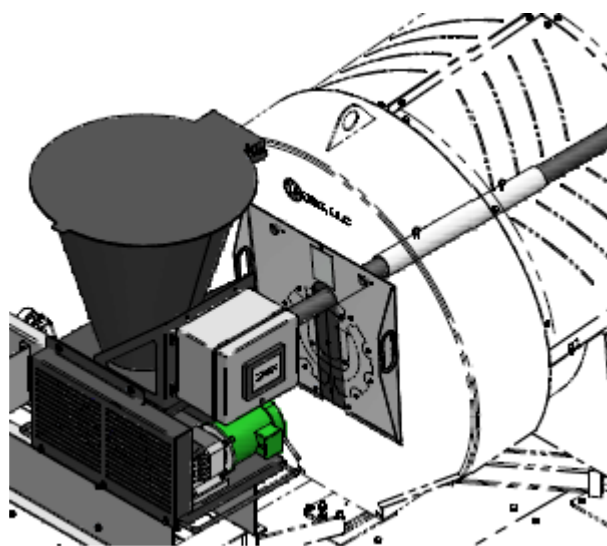
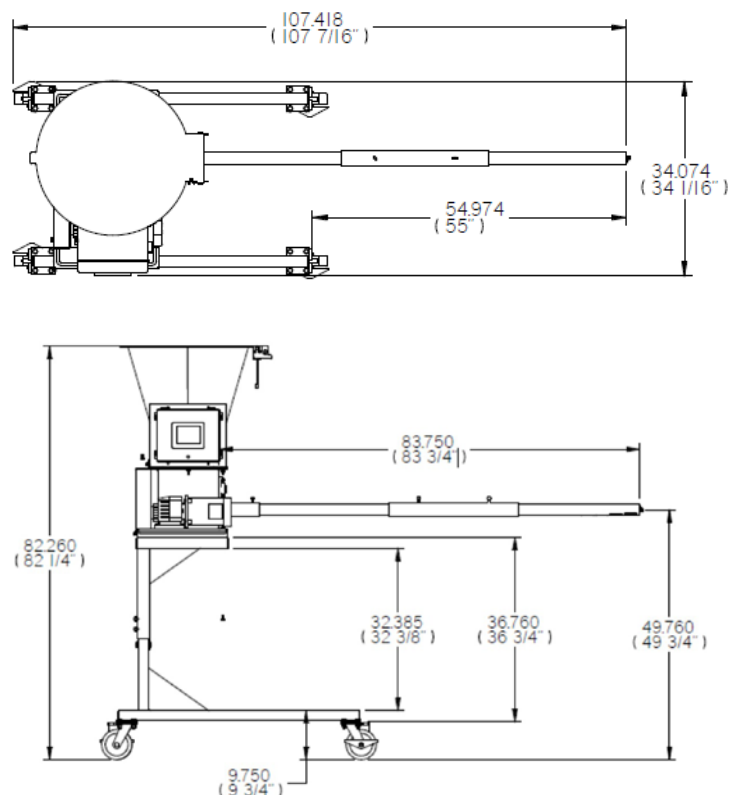


ADDITIONAL FEATURES

- Programmable up to 10 unique recipes. Recipe content includes: Product Weight, Treater Run Rate, Unit of Measure, Product Density, Calibration Ratio and Individual Recipe Name
- Auxiliary On/Off Display Timers
- Built in System Alarms: Lid Safety Alarm, Flow Rate Alarm, VFD Fault Alarm
- 3.3 cu. ft. Hopper with Lid
- 2" x 7' Auger
- 120V Single Phase



DIMENSIONS



Eliminate unnecessary chemical waste, saving you time and money. USC's Dry Additive Feeder allows you to fully customize your recipe giving you accurate, efficient control no matter what your application.