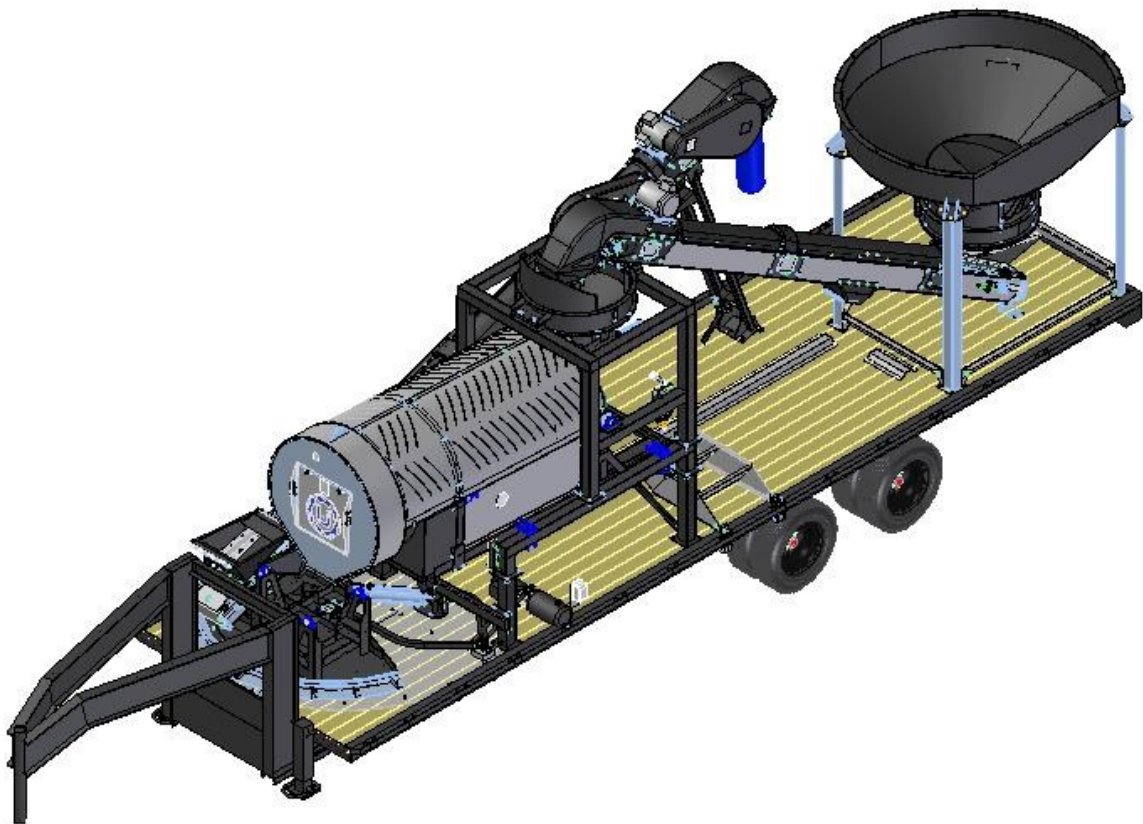




# PORTABLE LPX / LPV SEED TREATER

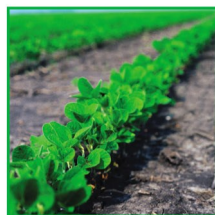
EQUIPMENT REVISION: 03C



## **PARTS MANUAL**

**Document: MD-09-06-5007**

**Revision: A Effective Date: 11-2019**



## **INTRODUCTION**

Thank you for choosing USC, LLC for your equipment needs. We appreciate your business and will work diligently to ensure that you are satisfied with your choice.

### **OVERVIEW**

The purpose of this manual is to provide you with the basic information needed to operate and maintain the Portable LPX Treater. It does not hold USC, LLC liable for any accidents or injuries that may occur.

The technical information provided in this document is based on extensive testing under controlled conditions at the USC research and development facility. This information is given without guarantee as the conditions of operation and storage of the equipment are beyond our control. Variables such as temperature, humidity, viscosity of chemical products and changes in seed size or variety may all effect the accuracy of application and seed coverage. Periodically check the equipment calibration while treating and make adjustments as required. This will insure the optimum seed coverage.

### **RECEIVING YOUR EQUIPMENT**

As soon as the equipment is received, it should be carefully inspected to make certain that it has sustained no damage during shipment and that all items listed on the packing list are accounted for. If there is any damage or shortages, the purchaser must immediately notify USC, LLC. Ownership passes to purchaser when the unit leaves the USC, LLC. premises. The purchaser is responsible for unloading and mounting all components of the equipment.

Document the serial number of the conveyors for future reference. The serialization labels are located on the right side of each conveyor near the inlet end.

**INLET CONVEYOR SERIAL NUMBER:** \_\_\_\_\_

**OUTLET CONVEYOR SERIAL NUMBER:** \_\_\_\_\_

PORTABLE LPX TREATER

Document the vehicle identification number for future reference. On gooseneck trailers, the V.I.N. is located on a sticker on the side near the top of the gooseneck as shown below.



V.I.N.  
Number

TRAILER V.I.N. NUMBER: \_\_\_\_\_

Document the vehicle identification number for future reference. On bumper hitch trailers, the V.I.N. is located on the side of the deck, in the left front corner.



V.I.N.  
Number

TRAILER V.I.N. NUMBER: \_\_\_\_\_

# TABLE OF CONTENTS

<u>Section</u>	<u>Contents</u>	<u>Page #</u>
Section A	Safety Instructions .....	5
Section B	Part Drawings .....	14
Section C	Index by Part Number .....	63
Section D	Limited Warranty .....	65

# SAFETY INSTRUCTIONS SECTION A

Every year accidents in the work place maim, kill and injure people. Although it may be impossible to prevent all accidents, with the right combination of training, operating practices, safety devices, and operator vigilance, the number of accidents can be significantly reduced. The purpose of this section is to educate equipment users about hazards, unsafe practices, and recommended hazard avoidance techniques.

## SAFETY WORDS AND SYMBOLS

It is very important that operators and maintenance personnel understand the words and symbols that are used to communicate safety information. Safety words, their meaning and format, have been standardized for U.S. manufacturers and published by the American National Standards Institute (ANSI). The European Community (E.C.) has adopted a different format based on the International Standards Organization (I.S.O.) and applicable machinery directives. Both formats are presented below. Graphic symbols are not standardized, but most manufacturers will use some variation of the ones seen in this manual.



Indicates an imminently hazardous situation which, if not avoided, **will** result in death or serious injury.



Indicates a potentially hazardous situation which, if not avoided, **could** result in death or serious injury.



Indicates a potentially hazardous situation which, if not avoided, **may** result in minor or moderate injury and/or property damage.



Provides additional information that the operator needs to be aware of to avoid a potentially hazardous situation.



**Mandatory Lockout Power Symbol.** Disconnect, lockout and tag-out electrical and other energy sources before inspecting, cleaning or performing maintenance on this panel.



**International Safety Alert Symbol.** The exclamation point (!) surrounded by a yellow triangle indicates that an injury hazard exists. However, it does not indicate the seriousness of potential injury. The exclamation point (!) is also used with the DANGER, WARNING and CAUTION symbols so the potential injury is indicated.



**Electrocution Hazard Symbol.** This symbol indicates that an electrocution hazard exists. Serious injury or death could result from contacting high voltage.



**International Electrocution Hazard.** This symbol indicates that an electrocution hazard exists. Serious injury or death could result from contacting high voltage.



**Mandatory Read Manual Action Symbol.** (I.S.O. format) This symbol instructs personnel to read the Operators Manual before servicing or operating the equipment.



**Mandatory Read Manual Action Symbol.** This symbol instructs personnel to read the Operators Manual before servicing or operating the equipment.

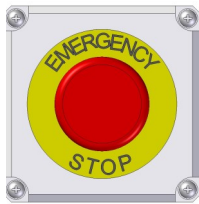
**NOTICE**

Notice is used to notify people of important installation, operation or maintenance information which is not hazard related.

## **LOCKOUT / TAGOUT PROCEDURES**

Lockout/Tagout is the placement of a lock/tag on an energy isolating device in accordance with an established procedure. When taking equipment out of service to perform maintenance or repair work, always follow the lockout/tagout procedures as outlined in ANSI Z344.1 and/or OSHA Standard 1910.147. This standard “requires employers to establish a program and utilize procedures for affixing appropriate lockout devices or tagout devices to energy isolating devices and to otherwise disable machines or equipment to prevent unexpected energizing, start-up, or release of stored energy in order to prevent injury to employees.”

### **EMERGENCY STOP**



There are three Emergency Stop push buttons on the Portable LPV Seed Treater. One is located on the I / O control panel mounted on the side of the treater, and one each on the Treater Control and Main Control Panels mounted on the side of the trailer. All Actuators of emergency stop shall be colored RED. The background immediately around the device actuator shall be colored YELLOW. The actuator pushbutton operated device shall be of the palm or mushroom head type.

### **NOTICE**

If the treater is equipped with the optional portable generator, there is also an emergency stop on the generator that would shut down the power source. This is not the preferred method for emergency shutdown.

### **CONTROLLED STOP**

This is the stopping of machine motion by reducing the electrical command signal to 0 (zero) once the stop signal has been recognized. The operator initiates this stop by pressing the PAUSE button at the bottom of the main screen.



### **WARNING**

#### **HAZARD REVIEW**

##### **Electrocution Hazard**

Electrocution accidents are most likely to occur during maintenance of the electrical system or when working on or near exposed high voltage wiring. This hazard does not exist when the electrical power has been disconnected, properly locked, and tagged out.

##### **Automatic Start Hazard**

This equipment may be controlled by an automated system and may start without warning. Failure to properly disconnect, lockout, and tagout all energy sources of remotely controlled equipment creates a very hazardous situation and could cause injury or even death. PLEASE STAY CLEAR AND BE ALERT.

## PORTABLE LPX TREATER

**YOU** are responsible for the **SAFE** operation and maintenance of your USC, LLC equipment . **YOU** must ensure that you and anyone else who is going to operate, maintain or work around the equipment be familiar with the operating and maintenance procedures and related **SAFETY** information contained in this manual. This manual will take you step-by-step through your working day and alert you to good safety practices that should be adhered to while operating the equipment

Remember, **YOU** are the key to safety. Good safety practices not only protect you, but also the people around you. Make these practices a working part of your safety program. Be certain that **EVERYONE** operating this equipment is familiar with the recommended operating and maintenance procedures and follows all the safety precautions. Most accidents can be prevented. Do not risk injury or death by ignoring good safety practices.

- Equipment owners must give operating instructions to operators or employees before allowing them to operate the machine, and at least annually thereafter per OSHA (Occupational Safety and Health Administration) regulation 1928.57.
- The most important safety device on this equipment is a **SAFE** operator. It is the operator's responsibility to read and understand **ALL** Safety and Operating instructions in the manual and to follow them. All accidents can be avoided.
- A person who has not read and understood all operating and safety instructions is not qualified to operate the machine. An untrained operator exposes himself and bystanders to possible serious injury or death.
- Do not modify the equipment in any way. Unauthorized modification may impair the function and/or safety and could affect the life of the equipment.
- Think SAFETY! Work SAFELY!

### GENERAL SAFETY

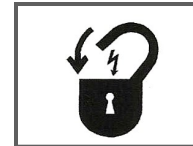
1. Read and understand the operator's manual and all safety labels before operating, maintaining, adjusting or unplugging the equipment .
2. Only trained persons shall operate the equipment . An untrained operator is not qualified to operate the machine.
3. Have a first-aid kit available for use should the need arise, and know how to use it.





## PORTABLE LPX TREATER

4. Provide a fire extinguisher for use in case of an accident. Store in a highly visible place.
5. Do not allow children, spectators or bystanders within hazard area of machine.
6. Wear appropriate protective gear. This includes but is not limited to:
  - A hard hat
  - Protective shoes with slip resistant soles
  - Protective goggles
  - Heavy gloves
  - Hearing protection
  - Respirator or filter mask
7. Place all controls in neutral or off, stop motor, and wait for all moving parts to stop. Then disable power source before servicing, adjusting, repairing, or unplugging.
8. Review safety related items annually with all personnel who will be operating or maintaining the equipment.



### **OPERATING SAFETY:**

1. Read and understand the operator's manual and all safety labels before using.
2. Disconnect and disable electrical supply completely and wait for all moving parts to stop before servicing, adjusting, repairing or unplugging.
3. Clear the area of bystanders, especially children, before starting.
4. Be familiar with the machine hazard area. If anyone enters hazard area, shut down machine immediately. Clear the area before restarting.
5. Keep hands, feet, hair and clothing away from all moving and/or rotating parts.
6. Stay away from overhead obstructions and power lines during operation and transporting. Electrocution can occur without direct contact.
7. Do not operate machine when any guards are removed.
8. Inspect welds and repair if needed.

### **PLACEMENT SAFETY**

1. Move only with the appropriate equipment
2. Stay away from overhead power lines when moving equipment. Electrocutation can occur without direct contact.
3. Be familiar with machine hazard area. If anyone enters hazard areas, shut down machine immediately. Clear the area before restarting.
4. Operate the equipment on level ground free of debris. Anchor the equipment to prevent tipping or upending.



Before placement of the equipment, be sure that ground is reasonably level. The equipment may topple or work improperly if the ground is too uneven, damaging the equipment and/or causing personal injury.

### **MAINTENANCE SAFETY**

1. Review the operator's manual and all safety items before working with, maintaining or operating the equipment.
2. Place all controls in neutral or off, stop motors, disable power source, and wait for all moving parts to stop before servicing, adjusting, repairing or unplugging.
3. Follow good shop practices:  
Keep service area clean and dry.  
Be sure electrical outlets and tools are properly grounded.  
Use adequate light for the job at hand.
4. Keep hands, feet, hair and clothing away from all moving and/or rotating parts.
5. Clear the area of bystanders, especially children, when carrying out any maintenance and repairs or making any adjustments.
6. Before resuming work, install and secure all guards when maintenance work is completed.
7. Keep safety labels clean. Replace any sign that is damaged or not clearly visible.



## **SAFETY LABELS**

1. Keep safety labels clean and legible at all times.
2. Replace safety labels that are missing or have become illegible.
3. Replaced parts that displayed a safety label should also display the current label.
4. Replacement safety labels are available. Contact your authorized dealer.

### **How to Install Safety Labels:**

- Be sure that the installation area is clean and dry.
- Be sure temperature is above 50°F (10°C).
- Decide on the exact position before you remove the backing paper.
- Remove the smallest portion of the split backing paper.
- Align the sign over the specified area and carefully press the small portion with the exposed sticky backing in place.
- Slowly peel back the remaining paper and carefully smooth the remaining portion of the sign in place.
- Small air pockets can be pierced with a pin and smoothed out using the piece of sign backing paper.



Located on the USC equipment you will find safety labels. Always be sure to read and follow all directions on the labels.



Guards provided with USC equipment are to remain in place during operation.

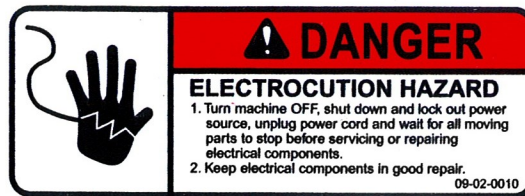
PORTABLE LPX TREATER

Think **SAFETY!** Work **SAFELY!**

REMEMBER—If safety labels have been damaged, removed, become illegible, or parts replaced without safety labels, new labels must be applied. New safety labels are available from your authorized dealer.



Part # 09-02-0003



Part # 09-02-0010

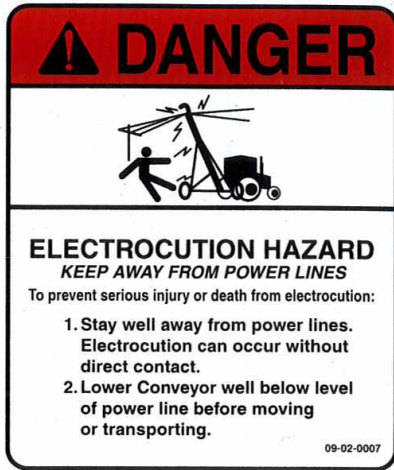


Part # 09-02-0001

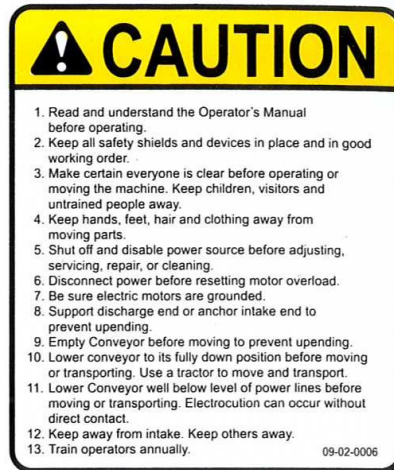


Part # 09-02-0002

PORTABLE LPX TREATER



Part # 09-02-0007



Part # 09-02-0006



Part # 09-02-0011



Part # 09-02-0009



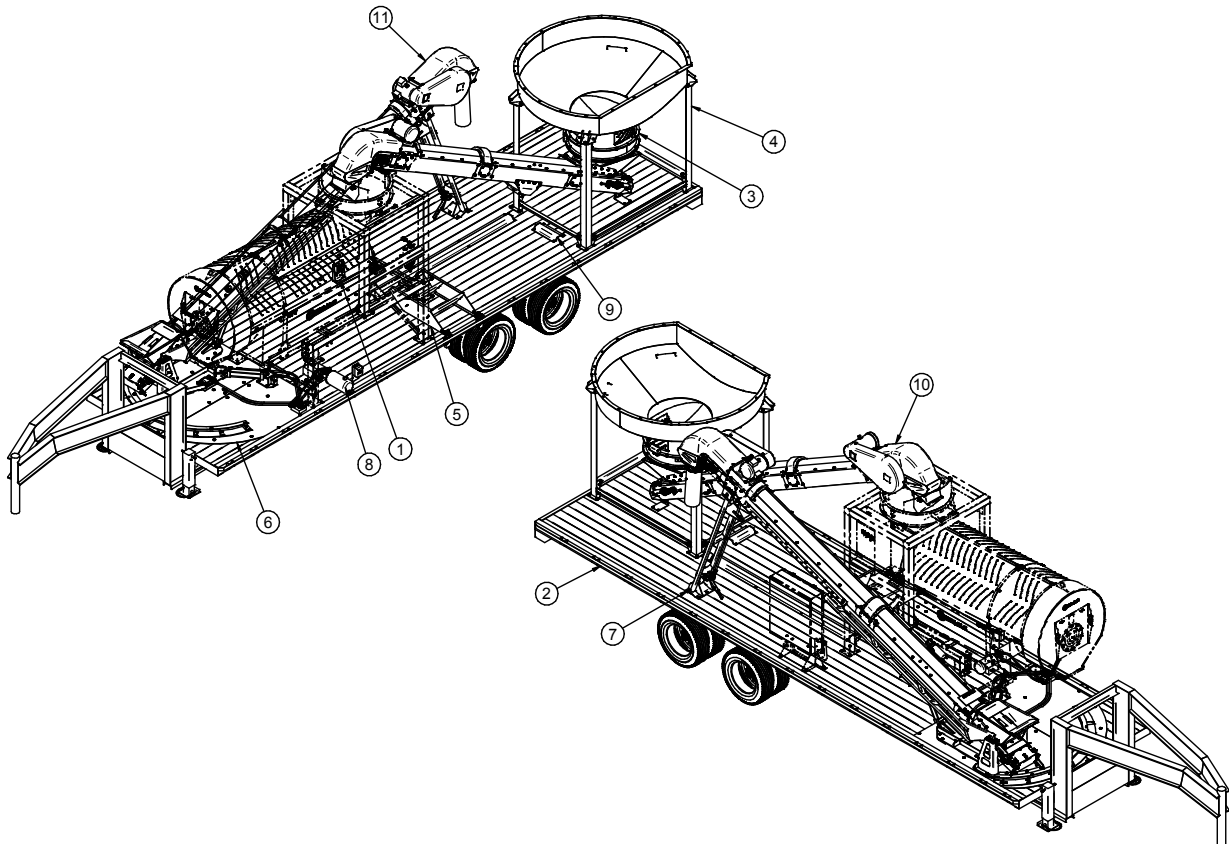
Part # 09-02-0012

**SECTION  
B**

**MECHANICAL DRAWINGS**

The following pages show the parts of the Portable Seed Treater, not including the treater or seed meter wheel. Refer to the treater parts manuals for those parts. Please have the treater serial number and part number ready when ordering parts.

**PORTABLE TREATER**



PORTABLE LPX TREATER

**PORTABLE TREATER**

13-01-0342 REV C ASSY PORT GSNK TRTR 240V / 1PH				
Item #	Part #	Description	Qty	See Page
1	03-06-0091	ASSY RECP WEATHERPROOF BOX/CVR 20A	1	
2	12-02-0016	TRLR GSNK 30FT COMPLETE	1	
3	13-04-0201	ASSY SEED METER WHL LPX/LPV 240V	1	
4	13-04-0257	ASSY HOPP PORT LPV	1	21
5	13-05-0592	ASSY FOLD UP STEP PORT	1	58
6	13-05-0594	ASSY LPV PORT PIVOT	1	49
7	13-05-0622	ASSY CNVR REST W/LK PORT	1	53
8	13-08-0721	ASSY ELEC PWR PK LPV PORT 120V	1	55
9	13-10-0055	KIT HDWR LPV PORT TRTR	1	61
10	TS2511742PV	TS25 CONVEYOR 1.5IN BRGS & PULLEYS	1	22
11	TS2512062PV	TS25 CONVEYOR 1.5IN BRGS & PULLEYS	1	24
13-01-0347 REV C ASSY GSNK TRTR 240V / 3PH				
Item #	Part #	Description	Qty	See Page
1	03-06-0091	ASSY RECP WEATHERPROOF BOX/CVR 20A	1	
2	12-02-0016	TRLR GSNK 30FT COMPLETE	1	
3	13-04-0201	ASSY SEED METER WHL LPX/LPV 240V	1	
4	13-04-0257	ASSY HOPP PORT LPV	1	21
5	13-05-0592	ASSY FOLD UP STEP PORT	1	58
6	13-05-0594	ASSY LPV PORT PIVOT	1	49
7	13-05-0622	ASSY CNVR REST W/LK PORT	1	53
8	13-08-0721	ASSY ELEC PWR PK LPV PORT 120V	1	55
9	13-10-0055	KIT HDWR LPV PORT TRTR	1	61
10	TS2521744PV	TS25 CONVEYOR 1.5IN BRGS & PULLEYS	1	22
11	TS2522064PV	TS25 CONVEYOR 1.5IN BRGS & PULLEYS	1	24

PORTABLE LPX TREATER

**PORTABLE TREATER**

13-01-0344 REV C ASSY GSNK TRTR 480V / 3PH				
Item #	Part #	Description	Qty	See Page
1	03-06-0091	ASSY RECP WEATHERPROOF BOX/CVR 20A	1	
2	12-02-0016	TRLR GSNK 30FT COMPLETE	1	
3	13-04-0231	ASSY SEED METER WHL LPX/LPV 380-480	1	
4	13-04-0257	ASSY HOPP PORT LPV	1	21
5	13-05-0592	ASSY FOLD UP STEP PORT	1	58
6	13-05-0594	ASSY LPV PORT PIVOT	1	49
7	13-05-0622	ASSY CNVR REST W/LK PORT	1	53
8	13-08-0721	ASSY ELEC PWR PK LPV PORT 120V	1	55
9	13-10-0055	KIT HDWR LPV PORT TRTR	1	61
10	TS2531745PV	TS25 CONVEYOR 1.5IN BRGS & PULLEYS	1	22
11	TS2532065PV	TS25 CONVEYOR 1.5IN BRGS & PULLEYS	1	24
13-01-0351 REV C ASSY GSNK TRTR 380V / 3PH				
Item #	Part #	Description	Qty	See Page
1	03-06-0091	ASSY RECP WEATHERPROOF BOX/CVR 20A	1	
2	12-02-0016	TRLR GSNK 30FT COMPLETE	1	
3	13-04-0231	ASSY SEED METER WHL LPX/LPV 380-480	1	
4	13-04-0257	ASSY HOPP PORT LPV	1	21
5	13-05-0592	ASSY FOLD UP STEP PORT	1	58
6	13-05-0594	ASSY LPV PORT PIVOT	1	49
7	13-05-0622	ASSY CNVR REST W/LK PORT	1	53
8	13-08-0721	ASSY ELEC PWR PK LPV PORT 120V	1	55
9	13-10-0055	KIT HDWR LPV PORT TRTR	1	61
10	TS2591747PV	TS25 CONVEYOR 1.5IN BRGS & PULLEYS	1	22
11	TS2592067PV	TS25 CONVEYOR 1.5IN BRGS & PULLEYS	1	24



PORTABLE LPX TREATER

**PORTABLE TREATER**

13-01-0349 REV C ASSY GSNK TRTR 575V / 3PH				
Item #	Part #	Description	Qty	See Page
1	03-06-0091	ASSY RECP WEATHERPROOF BOX/CVR 20A	1	
2	12-02-0016	TRLR GSNK 30FT COMPLETE	1	
3	13-04-0222	ASSY SEED METER WHL LPX/LPV 575V	1	
4	13-04-0257	ASSY HOPP PORT LPV	1	21
5	13-05-0592	ASSY FOLD UP STEP PORT	1	58
6	13-05-0594	ASSY LPV PORT PIVOT	1	49
7	13-05-0622	ASSY CNVR REST W/LK PORT	1	53
8	13-08-0721	ASSY ELEC PWR PK LPV PORT 120V	1	55
9	13-10-0055	KIT HDWR LPV PORT TRTR	1	61
10	TS2541746PV	TS25 CONVEYOR 1.5IN BRGS & PULLEYS	1	22
11	TS2542066PV	TS25 CONVEYOR 1.5IN BRGS & PULLEYS	1	24
13-01-0345 REV C ASSY BMPR TRTR 240V / 1PH				
Item #	Part #	Description	Qty	See Page
1	03-06-0091	ASSY RECP WEATHERPROOF BOX/CVR 20A	1	
2	12-02-0017	TRLR BMPR 30FT COMPLETE	1	
3	13-04-0201	ASSY SEED METER WHL LPX/LPV 240V	1	
4	13-04-0257	ASSY HOPP PORT LPV	1	21
5	13-05-0592	ASSY FOLD UP STEP PORT	1	58
6	13-05-0594	ASSY LPV PORT PIVOT	1	49
7	13-05-0622	ASSY CNVR REST W/LK PORT	1	53
8	13-08-0721	ASSY ELEC PWR PK LPV PORT 120V	1	55
9	13-10-0055	KIT HDWR LPV PORT TRTR	1	61
10	TS2511742PV	TS25 CONVEYOR 1.5IN BRGS & PULLEYS	1	22
11	TS2512062PV	TS25 CONVEYOR 1.5IN BRGS & PULLEYS	1	24

PORTABLE LPX TREATER

**PORTABLE TREATER**

13-01-0346 REV C ASSY BMPR TRTR 240V / 3PH				
Item #	Part #	Description	Qty	See Page
1	03-06-0091	ASSY RECP WEATHERPROOF BOX/CVR 20A	1	
2	12-02-0017	TRLR BMPR 30FT COMPLETE	1	
3	13-04-0201	ASSY SEED METER WHL LPX/LPV 240V	1	
4	13-04-0257	ASSY HOPP PORT LPV	1	21
5	13-05-0592	ASSY FOLD UP STEP PORT	1	58
6	13-05-0594	ASSY LPV PORT PIVOT	1	49
7	13-05-0622	ASSY CNVR REST W/LK PORT	1	53
8	13-08-0721	ASSY ELEC PWR PK LPV PORT 120V	1	55
9	13-10-0055	KIT HDWR LPV PORT TRTR	1	61
10	TS2521744PV	TS25 CONVEYOR 1.5IN BRGS & PULLEYS	1	22
11	TS2522064PV	TS25 CONVEYOR 1.5IN BRGS & PULLEYS	1	24
13-01-0343 REV C ASSY BMPR TRTR 480V / 3PH				
Item #	Part #	Description	Qty	See Page
1	03-06-0091	ASSY RECP WEATHERPROOF BOX/CVR 20A	1	
2	12-02-0017	TRLR BMPR 30FT COMPLETE	1	
3	13-04-0231	ASSY SEED METER WHL LPX/LPV 380-480	1	
4	13-04-0257	ASSY HOPP PORT LPV	1	21
5	13-05-0592	ASSY FOLD UP STEP PORT	1	58
6	13-05-0594	ASSY LPV PORT PIVOT	1	49
7	13-05-0622	ASSY CNVR REST W/LK PORT	1	53
8	13-08-0721	ASSY ELEC PWR PK LPV PORT 120V	1	55
9	13-10-0055	KIT HDWR LPV PORT TRTR	1	61
10	TS2531745PV	TS25 CONVEYOR 1.5IN BRGS & PULLEYS	1	22
11	TS2532065PV	TS25 CONVEYOR 1.5IN BRGS & PULLEYS	1	24

PORTABLE LPX TREATER

**PORTABLE TREATER**

13-01-0350 REV C ASSY BMPR TRTR 380V / 3PH				
Item #	Part #	Description	Qty	See Page
1	03-06-0091	ASSY RECP WEATHERPROOF BOX/CVR 20A	1	
2	12-02-0017	TRLR BMPR 30FT COMPLETE	1	
3	13-04-0231	ASSY SEED METER WHL LPX/LPV 380-480	1	
4	13-04-0257	ASSY HOPP PORT LPV	1	21
5	13-05-0592	ASSY FOLD UP STEP PORT	1	58
6	13-05-0594	ASSY LPV PORT PIVOT	1	49
7	13-05-0622	ASSY CNVR REST W/LK PORT	1	53
8	13-08-0721	ASSY ELEC PWR PK LPV PORT 120V	1	55
9	13-10-0055	KIT HDWR LPV PORT TRTR	1	61
10	TS2591747PV	TS25 CONVEYOR 1.5IN BRGS & PULLEYS	1	22
11	TS2592067PV	TS25 CONVEYOR 1.5IN BRGS & PULLEYS	1	24
13-01-0348 REV C ASSY BMPR TRTR 575V / 3PH				
Item #	Part #	Description	Qty	See Page
1	03-06-0091	ASSY RECP WEATHERPROOF BOX/CVR 20A	1	
2	12-02-0017	TRLR BMPR 30FT COMPLETE	1	
3	13-04-0222	ASSY SEED METER WHL LPX/LPV 575V	1	
4	13-04-0257	ASSY HOPP PORT LPV	1	21
5	13-05-0592	ASSY FOLD UP STEP PORT	1	58
6	13-05-0594	ASSY LPV PORT PIVOT	1	49
7	13-05-0622	ASSY CNVR REST W/LK PORT	1	53
8	13-08-0721	ASSY ELEC PWR PK LPV PORT 120V	1	55
9	13-10-0055	KIT HDWR LPV PORT TRTR	1	61
10	TS2541746PV	TS25 CONVEYOR 1.5IN BRGS & PULLEYS	1	22
11	TS2542066PV	TS25 CONVEYOR 1.5IN BRGS & PULLEYS	1	24

PORTABLE LPX TREATER

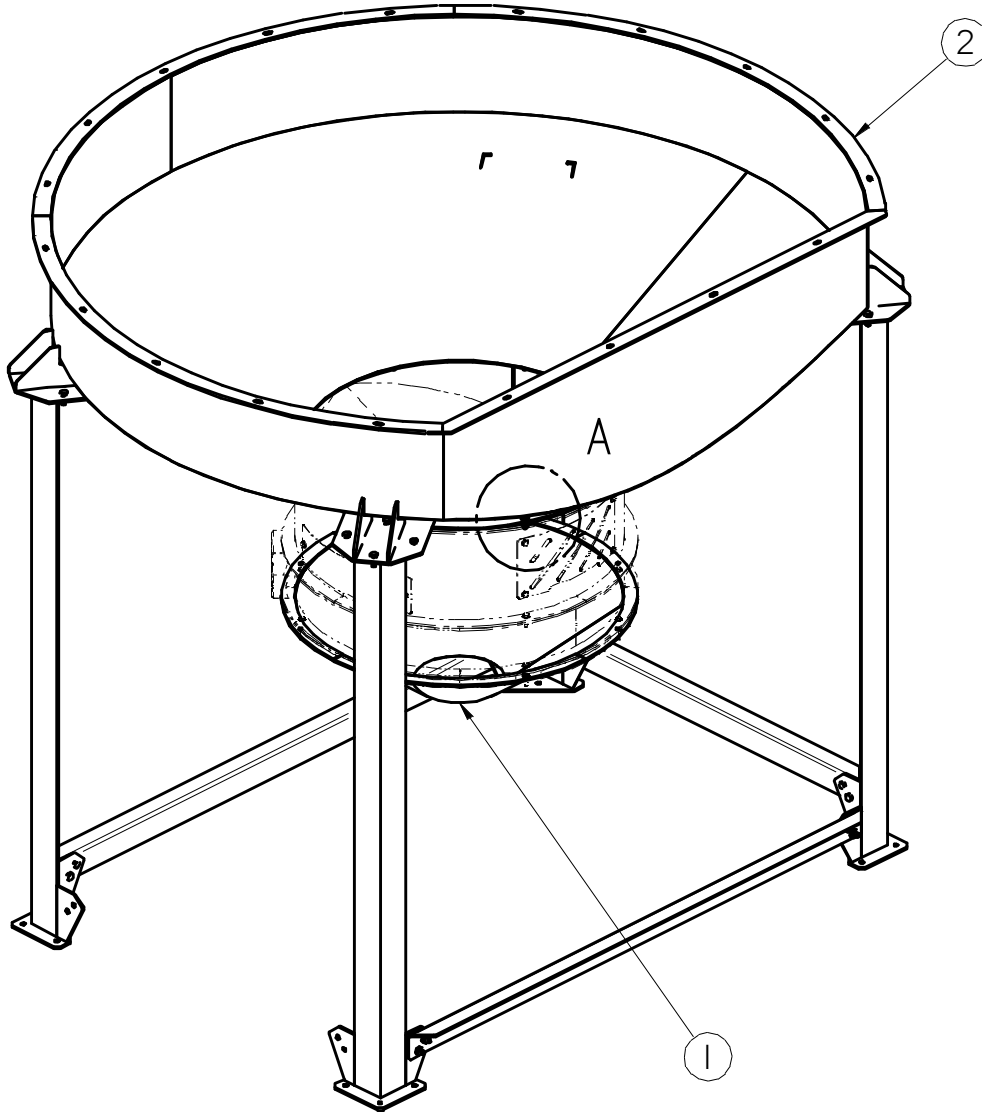
**PORTABLE TREATER**

SMW #	SMW DESCRIPTION	Qty	See Page
13-04-0201	ASSY SEED METER WHL LPX/LPV 240V	1	TREATER
13-04-0222	ASSY SEED METER WHL LPX/LPV 575V	1	PARTS
13-04-0231	ASSY SEED METER WHL LPX/LPV 380-480	1	MANUAL

TRAILER #	TRAILER DESCRIPTION
12-02-0016	TRLR GSNK 30FT COMPLETE
12-02-0017	TRLR BMPR 30FT COMPLETE

PORTABLE LPX TREATER

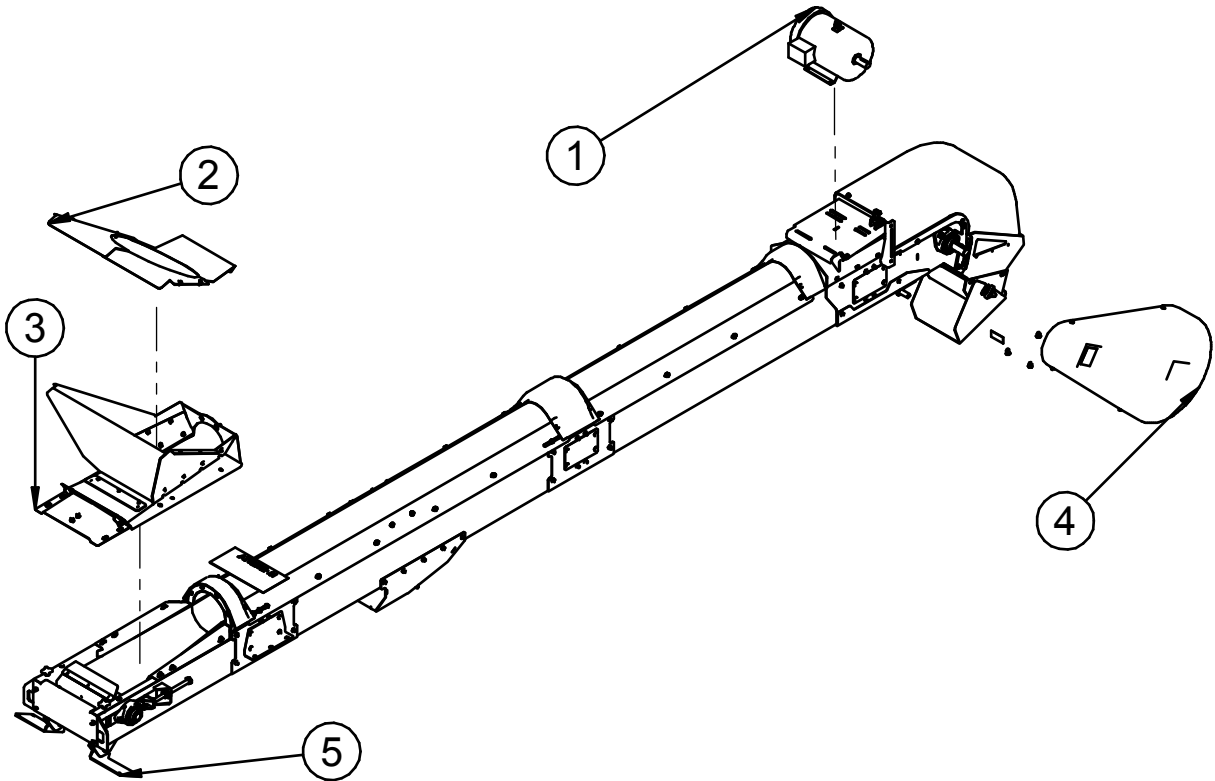
**ASSEMBLY PORTABLE HOPPER (13-04-0257 REV A0)**



PART #		13-04-0257 REV A A0		
Item #	Part #	Description	Qty	See Page
1	05-03-0282	WDMT HOPP SMW DSCHG	1	
2	05-07-0080	ASSY 80 UNIT PORT HPPR FLSD FOR SMW	1	
3	06-01-0189	BOLT FLG .375-16 X 1.250 ZP GR5	8	
4	06-03-0014	NUT LOCK FLG .375-16 ZP GR5	8	

PORTABLE LPX TREATER

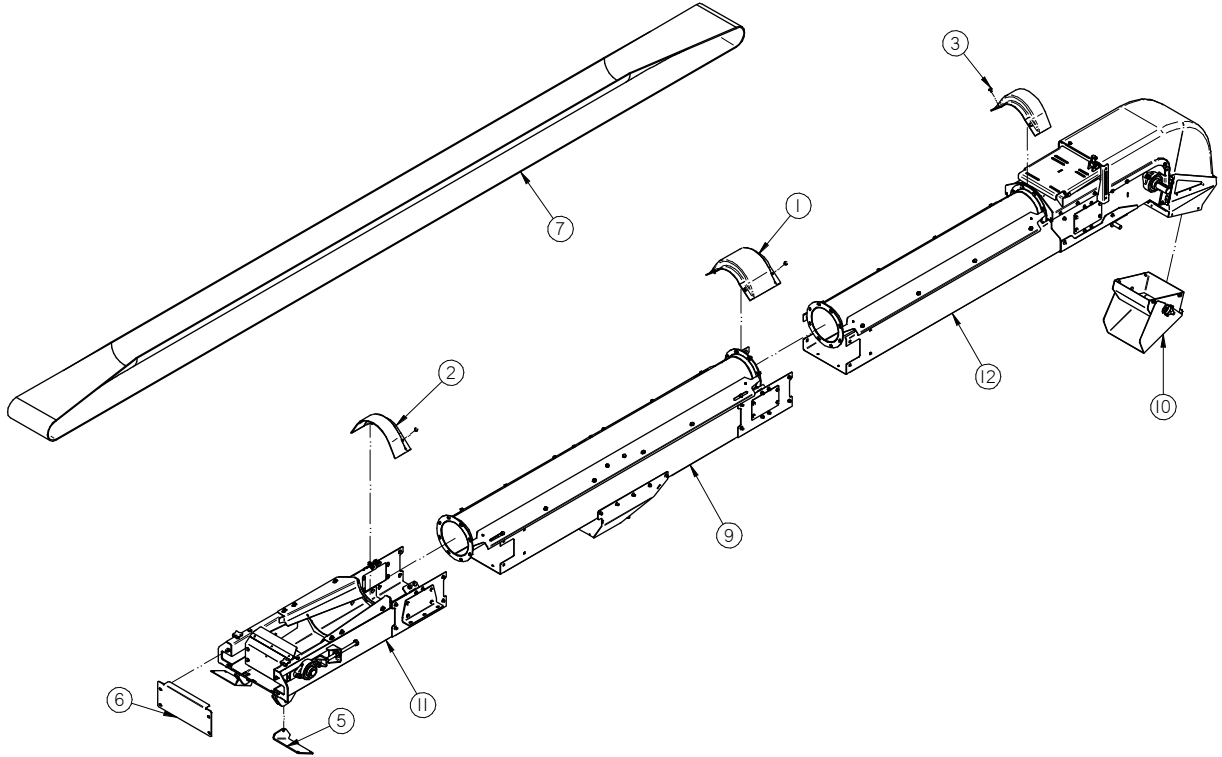
**ASSEMBLY LPV TREATER FILL CONVEYOR (TS25x174xPV REV A0)**



PART #		TS25x174xPV		
Item #	Part #	Description	Qty	See Page
1	SEE CHART	MTR 5HP 1760RPM 184T TEFC	1	33
2	13-05-0734	KIT SEAL INLET LPV	1	44
3	13-08-0540	ASSY LG RIGID INLET HOPPER TS25	1	43
4	13-08-0783	KIT DRV 5HP TS25 DD LG BRG	1	32
5	13-08-0806	ASSY TS25 17FT BASE PORT LPV	1	23

PORTABLE LPX TREATER

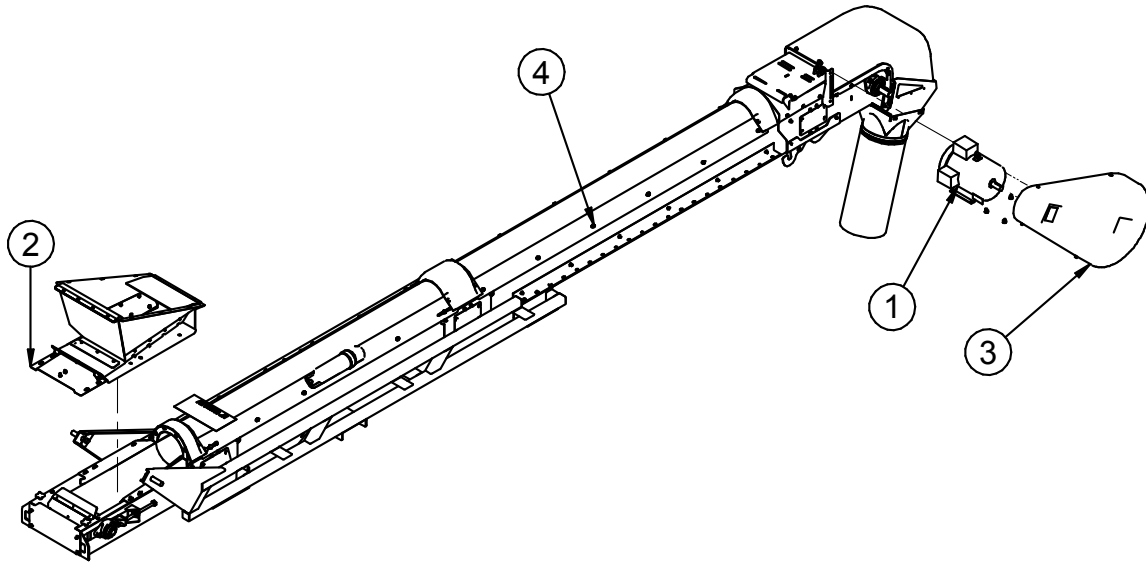
**ASSEMBLY TS25 LPV 17FT BASE (13-08-0806 REV A1)**



PART #		13-08-0806 REV A1		
Item #	Part #	Description	Qty	See Page
1	05-06-0111	CVR SPLICE RND CNV 8IN	1	
2	05-06-0112	CVR SPLICE INLET RND CNV 8IN	2	
3	06-01-0261	BOLT FLG .3125-18 X .500 ZP GR5	8	
4	09-02-0016	LBL ATWRK ATT BELT ALIGN	1	
5	102F37	FLR MNT CNVR BRKT	2	
6	103B89	PLT REAR CVR	1	
7	11-02-0136	BELT CNVR CLTS TS1712	1	
8	13-05-0353	DECAL PKG TS CNVRS	1	
9	13-08-0668	ASSY INLET EXT CLEAN OUT	1	37
10	13-08-0705	ASSY ADJ SPOUT TS CNVRS	1	35
11	13-08-0747	ASSY INLET SECT TS25 LG BRG	1	39
12	13-08-0798	ASSY HD SECT TS2517 LPV-PORT	1	27

PORTABLE LPX TREATER

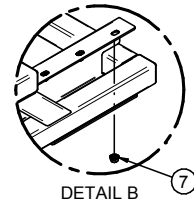
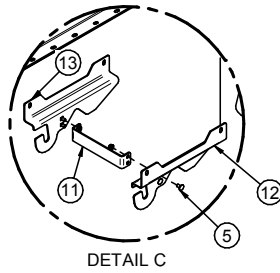
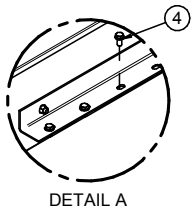
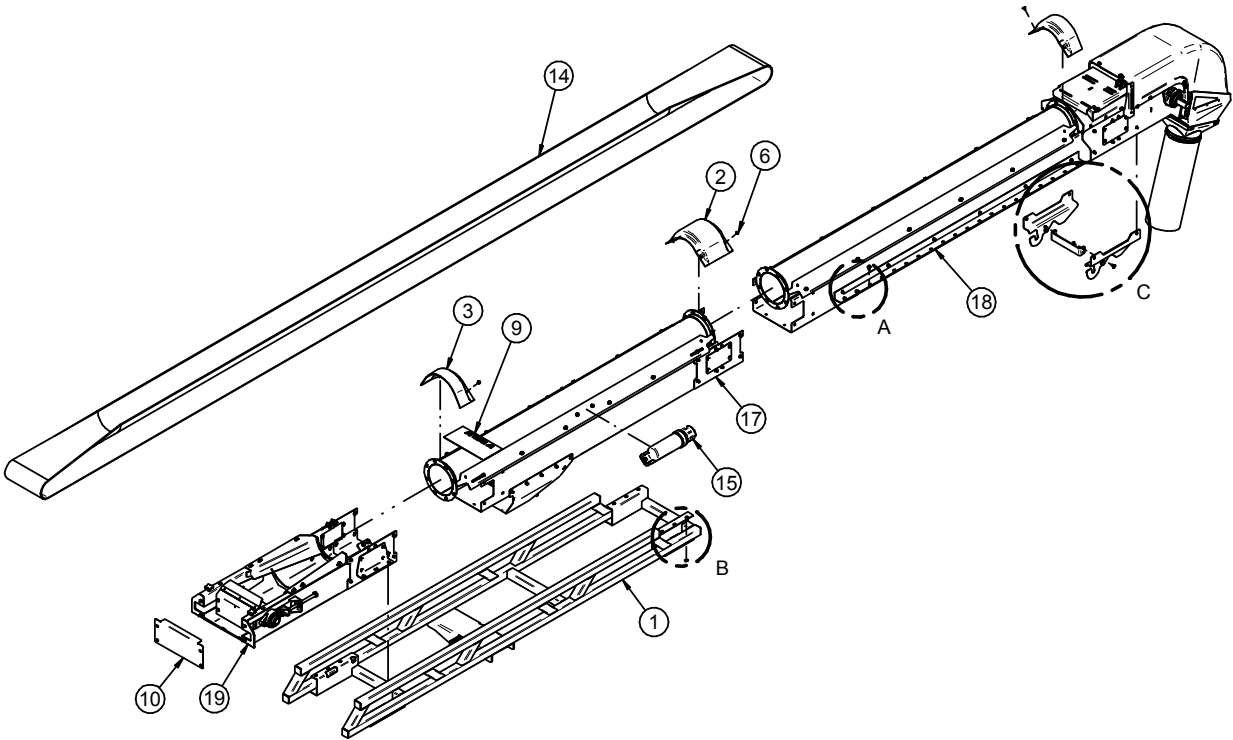
**ASSEMBLY LPV & LPX OUTPUT CONVEYOR (TS25x206xPV REV A0)**



PART #		TS25x206xPV		
Item #	Part #	Description	Qty	See Page
1	SEE CHART	MTR 5HP 1750RPM 184T TEFC 1PH	1	33
2	13-08-0736	ASSY INLET HOP TS25 LPV PORT	1	45
3	13-08-0783	KIT DRV 5HP TS25 DD LG BRG	1	32
4	13-08-0808	ASSY TS25 20FT BASE PORT LPV	1	25



PORTABLE LPX TREATER  
**ASSEMBLY TS25 20FT BASE (13-08-0808 REV A1)**



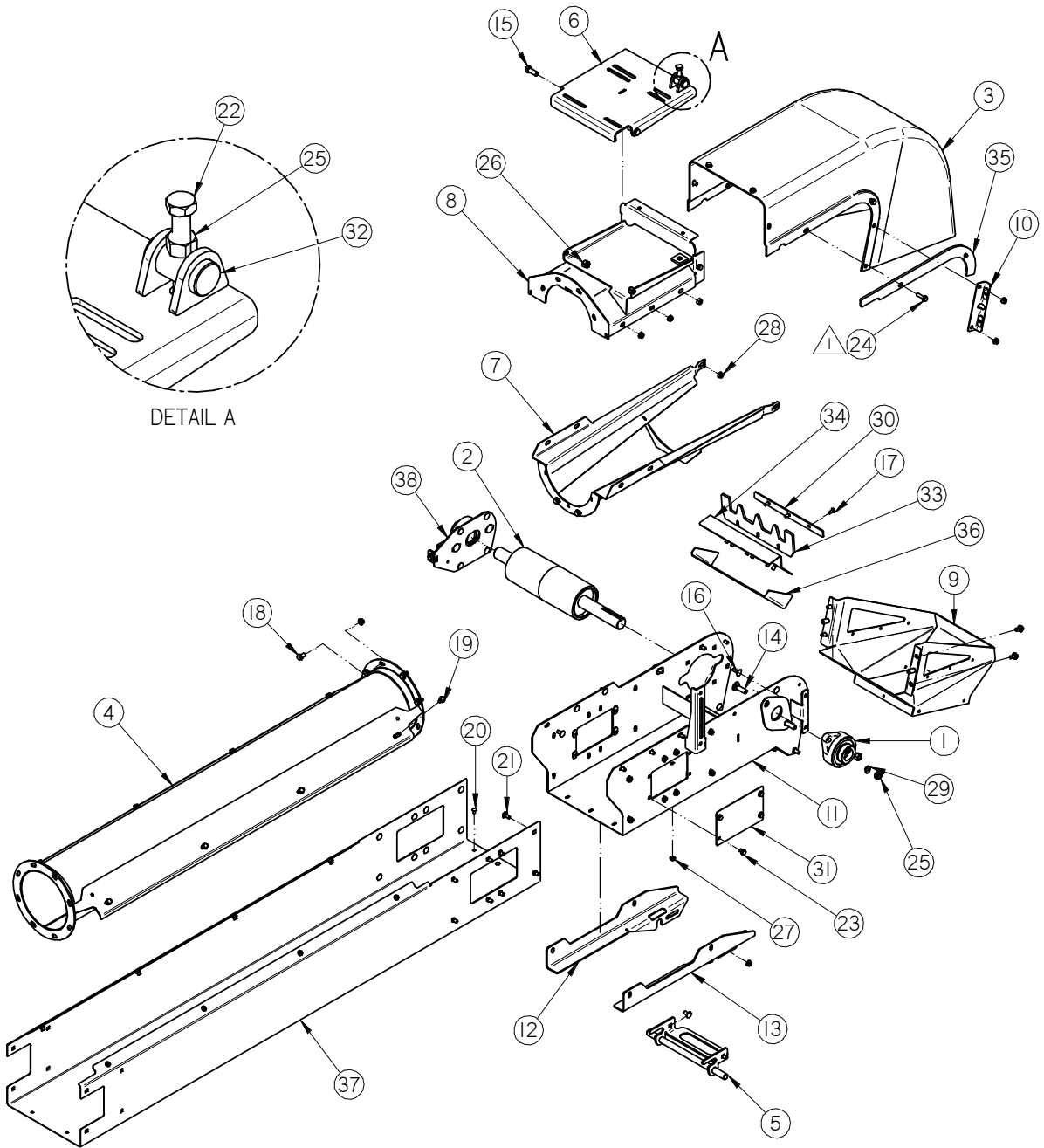
PORTABLE LPX TREATER

**ASSEMBLY TS25 20FT BASE (13-08-0808 REV A1)**

PART #		13-08-0808 REV A A1		
Item #				
1	05-03-1689	WDMT PORT OUTLET CNVR SUPP FRM	1	
2	05-06-0111	CVR SPLICE RND CNV 8IN	1	
3	05-06-0112	CVR SPLICE INLET RND CNV 8IN	2	
4	06-01-0124	BOLT FLG .375-16 X .750 ZP GR5	12	
5	06-01-0153	BOLT CRG .375-16X.750 ZP SHORT NECK	4	
6	06-01-0261	BOLT FLG .3125-18 X .500 ZP GR5	8	
7	06-03-0014	NUT LOCK FLG .375-16 ZP GR5	16	
8	09-01-0178	LBL ATWK TS2520	2	
9	09-02-0016	LBL ATWRK ATT BELT ALIGN	1	
10	103B89	PLT REAR CVR	1	
11	1058EF	STRAP TIE	1	
12	1058FE	PLT CNVR LOCK RH	1	
13	1058FF	PLT CNVR LOCK LH	1	
14	11-02-0139	BELT CNVR CLTS TS2012	1	
15	13-05-0332	ASSY MANUAL TUBE MNT	1	48
16	13-05-0353	DECAL PKG TS CNVRS	1	
17	13-08-0707	ASSY INLET CLNOUT TS25 PORT	1	38
18	13-08-0782	ASSY HEAD SECT TS25 LG BRG	1	30
19	13-08-0790	ASSY INLET SECT TS25 LPV LG BRG	1	41

PORTABLE LPX TREATER

**ASSEMBLY HEAD SECTION TS25 17 FT (13-08-0798 REV A1)**



PORTABLE LPX TREATER

**ASSEMBLY HEAD SECTION TS25 17 FT (13-08-0798 REV A1)**

PART #		13-08-0798 REV A1		
Item #	Part #	Description	Qty	See Page
1	01-03-0077	BRG FLG MNT 1.500ID 2BOLT ECNTRC	1	
2	01-08-0132	PULLEY HEAD 4.50DIA X 11.50W LG BRG	1	
3	05-06-0131	CVR HD TS25 DD	1	
4	05-08-0414	WDMT TUBE 8IN X 60IN	1	
5	05-08-0529	WDMT LOCK PORT CNVR	1	
6	05-08-0549	WDMT MTR MNT PLT LG	1	
7	05-08-0564	WDMT HD TRANS TS25	1	
8	05-08-0565	WDMT HD CVR TS25	1	
9	05-08-0567	WDMT DSCHG HD SPOUT TS25	1	
10	05-08-0568	WDMT DSCHG HD MNT PLT	2	
11	05-08-0709	WDMT HD TS25 LG BRG	1	
12	05-10-4605	BRKT MNT LPV PORT LH	1	
13	05-10-4606	BRKT MNT LPV PORT RH	1	
14	06-01-0026	BOLT CRG .500-13 X 1.75 ZP GR5	2	
15	06-01-0080	BOLT .500-13 X 1.25 ZP GR5	2	
16	06-01-0115	BOLT CRG .375-16 X 1.00 ZP GR5	4	
17	06-01-0122	BOLT CRG .250-20 X .750 ZP GR5	3	
18	06-01-0124	BOLT FLG .375-16 X .750 ZP GR5	10	
19	06-01-0138	BOLT FLG .3125-18 X .750 ZP GR5	12	
20	06-01-0150	BOLT CRG .250-20 X .500 ZP	6	
21	06-01-0153	BOLT CRG .375-16X.750 ZP SHORT NECK	32	
22	06-01-0221	BOLT .500-13 X 4.50 ZP GR5 FTH	1	
23	06-01-0261	BOLT FLG .3125-18 X .500 ZP GR5	8	
24	06-01-0343	BOLT FLG .3125-18 X 1.25 ZP GR5	4	
25	06-02-0004	NUT FULL .500-13 ZP GR5	3	
26	06-03-0004	NUT NYL LOCK .500-13 ZP GR5	2	
27	06-03-0013	NUT LOCK FLG .250-20 ZP GR5	9	
28	06-03-0014	NUT LOCK FLG .375-16 ZP GR5	42	
29	06-04-0004	WSHR LOCK SPLT .500 ZP	2	
30	103B39	PLT SCRAPPER HLDR 12IN CNVR	1	
31	103B9A	PLT SPLICE COVER	2	
32	10414A	PIN MTR PIVOT	1	
33	104259	RBBR SCRAPER 12IN FILL	1	
34	104C11	PLT BAFFLE MNT	1	

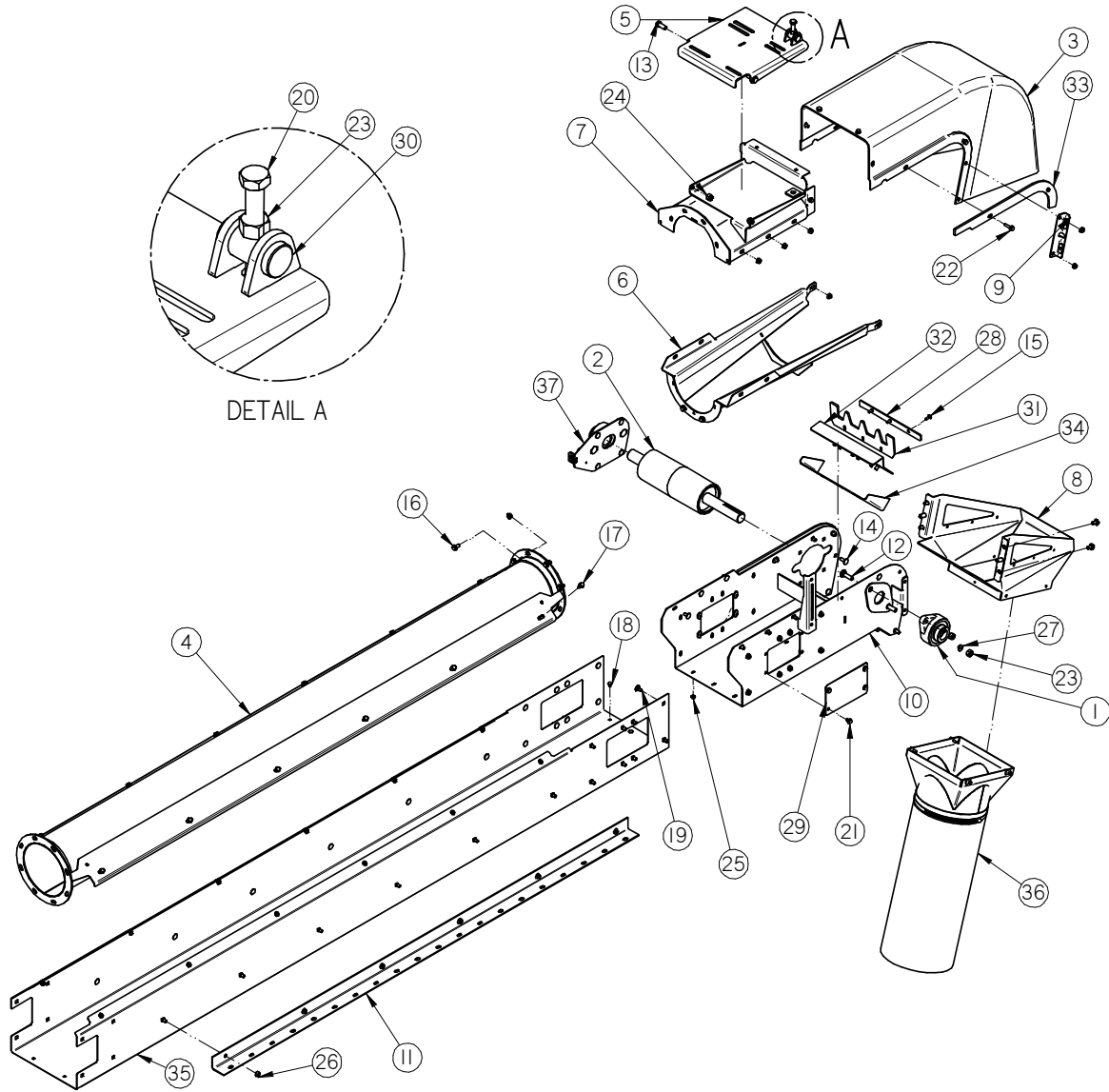
PORTABLE LPX TREATER

**ASSEMBLY HEAD SECTION TS25 17 FT (13-08-0798 REV A1)**

PART #		13-08-0796 REV A1		
Item #	Part #	Description	Qty	See Page
35	106986	PLT HD REINF TS25	2	
36	106988	RBBR SEAL HD TS25	1	
37	13-05-0529	ASSY FRAME HD TS2532 DD W/RIVETNUTS	1	
38	13-08-0746	ASSY TRACKING PLT HD	1	34

PORTABLE LPX TREATER

**ASSEMBLY HEAD SECTION TS25 20 FT (13-08-0782 REV A2)**



PORTABLE LPX TREATER

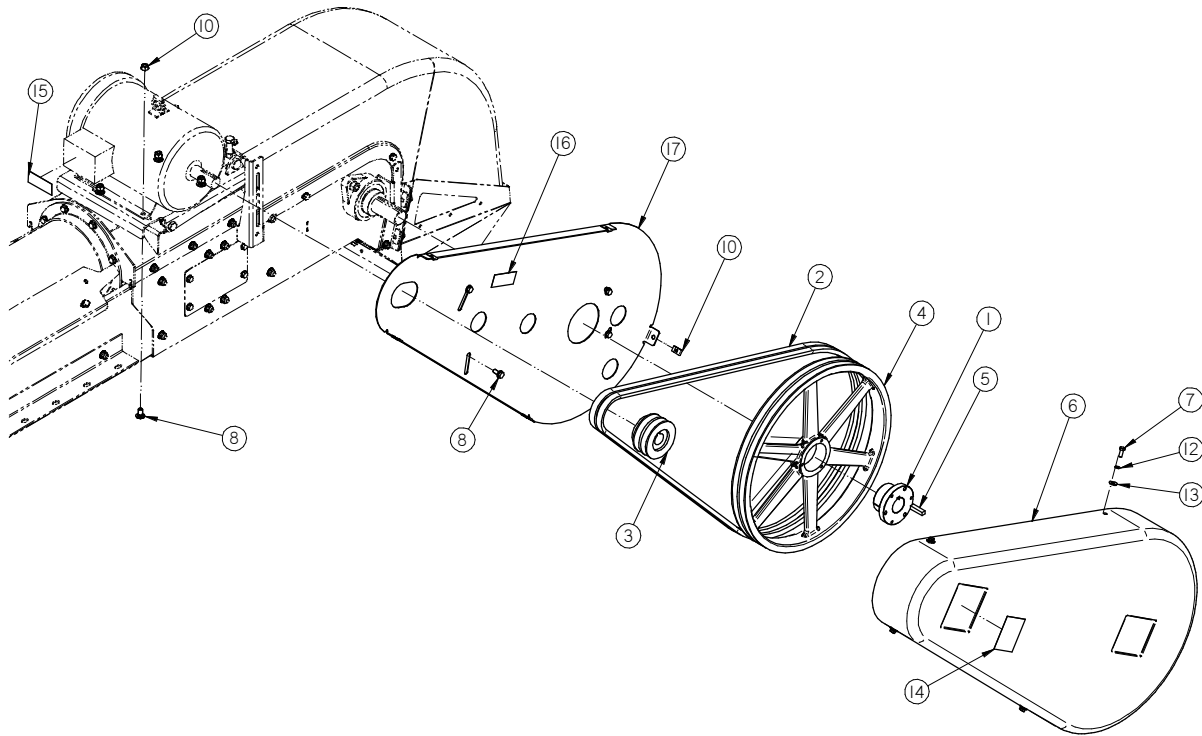
**ASSEMBLY HEAD SECTION TS25 20 FT (13-08-0782 REV A2)**

PART #		13-08-0782 REV A A2		
Item #	Part #	Description	Qty	See Page
1	01-03-0077	BRG FLG MNT 1.500ID 2BOLT ECNTRC	1	
2	01-08-0132	PULLEY HEAD 4.50DIA X 11.50W LG BRG	1	
3	05-06-0131	CVR HD TS25 DD	1	
4	05-08-0416	WDMT TUBE 8IN X 95.14IN	1	
5	05-08-0549	WDMT MTR MNT PLT LG	1	
6	05-08-0564	WDMT HD TRANS TS25	1	
7	05-08-0565	WDMT HD CVR TS25	1	
8	05-08-0567	WDMT DSCHG HD SPOUT TS25	1	
9	05-08-0568	WDMT DSCHG HD MNT PLT	2	
10	05-08-0709	WDMT HD TS25 LG BRG	1	
11	05-10-4028	TRANSPORT STOP PLT EXT MNT	2	
12	06-01-0026	BOLT CRG .500-13 X 1.75 ZP GR5	2	
13	06-01-0080	BOLT .500-13 X 1.25 ZP GR5	2	
14	06-01-0115	BOLT CRG .375-16 X 1.00 ZP GR5	4	
15	06-01-0122	BOLT CRG .250-20 X .750 ZP GR5	3	
16	06-01-0124	BOLT FLG .375-16 X .750 ZP GR5	10	
17	06-01-0138	BOLT FLG .3125-18 X .750 ZP GR5	16	
18	06-01-0150	BOLT CRG .250-20 X .500 ZP	6	
19	06-01-0153	BOLT CRG .375-16X.750 ZP SHORT NECK	42	
20	06-01-0221	BOLT .500-13 X 4.50 ZP GR5 FTH	1	
21	06-01-0261	BOLT FLG .3125-18 X .500 ZP GR5	8	
22	06-01-0343	BOLT FLG .3125-18 X 1.25 ZP GR5	4	
23	06-02-0004	NUT FULL .500-13 ZP GR5	3	
24	06-03-0004	NUT NYL LOCK .500-13 ZP GR5	2	
25	06-03-0013	NUT LOCK FLG .250-20 ZP GR5	9	
26	06-03-0014	NUT LOCK FLG .375-16 ZP GR5	52	
27	06-04-0004	WSHR LOCK SPLT .500 ZP	2	
28	103B39	PLT SCRAPER HLDR 12IN CNVR	1	
29	103B9A	PLT SPLICE COVER	2	
30	10414A	PIN MTR PIVOT	1	
31	104259	RBBR SCRAPER 12IN FILL	1	
32	104C11	PLT BAFFLE MNT	1	
33	106986	PLT HD REINF TS25	2	
34	106988	RBBR SEAL HD TS25	1	
35	13-05-0508	ASSY FRAME HD TS25 DD W/RIVETNUTS	1	
36	13-05-0697	ASSY 10"ID FLEX SPOUT	1	36
37	13-08-0746	ASSY TRACKING PLT HD	1	34



PORTABLE LPX TREATER

**ASSEMBLY DRIVE KIT T5HP TS25 (13-08-0783 REV A0)**





PORTABLE LPX TREATER

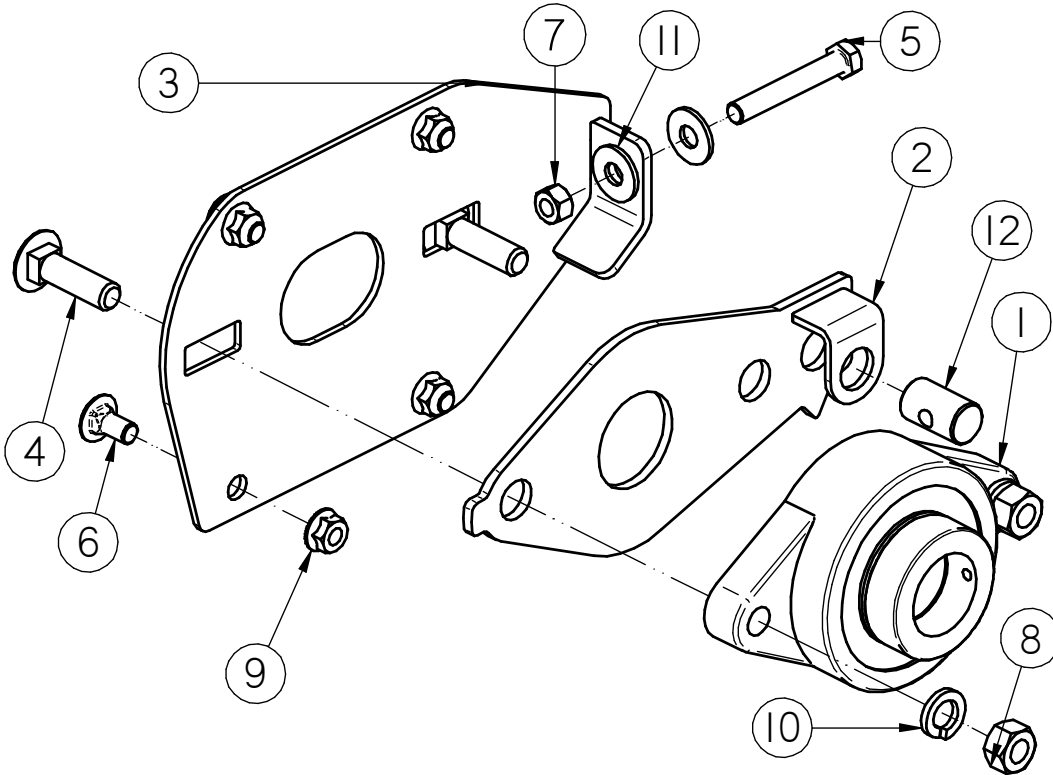
**ASSEMBLY DRIVE KIT T5HP TS25 (13-08-0783 REV A0)**

PART #		13-08-0783 REV A A0		
Item #	Part #	Description	Qty	See Page
1	01-02-0143	BUSH 1.50IN BORE TYPE SK	1	
2	01-08-0121	BELT BX88	2	
3	01-08-0122	SHV 2BK36 X 1.125 FHSB BORE	1	
4	01-08-0147	SHV 2B18.4-SK	1	
5	01-10-0015	KEY .375 X 1.50 CS	1	
6	05-06-0127	CVR BELT DD	1	
7	06-01-0006	BOLT .250-20 X .750 ZP GR5	5	
8	06-01-0138	BOLT FLG .3125-18 X .750 ZP GR5	4	
9	06-01-0153	BOLT CRG .375-16X.750 ZP SHORT NECK	4	
10	06-02-0047	NUT U-CLIP .250-20	5	
11	06-03-0014	NUT LOCK FLG .375-16 ZP GR5	4	
12	06-04-0001	WSHR LOCK SPLT .250 ZP	5	
13	06-05-0001	WSHR FLAT .250 ZP	5	
14	09-02-0009	ATWK LBL WARNING ROTATING PARTS	1	
15	09-02-0010	ATWK LBL DANGER ELECTROCUTION	1	
16	09-02-0012	ATWK LBL DANGER MISSING SHIELD	1	
17	104869	BACKPLATE BELT COVER	1	

MOTOR #	MOTOR DESCRIPTION	VOLTAGE
01-01-0107	MTR 5HP 1750RPM 184T TEFC 1PH	240V / 1PH
01-01-0143	MTR 5HP 1760RPM 184T TEFC 3PH 575V	575V / 3PH
01-01-0151	MTR EE 5HP 1750RPM 184T TEFC 3PH	240V / 480V / 3PH
01-01-0209	MTR 5HP 1425RPM 184T 50HZ 131454	380V / 3PH

PORTABLE LPX TREATER

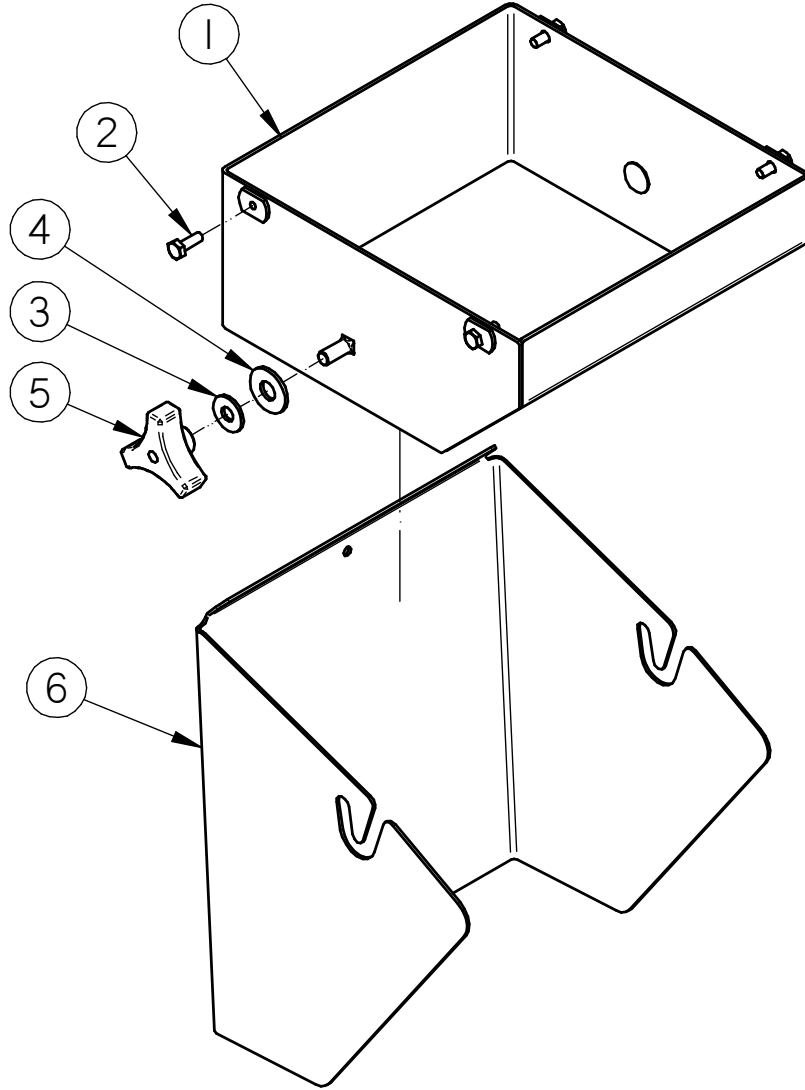
**ASSEMBLY TRACKING PLATE HEAD (13-08-0746 REV A0)**



PART #		13-08-0746 REV A0		
Item #	Part #	Description	Qty	See Page
1	01-03-0077	BRG FLG MNT 1.500ID 2BOLT ECNTRC	1	
2	05-08-0706	WDMT TRACKING PIVOT LG BRG	1	
3	05-08-0708	WDMT PLT TRACKING HD LG BRG	1	
4	06-01-0026	BOLT CRG .500-13 X 1.75 ZP GR5	2	
5	06-01-0071	BOLT .375-16 X 2.50 ZP GR5	1	
6	06-01-0153	BOLT CRG .375-16X.750 ZP SHORT NECK	4	
7	06-02-0003	NUT FULL .375-16 ZP GR5	1	
8	06-02-0004	NUT FULL .500-13 ZP GR5	2	
9	06-03-0014	NUT LOCK FLG .375-16 ZP GR5	4	
10	06-04-0004	WSHR LOCK SPLT .500 ZP	2	
11	06-05-0004	WSHR FLAT .375 ZP	2	
12	104079	PIN TRACKING PIVOT	1	

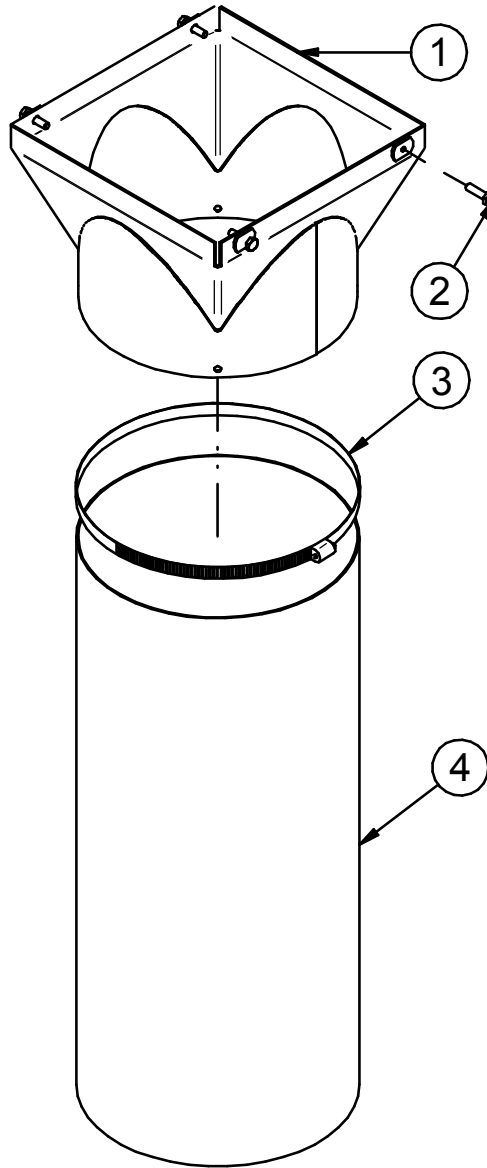
PORTABLE LPX TREATER

**ASSEMBLY ADJUSTABLE SPOUT TS CONVEYORS (13-08-0705 REV A0)**



PART #		13-08-0705 REV A0		
Item #	Part #	Description	Qty	See Page
1	05-08-0661	WDMT SPOUT MNT	1	
2	06-01-0006	BOLT .250-20 X .750 ZP GR5	4	
3	06-05-0004	WSHR FLAT .375 ZP	2	
4	06-05-0005	WSHR FLAT .500 ZP	2	
5	06-09-0001	KNOB 3PRONG 1.25IN	2	
6	105429	PLT ADJ SPOUT	1	

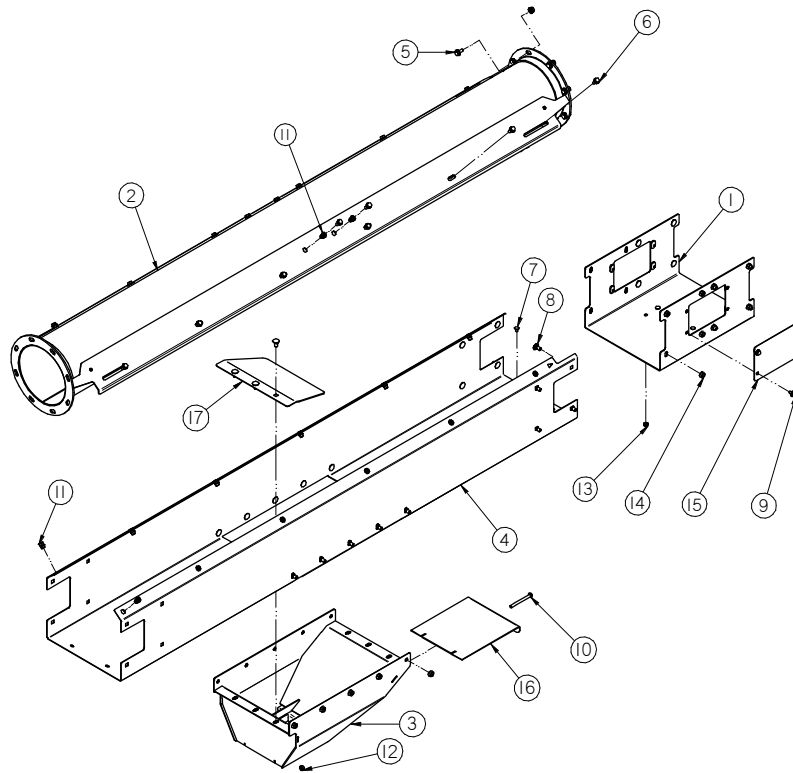
PORTABLE LPX TREATER  
**ASSEMBLY 10 INCH FLEX SPOUT (13-05-0697 REV A0)**



PART #		13-05-0697 REV A0		
Item #	Part #	Description	Qty	See Page
1	05-03-1567	WDMT CNVR SPOUT TS3500	1	
2	06-01-0007	BOLT .250-20 X 1.00 ZP GR5	4	
3	06-07-0027	CLMP HOSE 9.375 TO 12.25 X 9/16 SS	1	
4	103D92	CNVR DSCHG SPOUT EXT 10ID	1	

PORTABLE LPX TREATER

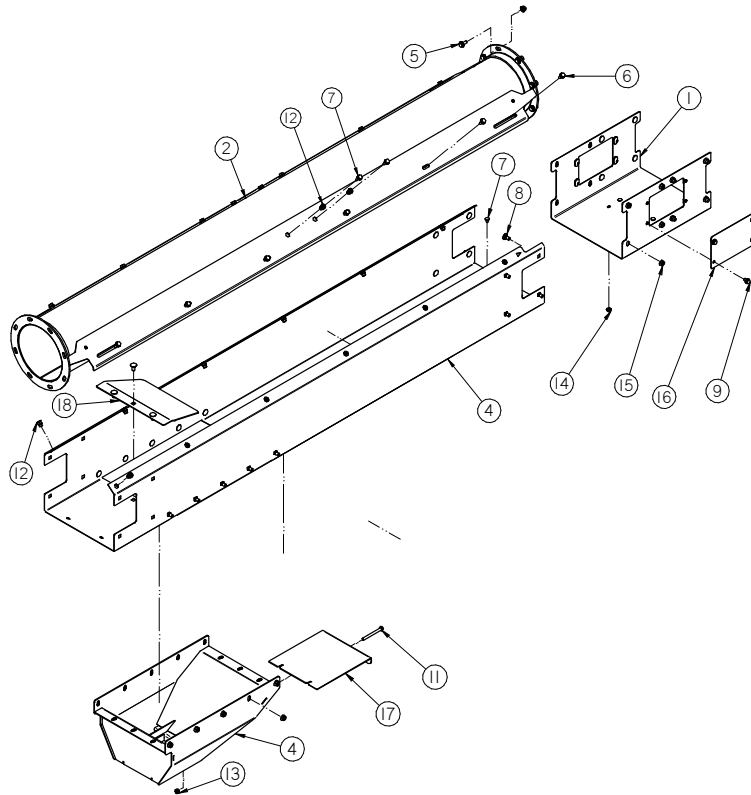
**ASSEMBLY INLET EXT CLEANOUT (13-08-0668 REV A0)**



PART #		13-08-0668 REV A0		
Item #	Part #	Description	Qty	See Page
1	05-10-4524	WDMT SPLICE 12IN	1	
2	05-08-0461	WDMT TUBE 8IN X 84.86IN	1	
3	05-08-0610	WDMT CLEAN OUT TS25	1	
4	05-10-4524	FRAME INLET SECT CLEAN OUT	1	
5	06-01-0124	BOLT FLG .375-16 X .750 ZP GR5	8	
6	06-01-0138	BOLT FLG .3125-18 X .750 ZP GR5	16	
7	06-01-0150	BOLT CRG .250-20 X .500 ZP	4	
8	06-01-0153	BOLT CRG .375-16X.750 ZP SHORT NECK	32	
9	06-01-0261	BOLT FLG .3125-18 X .500 ZP GR5	8	
10	06-01-0311	BOLT .313-18 X 3.25 ZP GR5	1	
11	06-02-0092	NUT RIVET .312-18 ZP	16	
12	06-03-0002	NUT NYL LOCK .313-18 ZP GR5	1	
13	06-03-0013	NUT LOCK FLG .250-20 ZP GR5	4	
14	06-03-0014	NUT LOCK FLG .375-16 ZP GR5	40	
15	103B9A	PLT SPLICE COVER	2	
16	1050CF	PLT DOOR CLEAN OUT TS25	1	
17	1050E8	PLT BELT GUIDE	1	

PORTABLE LPX TREATER

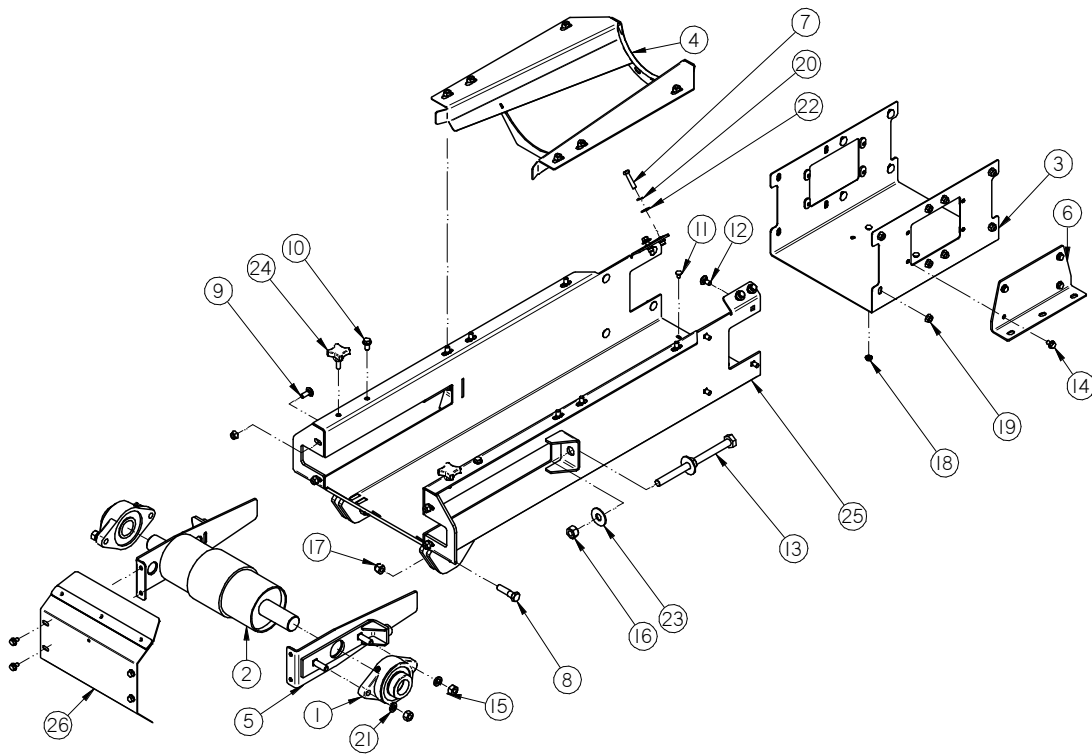
**ASSEMBLY INLET CLEANOUT TS25 PORTABLE (13-08-0707 REV A0)**



PART #		13-08-0707 REV A0		
Item #	Part #	Description	Qty	See Page
1	05-08-0419	WDMT SPLICE 12IN	1	
2	05-08-0461	WDMT TUBE 8IN X 84.86IN	1	
3	05-08-0610	WDMT CLEAN OUT TS25	1	
4	05-10-4676	FRAME INLET SEC CLNOUT TS25 PORT	1	
5	06-01-0124	BOLT FLG .375-16 X .750 ZP GR5	8	
6	06-01-0138	BOLT FLG .3125-18 X .750 ZP GR5	16	
7	06-01-0150	BOLT CRG .250-20 X .500 ZP	4	
8	06-01-0153	BOLT CRG .375-16X.750 ZP SHORT NECK	32	
9	06-01-0261	BOLT FLG .3125-18 X .500 ZP GR5	8	
10	06-01-0311	BOLT .313-18 X 3.25 ZP GR5	1	
11	06-02-0092	NUT RIVET .312-18 ZP	16	
12	06-03-0002	NUT NYL LOCK .313-18 ZP GR5	1	
13	06-03-0013	NUT LOCK FLG .250-20 ZP GR5	4	
14	06-03-0014	NUT LOCK FLG .375-16 ZP GR5	40	
15	103B9A	PLT SPLICE COVER	2	
16	1050CF	PLT DOOR CLEAN OUT TS25	1	
17	1050E8	PLT BELT GUIDE	1	

PORTABLE LPX TREATER

**ASSEMBLY INLET SECTION TS25 LARGE BEARING (13-08-0747 REV A0)**



PORTABLE LPX TREATER

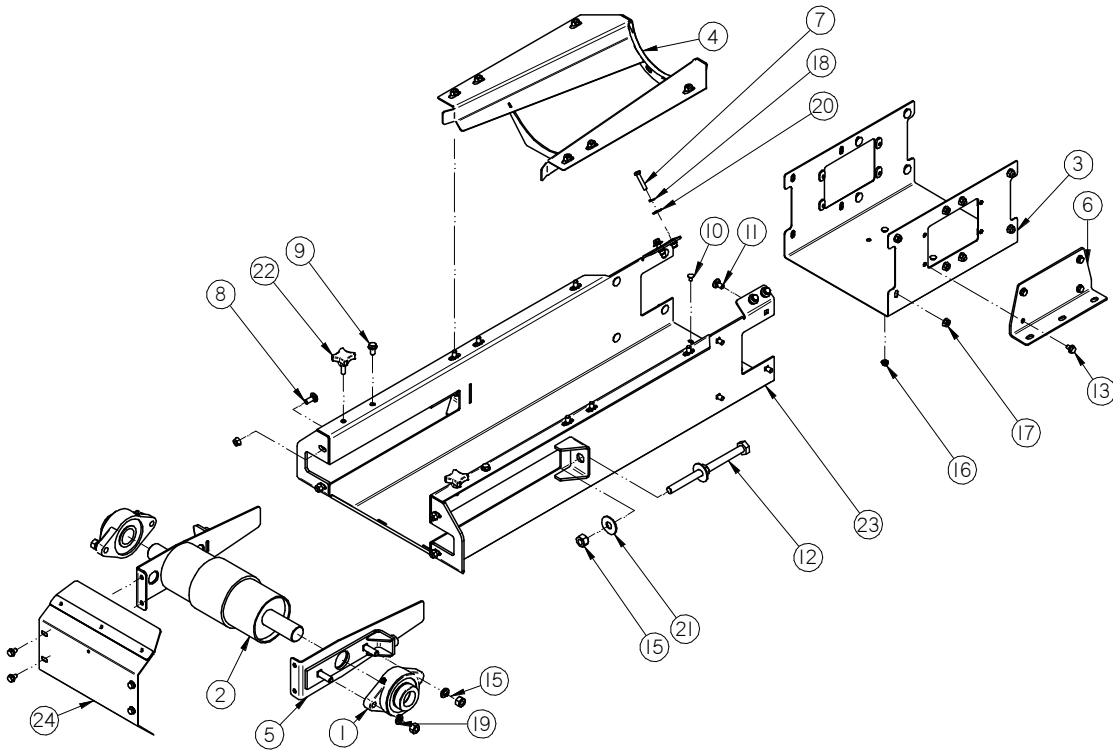
**ASSEMBLY INLET SECTION TS25 LARGE BEARING (13-08-0747 REV A0)**

PART #		13-08-0747 REV A0		
Item #	Part #	Description	Qty	See Page
1	01-03-0077	BRG FLG MNT 1.500ID 2BOLT ECNTRC	2	
2	01-08-0135	PULLEY TAIL 4.50DIA X 11.50W LG BRG	1	
3	05-08-0419	WDMT SPLICE 12IN	1	
4	05-08-0569	WDMT TAIL TRANS TS25	1	
5	05-08-0705	WDMT TAK-UP PLT LG BRG	2	
6	05-10-04339	PLT STOP MNT	2	
7	06-01-0013	BOLT .313-18 X 1.50 ZP GR5	4	
8	06-01-0027	BOLT .500-13 X 2.00 ZP GR5	2	
9	06-01-0115	BOLT CRG .375-16 X 1.00 ZP GR5	4	
10	06-01-0124	BOLT FLG .375-16 X .750 ZP GR5	2	
11	06-01-0150	BOLT CRG .250-20 X .500 ZP	4	
12	06-01-0153	BOLT CRG .375-16X.750 ZP SHORT NECK	22	
13	06-01-0249	BOLT .625-11 X 9.00 ZP GR5 FTH	2	
14	06-01-0261	BOLT FLG .3125-18 X .500 ZP GR5	12	
15	06-02-0004	NUT FULL .500-13 ZP GR5	4	
16	06-02-0005	NUT FULL .625-11 ZP GR5	4	
17	06-03-0004	NUT NYL LOCK .500-13 ZP GR5	2	
18	06-03-0013	NUT LOCK FLG .250-20 ZP GR5	4	
19	06-03-0014	NUT LOCK FLG .375-16 ZP GR5	28	
20	06-04-0002	WSHR LOCK SPLT .313 ZP	4	
21	06-04-0004	WSHR LOCK SPLT .500 ZP	4	
22	06-05-0003	WSHR FLAT .313 ZP	4	
23	06-05-0006	WSHR FLAT .625 ZP	4	
24	06-09-0066	KNOB .375 -16 X 1. 4 LUG PLASTIC	2	
25	13-05-0641	ASSY FRM W/RIVETNUTS TS25 LG BRG	1	
26	13-08-0722	ASSY BAFFLE W/SEAL TS25	1	



PORTABLE LPX TREATER

**ASSEMBLY INLET SECTION LPV (13-08-0790 REV A0)**



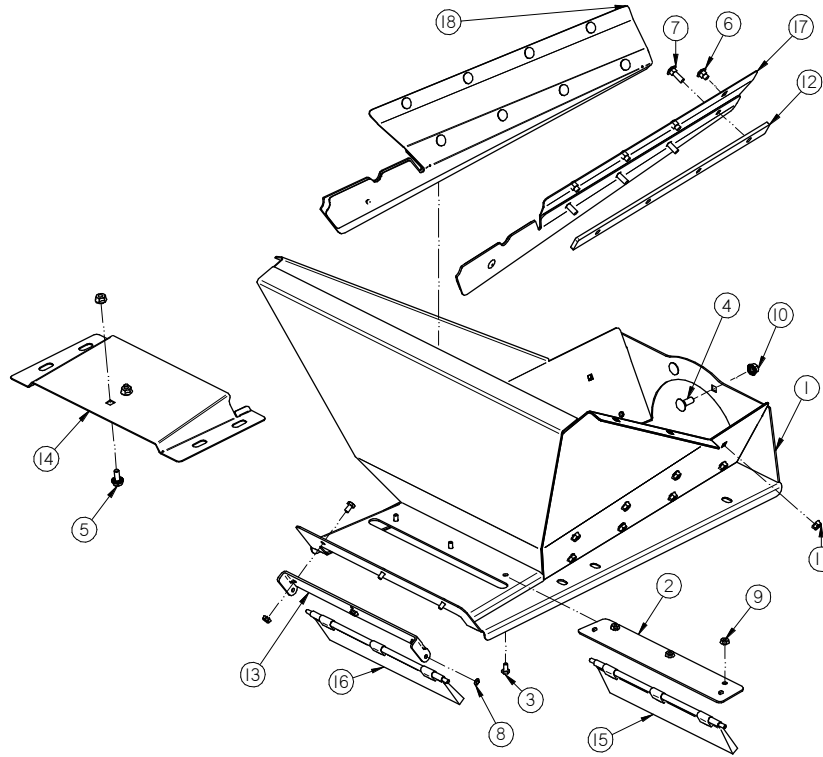
PORTABLE LPX TREATER

**ASSEMBLY INLET SECTION LPV (13-08-0790 REV A0)**

PART #		13-08-0790 REV A0		
Item #	Part #	Description	Qty	See Page
1	01-03-0077	BRG FLG MNT 1.500ID 2BOLT ECNTRC	2	
2	01-08-0135	PULLEY TAIL 4.50DIA X 11.50W LG BRG	1	
3	05-08-0419	WDMT SPLICE 12IN	1	
4	05-08-0569	WDMT TAIL TRANS TS25	1	
5	05-08-0705	WDMT TAK-UP PLT LG BRG	2	
6	05-10-4339	PLT STOP MNT	2	
7	06-01-0013	BOLT .313-18 X 1.50 ZP GR5	4	
8	06-01-0115	BOLT CRG .375-16 X 1.00 ZP GR5	4	
9	06-01-0124	BOLT FLG .375-16 X .750 ZP GR5	2	
10	06-01-0150	BOLT CRG .250-20 X .500 ZP	4	
11	06-01-0153	BOLT CRG .375-16X.750 ZP SHORT NECK	22	
12	06-01-0249	BOLT .625-11 X 9.00 ZP GR5 FTH	2	
13	06-01-0261	BOLT FLG .3125-18 X .500 ZP GR5	12	
14	06-02-0004	NUT FULL .500-13 ZP GR5	4	
15	06-02-0005	NUT FULL .625-11 ZP GR5	4	
16	06-03-0013	NUT LOCK FLG .250-20 ZP GR5	4	
17	06-03-0014	NUT LOCK FLG .375-16 ZP GR5	28	
18	06-04-0002	WSHR LOCK SPLT .313 ZP	4	
19	06-04-0004	WSHR LOCK SPLT .500 ZP	4	
20	06-05-0003	WSHR FLAT .313 ZP	4	
21	06-05-0006	WSHR FLAT .625 ZP	4	
22	06-09-0066	KNOB .375 -16 X 1. 4 LUG PLASTIC	2	
23	13-05-0694	ASSY INLET W/RIVETNUTS TS25 PORT	1	
24	13-08-0722	ASSY BAFFLE W/SEAL TS25	1	

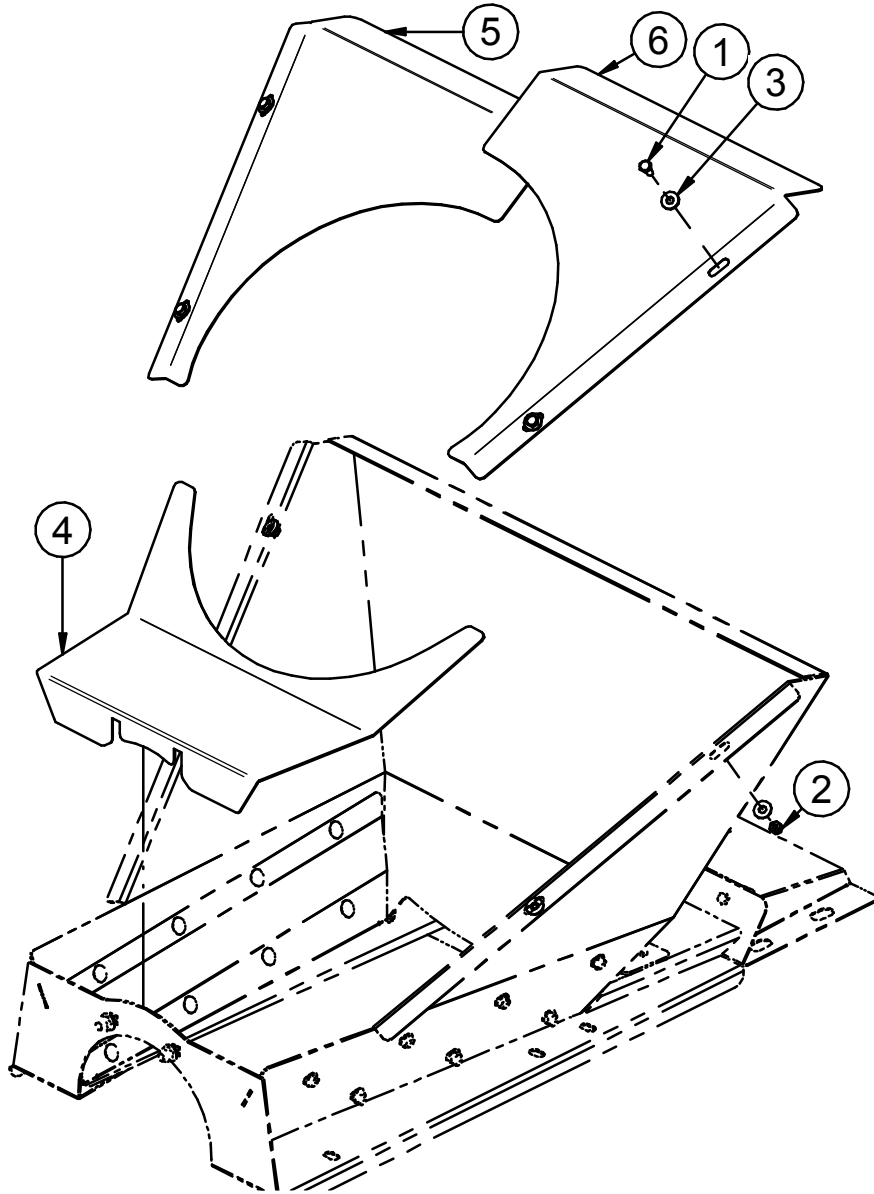
PORTABLE LPX TREATER

**ASSEMBLY LARGE RIDGID INLET HOPPER TS25 (13-08-0540 REV C0)**



PART #		13-08-0540 REV C0		
Item #	Part #	Description	Qty	See Page
1	05-08-0477	WDMT LG INLET 8IN RND	1	
2	05-08-0536	WDMT PIVOT BRSH PLT TS25	1	
3	06-01-0004	BOLT .250-20 X .500 ZP GR5	6	
4	06-01-0115	BOLT CRG .375-16 X 1.00 ZP GR5	2	
5	06-01-0129	BOLT CRG .313-18 X .500 ZP GR5	8	
6	06-01-0223	BOLT CRG .313-18 X 1.00 ZP GR5	8	
7	06-02-0100	NUT PUSH 1/4 UNTHREADED SHAFT	2	
8	06-03-0013	NUT LOCK FLG .250-20 ZP GR5	6	
9	06-03-0014	NUT LOCK FLG .375-16 ZP GR5	2	
10	06-03-0019	NUT LOCK FLG .313-18 ZP GR5	16	
11	103D17	PLT SKIRT SPACER	2	
12	10472A	PLT BRUSH MNT	1	
13	105608	COVER CLN\OUT	1	
14	13-05-0478	ASSY BRUSH W\CLIPS 11.25	1	47
15	13-05-0479	ASSY BRUSH W\CLIPS 11.88	1	47
16	13-05-0582	ASSY RH SKIRT RIGID TS25	1	
17	13-05-0583	ASSY LH SKIRT RIGID TS25	1	

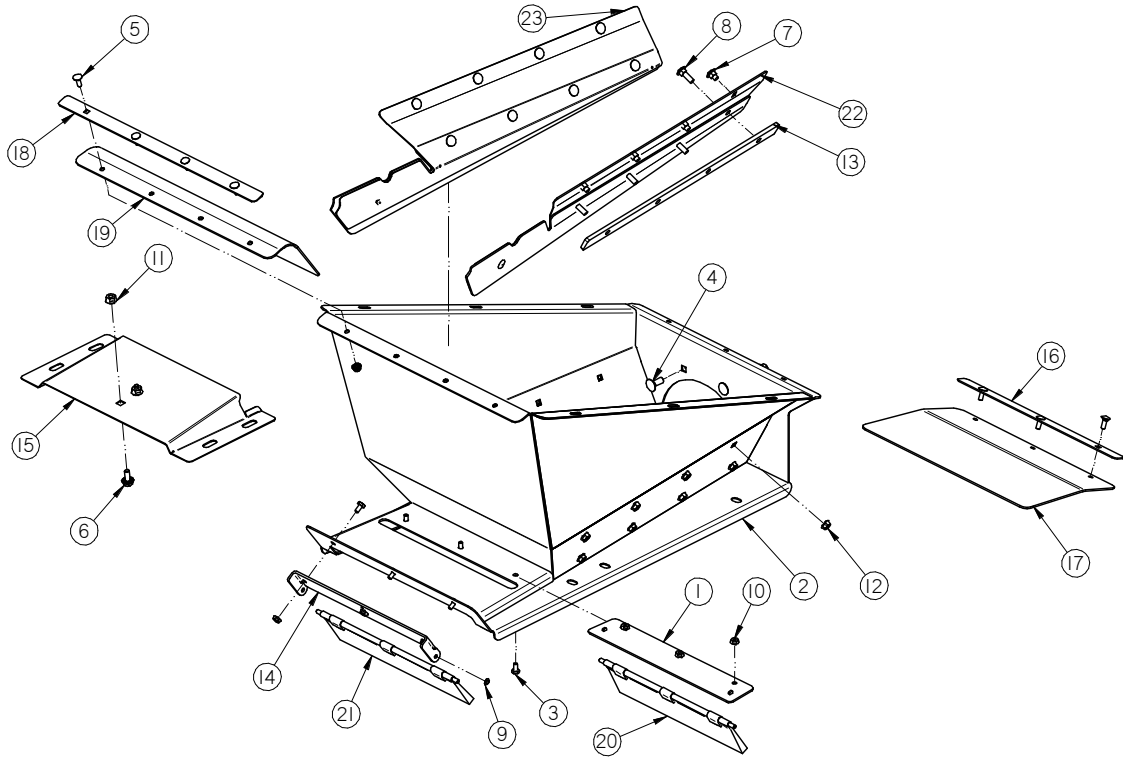
PORTABLE LPX TREATER  
**KIT SEAL INLET LPV (13-05-0734 REV A0 0**



PART #		13-05-0783 REV A0		
Item #	Part #	Description	Qty	See Page
1	06-01-0006	BOLT .250-20 X .750 ZP GR5	4	
2	06-03-0001	NUT NYL LOCK .250-20 ZP GR5	4	
3	06-05-0001	WSHR FLAT .250 ZP	8	
4	1053D5	PLT LG INLET DEFLECTOR	1	
5	1058E0	PLT RH INLET CVR PORT	1	
6	1058E1	PLT LH INLET CVR PORT	1	

PORTABLE LPX TREATER

**ASSEMBLY INLET HOPPER TS25 LPV PORTABLE (13-08-0736 REV A0)**



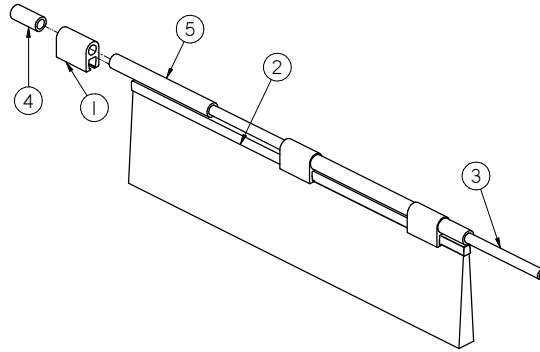
PORTABLE LPX TREATER

**ASSEMBLY INLET HOPPER TS25 LPV PORTABLE (13-08-0736 REV A0)**

PART #		13-08-0736 REV A1		
Item #	Part #	Description	Qty	See Page
1	05-08-0536	WDMT PIVOT BRSH PLT TS25	1	
2	05-08-0698	WDMT INLET HOP TS25 LPV PORT	1	
3	06-01-0004	BOLT .250-20 X .500 ZP GR5	6	
4	06-01-0115	BOLT CRG .375-16 X 1.00 ZP GR5	2	
5	06-01-0122	BOLT CRG .250-20 X .750 ZP GR5	7	
6	06-01-0124	BOLT FLG .375-16 X .750 ZP GR5	2	
7	06-01-0129	BOLT CRG .313-18 X .500 ZP GR5	8	
8	06-01-0223	BOLT CRG .313-18 X 1.00 ZP GR5	8	
9	06-02-0100	NUT PUSH 1/4 UNTHREADED SHAFT	2	
10	06-03-0013	NUT LOCK FLG .250-20 ZP GR5	13	
11	06-03-0014	NUT LOCK FLG .375-16 ZP GR5	4	
12	06-03-0019	NUT LOCK FLG .313-18 ZP GR5	16	
13	103D17	PLT SKIRT SPACER	2	
14	10472A	PLT BRUSH MNT	1	
15	105608	COVER CLN\OUT	1	
16	105770	PLT SEAL MNT	1	
17	105771	SEAL INLET RBBR	1	
18	105772	PLT SEAL MNT	1	
19	105773	SEAL INLET RBBR	1	
20	13-05-0478	ASSY BRUSH W\CLIPS 11.25	1	47
21	13-05-0479	ASSY BRUSH W\CLIPS 11.88	1	47
22	13-05-0582	ASSY RH SKIRT RIGID TS25	1	
23	13-05-0583	ASSY LH SKIRT RIGID TS25	1	

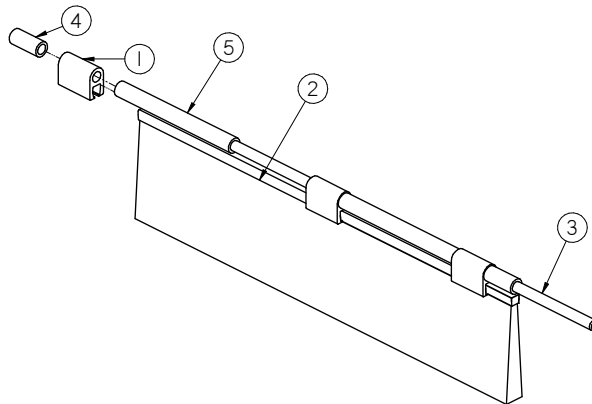
PORTABLE LPX TREATER

**ASSEMBLY BRUSH WITH LIPS 11.25 INCHES (13-05-0478 REV B0)**



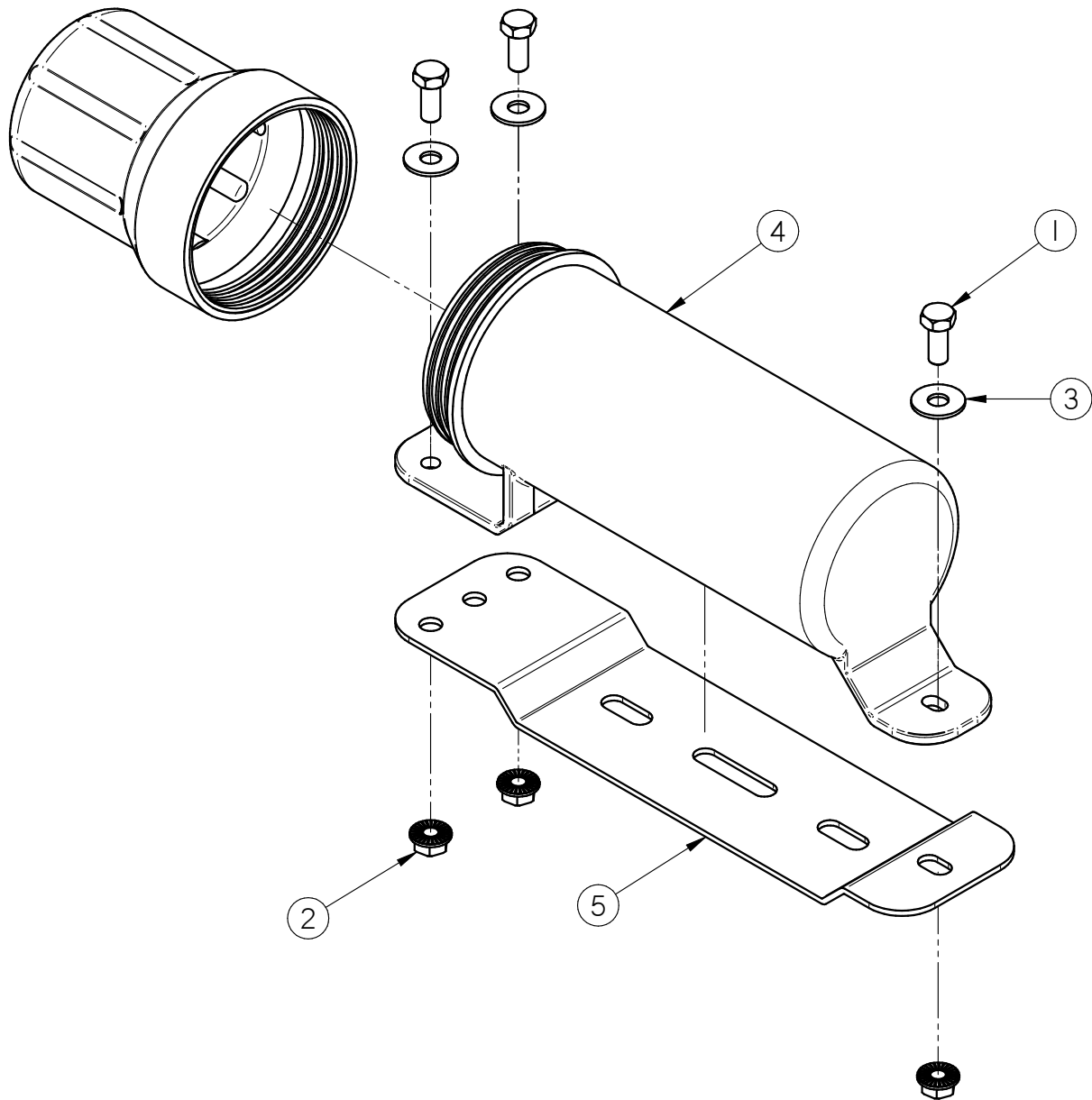
PART #		13-05-0478 REV B0		
Item #	Part #	Description	Qty	See Page
1	06-09-0117	CLIP BRUSH ATTACH ALUM	3	
2	06-10-0065	BRUSH SEAL 11.25 X 2.76	1	
3	104729	ROD BRUSH PIVOT	1	
4	104864	SPACER .375 X .843 NYL TBG	2	
5	104865	SPACER .375 X 3.312 NYL TBG	2	

**ASSEMBLY BRUSH WITH LIPS 11.88 INCHES (13-05-0479 REV B0)**



PART #		13-05-0479 REV B0		
Item #	Part #	Description	Qty	See Page
1	06-09-0117	CLIP BRUSH ATTACH ALUM	3	
2	06-10-0066	BRUSH SEAL 11.88 X 2.76	1	
3	104773	ROD BRUSH PIVOT	1	
4	104864	SPACER .375 X .843 NYL TBG	2	
5	104866	SPACER .375 X 3.63 NYL TBG	2	

PORTABLE LPX TREATER  
**MANUAL TUBE ASSEMBLY (13-05-0332 REV A)**

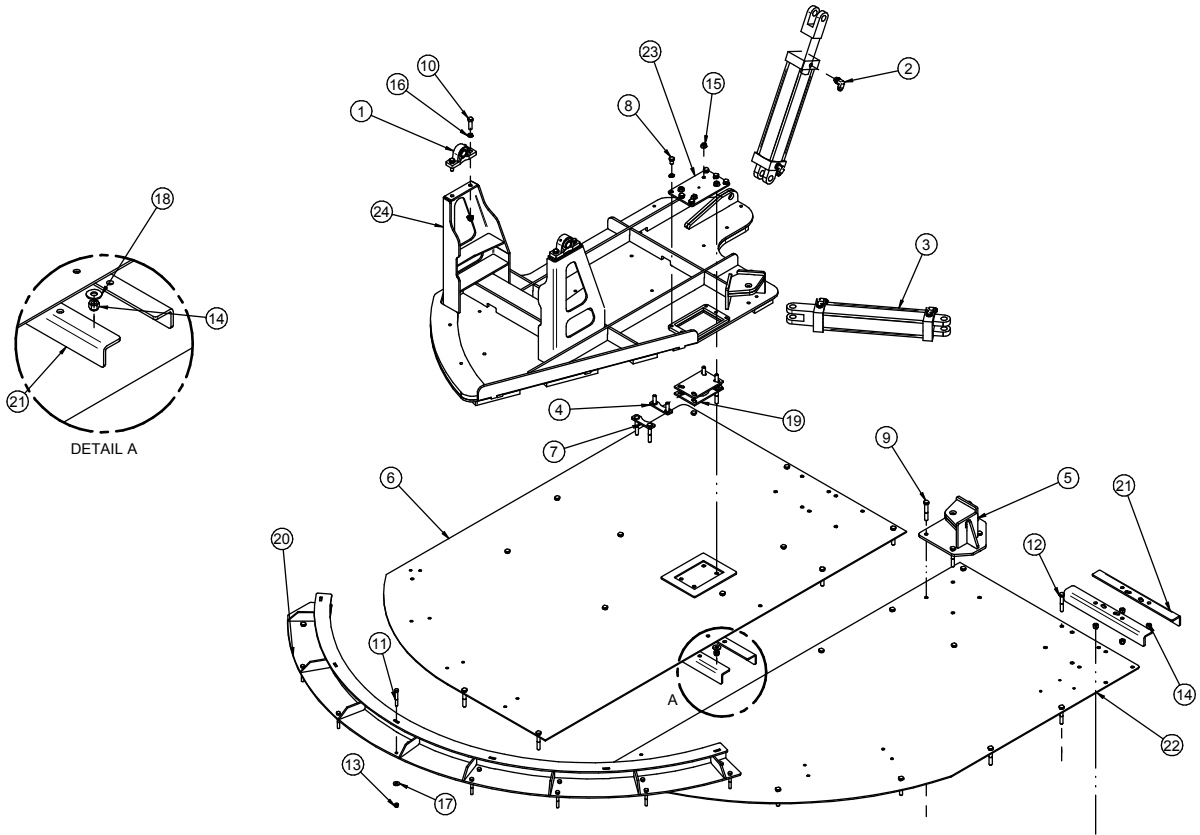


Item #	Part #	Description	Qty
1	06-01-0010	BOLT .313-18 X 0.75 ZP GR5	3
2	06-03-0019	NUT, FLG .3125-18 UNC ZP GRADE 5	3
3	06-05-0011	WASHER, .3125 FLAT 18-8 SS	3
4	08-07-0050	HOLDER MANUAL 3.25 DIA	1
5	103980	PLT MANUAL MT	1



PORTABLE LPX TREATER

**ASSEMBLY LV PORTABLE PIVOT (13-05-0594 REV B5)**

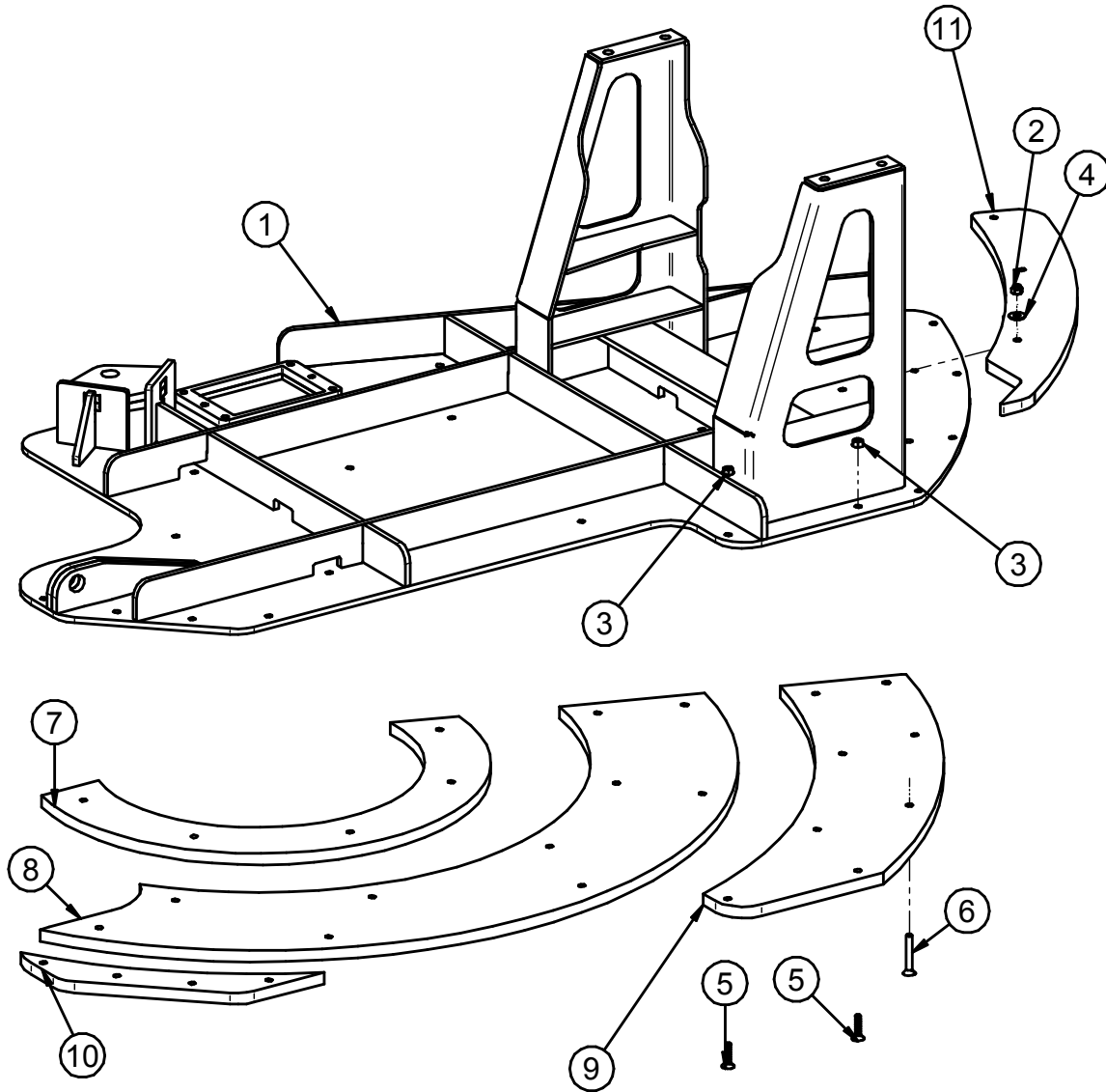


PORTABLE LPX TREATER

**ASSEMBLY LV PORTABLE PIVOT (13-05-0594 REV B5)**

PART #		13-05-0594 REV B5		
Item #	Part #	Description	Qty	See Page
1	01-03-0060	BRG PLW SEALED 1.00ID STSC	2	
2	02-06-0058	FTTG HYD 90 DEG 8MJ-8MOR	4	
3	03-17-0133	CYL HYD 14IN STRK 3.0IN ID	2	
4	05-03-1706	WDMT BOLT HLDR	2	
5	05-03-1708	WDMT CYL MNT LPV PORT	1	
6	05-03-1709	WDMT DECK PLT TURNTABLE	1	
7	05-03-1710	WDMT BOLT HLDR LG	2	
8	06-01-0024	BOLT .500-13 X .750 ZP GR5	6	
9	06-01-0029	BOLT .500-13 X 3.25 ZP GR5	4	
10	06-01-0054	BOLT .500-13 X 1.75 ZP GR5	4	
11	06-01-0116	BOLT .375-16 X 2.75 ZP GR5	16	
12	06-01-0252	BOLT .500-13 X 3.00 ZP GR5	24	
13	06-03-0003	NUT NYL LOCK .375-16 ZP GR5	16	
14	06-03-0004	NUT NYL LOCK .500-13 ZP GR5	32	
15	06-03-0015	NUT LOCK FLG .500-13 ZP GR5	8	
16	06-04-0004	WSHR LOCK SPLT .500 ZP	10	
17	06-05-0004	WSHR FLAT .375 ZP	16	
18	06-05-0005	WSHR FLAT .500 ZP	6	
19	06-08-0007	TURNTABLE 1500LB	1	
20	105516	WDMT PIVOT RETAINER	1	
21	105726	PIVOT SUPPT BRKT	4	
22	105752	PLT LPV PORT PIVOT	1	
23	10575A	PLT PIVOT MNT	1	
24	13-05-0586	ASSY CNVR PIVOT	1	51

PORTABLE LPX TREATER  
**ASSEMBLY CONVEYOR PIVOT (13-05-0586 REV C0)**

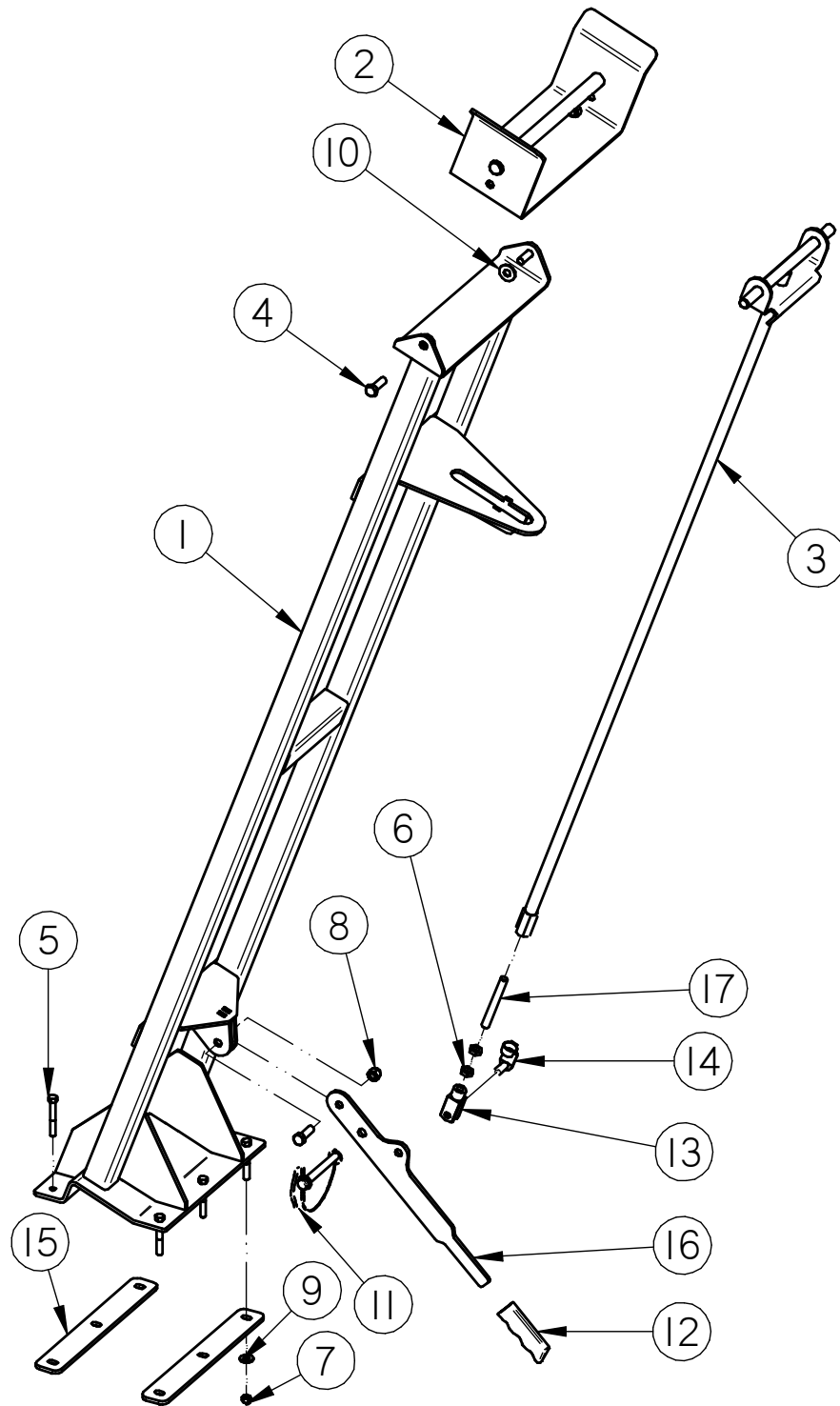


PORTABLE LPX TREATER

**ASSEMBLY CONVEYOR PIVOT (13-05-0586 REV C0)**

PART #		13-05-0586 REV C C0		
Item #				
1	05-03-1691	WDMT PIVOT PLT	1	
2	06-03-0003	NUT NYL LOCK .375-16 ZP GR5	3	
3	06-03-0014	NUT LOCK FLG .375-16 ZP GR5	24	
4	06-05-0004	WSHR FLAT .375 ZP	3	
5	06-06-0070	SCRW MACH .375-16 X 1.50 SH FLHD BO	24	
6	06-06-0107	SCRW MACH .375-16 X 2.50 SH FLHD BO	3	
7	1054FC	PIVOT PLT BTM SLIDE 1	1	
8	1054FD	PIVOT PLT BTM SLIDE 2	1	
9	1054FE	PIVOT PLT BTM SLIDE 3	1	
10	1055AC	PIVOT PLT BTM SLIDE 4	1	
11	1059D5	PIVOT PLT TOP SLIDE	1	

**ASSEMBLY CONVEYOR RESE WITH LOCK (13-05-0622 REV A1)**



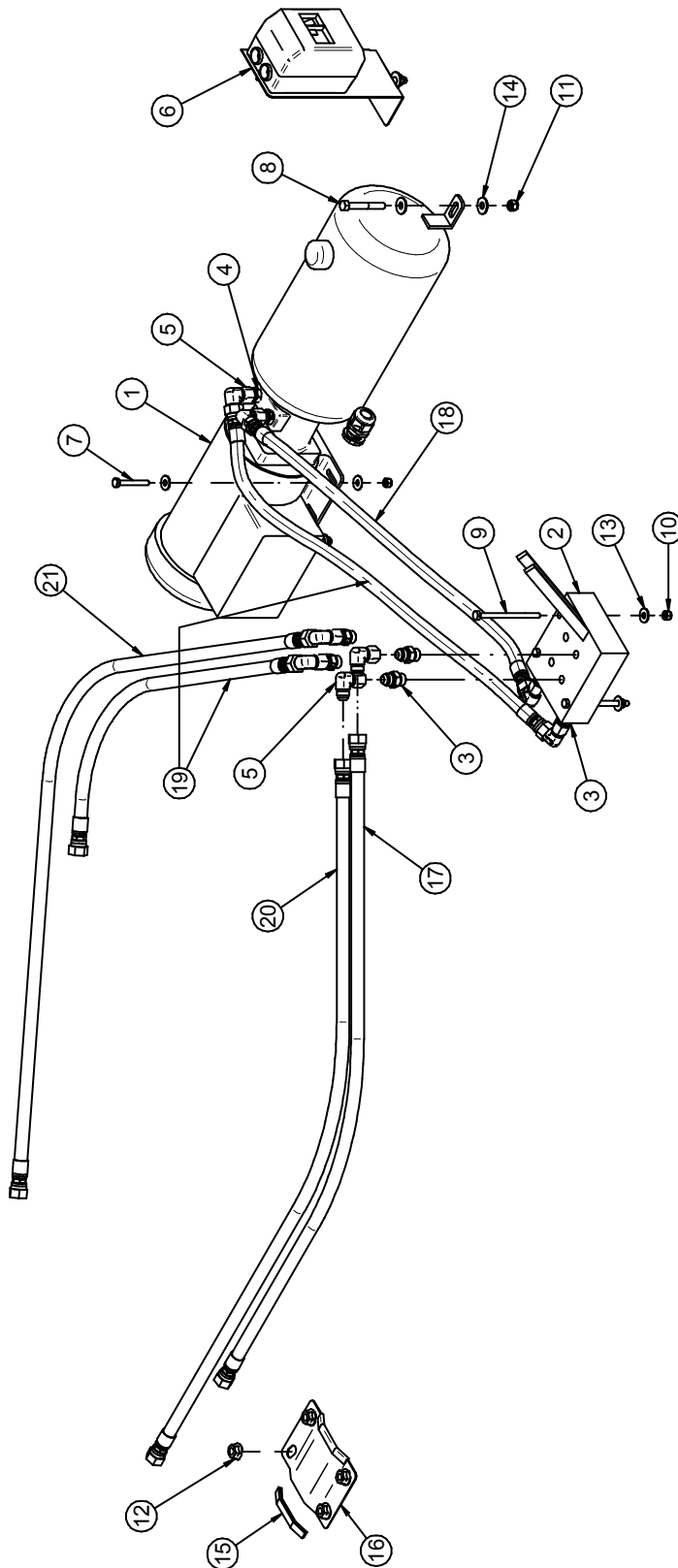
PORTABLE LPX TREATER

**ASSEMBLY CONVEYOR RESE WITH LOCK (13-05-0622 REV A1)**

PART #		13-05-0622 REV A1		
Item #	Part #	Description	Qty	See Page
1	05-03-1718	WDMT CNVR REST W/LK PORT	1	
2	05-03-1719	WDMT PIVOT CNVR REST W/LK	1	
3	05-03-1720	WDMT LATCH ROD	1	
4	06-01-0025	BOLT .500-13 X 1.50 ZP GR5	3	
5	06-01-0116	BOLT .375-16 X 2.75 ZP GR5	6	
6	06-02-0015	NUT JAM .500-20 ZP GR5	2	
7	06-03-0003	NUT NYL LOCK .375-16 ZP GR5	6	
8	06-03-0004	NUT NYL LOCK .500-13 ZP GR5	3	
9	06-05-0004	WSHR FLAT .375 ZP	6	
10	06-05-0005	WSHR FLAT .500 ZP	2	
11	06-09-0053	PIN HITCH .500 X 4.0 LG W-LINCH PIN	1	
12	06-09-0085	CLPSBL HOPP HNDL GRIP	1	
13	06-12-0008	CLVS .500-20 X .500	1	
14	06-12-0009	PIN CLIP SPRING .500	1	
15	105748	PLT BACKING CNVR REST	2	
16	1058EE	PLT LEVER LOCK	1	
17	1059D4	ROD FTH .500-20 X 4.50	1	

PORTABLE LPX TREATER

**ASSEMBLY ELECTRIC POWER PACK LPV PORTABLE (13-08-0721 REV A2)**



PORTABLE LPX TREATER

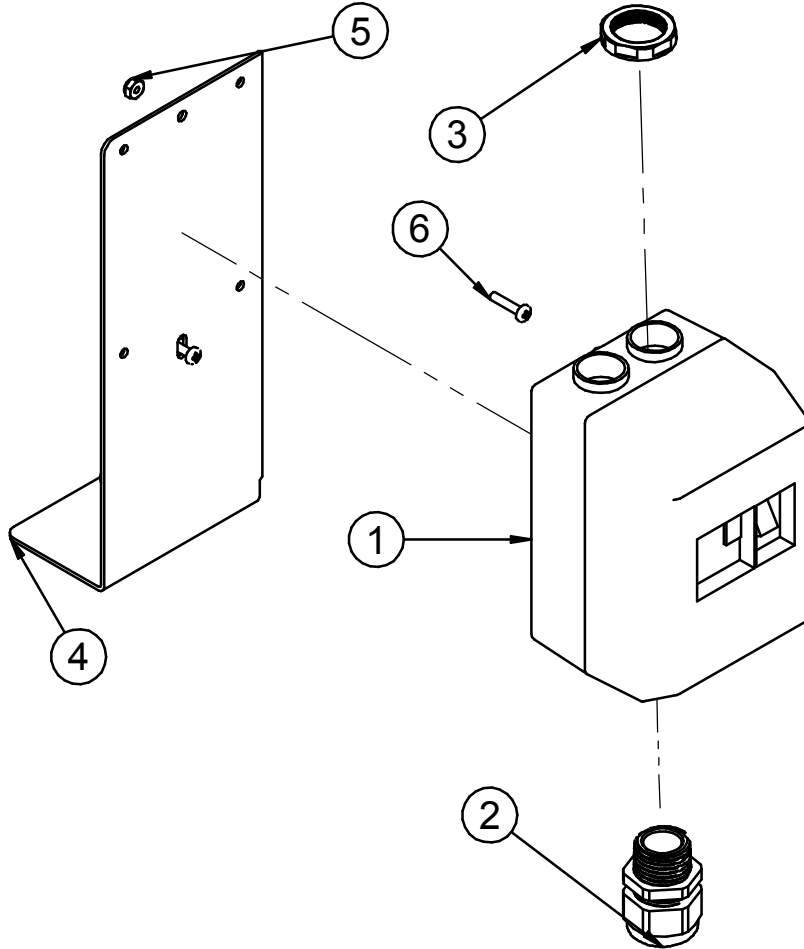
**ASSEMBLY ELECTRIC POWER PACK LPV PORTABLE (13-08-0721 REV A2)**

PART #		13-08-0721 REV A2		
Item #	Part #	Description	Qty	See Page
1	01-01-0257	HYD POWER PACK 2HP 1.0GPM 3000PSI	1	
2	02-02-0125	VLV HYD 2 SPOOL 8GPM	1	
3	02-05-0069	FTTG HYD STGHT 8MJ-8MOR	6	
4	02-05-0074	FTTG HYD STGHT 8MJ-6MP	2	
5	02-06-0059	FTTG HYD 90 DEG 8MJ-8FJX	8	
6	03-13-0037	KIT SW MNL MP 110V 2 HP MTR 24-32A	1	
7	06-01-0109	BOLT .313-18 X 2.25 ZP GR5	4	
8	06-01-0116	BOLT .375-16 X 2.75 ZP GR5	2	
9	06-01-0333	BOLT .3125-18 X 4.50 ZP GR5	3	
10	06-03-0002	NUT NYL LOCK .313-18 ZP GR5	7	
11	06-03-0003	NUT NYL LOCK .375-16 ZP GR5	2	
12	06-03-0015	NUT LOCK FLG .500-13 ZP GR5	4	
13	06-05-0003	WSHR FLAT .313 ZP	11	
14	06-05-0004	WSHR FLAT .375 ZP	4	
15	06-10-0025	EDGING SGRPG .375DP X .281W BLK	0.667	
16	10564A	HOSE RETAINER	1	
17	13-05-0335	HHA .375ID 094.0IN -08FJX -08FJX	1	
18	13-05-0397	HHA .375ID 031.2IN -08FJX -08FJX	1	
19	13-05-0412	HHA .375ID 034.6IN -08FJX -08FJX	2	
20	13-05-0599	HHA .375ID 109.0IN -08FJX -08FJX	1	
21	13-05-0601	HHA .375ID 054.0IN -08FJX -08FJX	1	



PORTABLE LPX TREATER

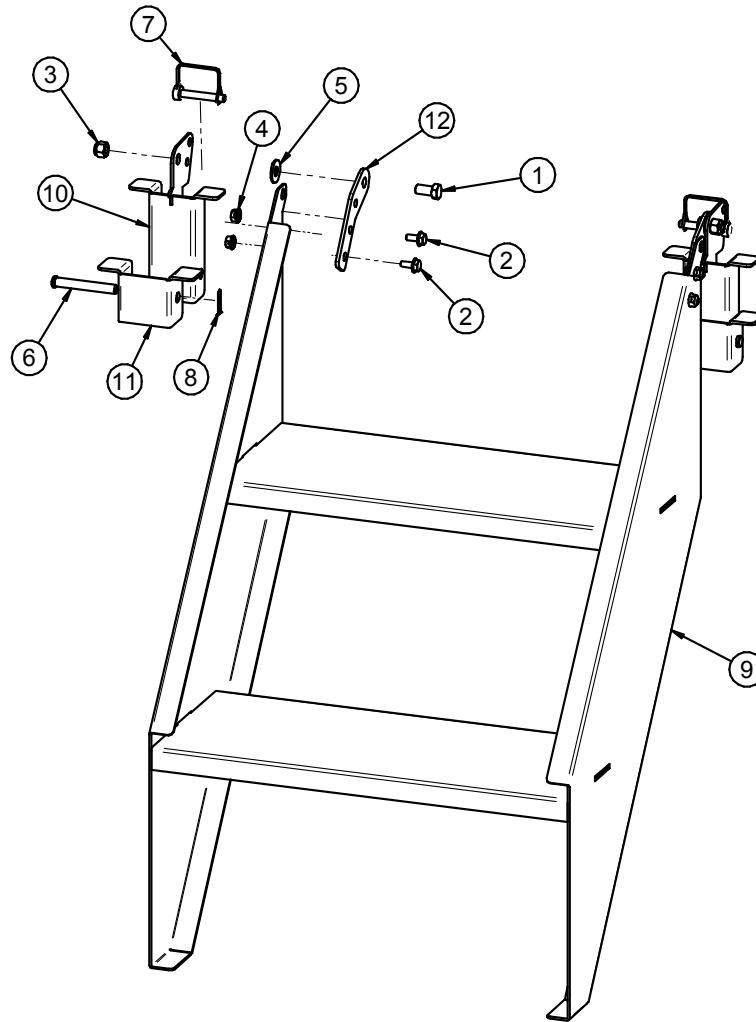
**KIT SWITCH MANUAL MP 110V W HP MOTOR 24-32 AMP (03-13-0038 REV A0)**



PART #		03-14-0037 REV A A0		
Item #	Part #	Description	Qty	See Page
1	03-04-0089	MP ENCL PLAS TMQ GV2MC02	1	
	03-04-0136	MP MNL 24-32A 600V TMQ GV2ME32	1	
2	03-06-0135	RECPT 2PL 3WIRE NEMA LI-30R 125V30A	1	
3	03-06-0136	PLUG 2PL 3WIRE NEMA LI-30P 125V30A	1	
4	03-07-0042	CORD 3COND 10AWG SE00W	4	
5	03-07-0042	CORD 3COND 10AWG SE00W	8.5	
6	03-08-0300	CONN CG .75NPT .450-.709 3235LTF	3	
7	03-08-0309	NUT NYLOC .750 NPT 8466	1	
8	05-10-2002	BRKT SW MP ENCL SS	1	

PORTABLE LPX TREATER

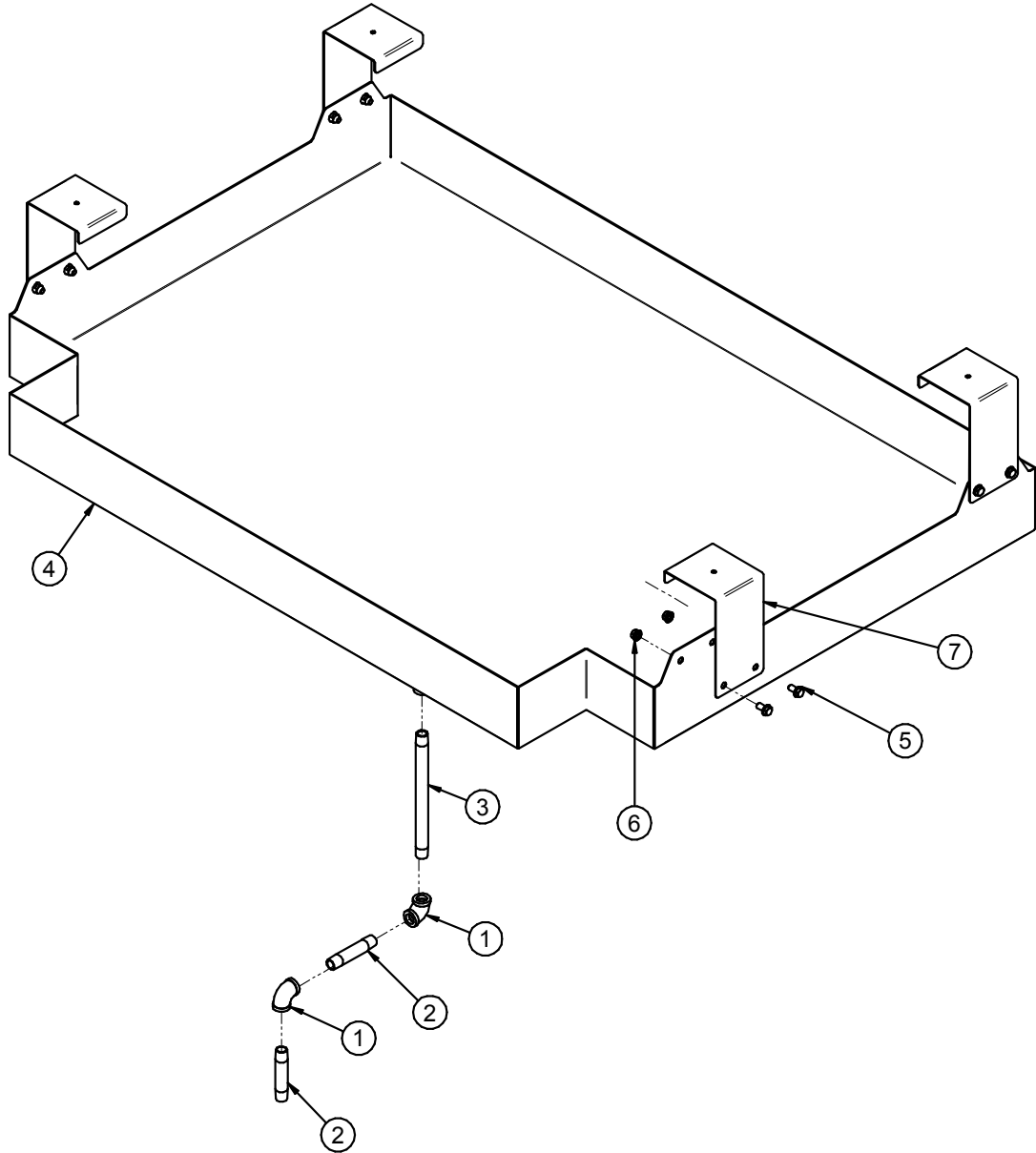
**KIT FOLD UP STEP PORTABLE (13-05-0592 REV A1)**



PART #		13-05-0592 REV A1		
Item #	Part #	Description	Qty	See Page
1	06-01-0069	BOLT .500-13 X 1.00 ZP GR5	2	
2	06-01-0124	BOLT FLG .375-16 X .750 ZP GR5	4	
3	06-03-0004	NUT NYL LOCK .500-13 ZP GR5	2	
4	06-03-0014	NUT LOCK FLG .375-16 ZP GR5	4	
5	06-05-0005	WSHR FLAT .500 ZP	2	
6	06-09-0005	PIN CLVS .500 X 3.50 PLN	2	
7	06-09-0079	PIN SFTY .375 X 2.5 SQ DBL WIRE	2	
8	06-09-0087	PIN CTTR .125 X 1.50 ZP	2	
9	1055CD	WDMT PORT STEP	1	
10	105702	WDMT HINGE	2	
11	105740	BRKT HINGE LOCK	2	
12	10574A	PLT HINGE ARM	2	

PORTABLE LPX TREATER

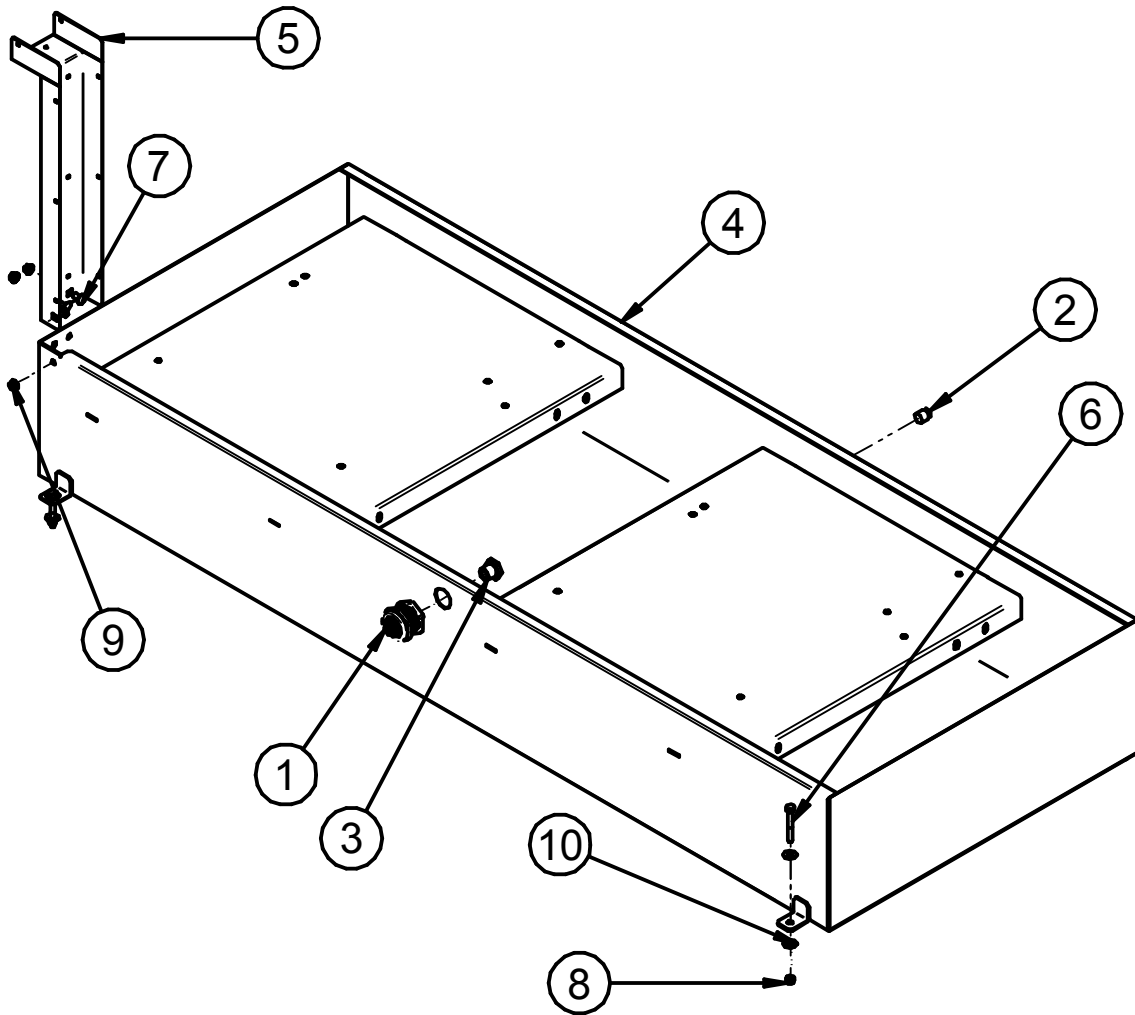
**ASSEMBLY LPV CONTAINMENT PAN (13-05-0609 REV A1)**



PART #		13-05-0690 REV A A1		
Item #	Part #	Description	Qty	See Page
1	02-06-0012	FTTG 90 DEG .500NPT FM SS	2	
2	02-07-0013	FTTG NIP .500 NPT X 4.00 TBE SS	2	
3	02-07-0058	FTTG NIP .500 NPT X 10.00 TBE SS	1	
4	05-03-1711	WDMT LPV CONTAIN PAN	1	
5	06-01-0124	BOLT FLG .375-16 X .750 ZP GR5	8	
6	06-03-0014	NUT LOCK FLG .375-16 ZP GR5	8	
7	10577A	MNT HANGER	4	

PORTABLE LPX TREATER

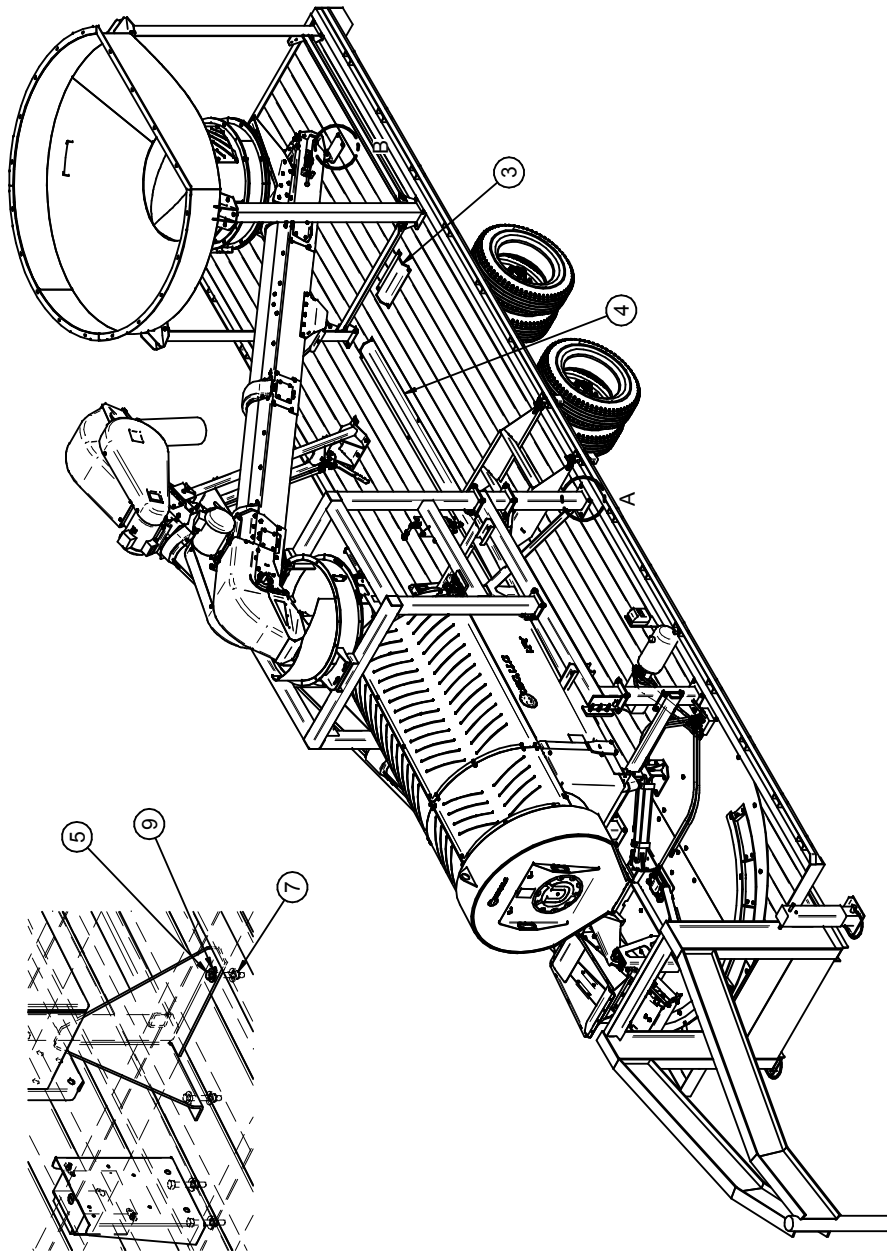
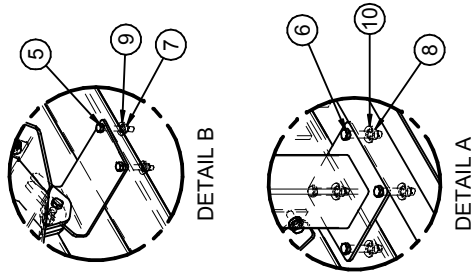
**ASSEMBLY PORTABLE CONTAINMENT PAN 2 PUMP STANDS**  
**(13-05-0610 REV B2)**



PART #		13-05-0610 REV B B2		
Item #	Part #	Description	Qty	See Page
1	02-05-0045	FTTG .750 NPT DBL THD PPE BULKHEAD	1	
2	02-14-0001	FTTG PLUG SQHD .500 NPT SS	1	
3	02-14-0014	FTTG PLUG .750-14 NPT PLUG BP	1	
4	05-03-1825	WDMT CONTAINMENT PAN 2 TNK	1	
5	05-03-1826	WDMT TUBE SUPPORT	1	
6	06-01-0116	BOLT .375-16 X 2.75 ZP GR5	4	
7	06-01-0153	BOLT CRG .375-16X.750 ZP SHORT NECK	3	
8	06-03-0003	NUT NYL LOCK .375-16 ZP GR5	4	
9	06-03-0014	NUT LOCK FLG .375-16 ZP GR5	3	
10	06-05-0004	WSHR FLAT .375 ZP	8	

PORTABLE LPX TREATER

**HARDWARE KIT LPV PORTABLE TREATER (13-10-0055 REV B2)**



PORTABLE LPX TREATER

**HARDWARE KIT LPV PORTABLE TREATER (13-10-0055 REV B2)**

PART #		13-10-0055 REV A A2		
Item #	Part #	Description	Qty	See Page
1	03-08-0284	CONN TRCK RSM RKM 44-6M/S4000	1	
2	03-08-0316	CONN TRCK RK4.4T-8-RS4.4T/S760/S771	2	
3	05-06-0109	ASSY CVR WIRE/HOSE GRD	1	
4	05-06-0110	ASSY CVR WIRE/HOSE GRD	1	
5	06-01-0116	BOLT .375-16 X 2.75 ZP GR5	10	
6	06-01-0252	BOLT .500-13 X 3.00 ZP GR5	28	
7	06-03-0003	NUT NYL LOCK .375-16 ZP GR5	10	
8	06-03-0004	NUT NYL LOCK .500-13 ZP GR5	28	
9	06-05-0004	WSHR FLAT .375 ZP	14	
10	06-05-0005	WSHR FLAT .500 ZP	28	
11	06-06-0001	TRLR SCRW SDST 2.50 PHHD SS SLG CAP	8	

**INDEX BY PART NUMBER****SECTION  
C**

## LPX / LPV PORTABLE TREATER PARTS MANUAL

PART #	REVISION	LEVEL	DESCRIPTION (M2M)	PAGE #
		C0	PORTABLE TREATER	14
			MOTOR TABLE	33
03-13-0037	A	A0	KIT SW MNL MP 110V 2 HP MTR 24-32A	57
13-04-0257	A	0	ASSY HOPP PORT LPV	21
13-05-0332	A	A0	ASSY MANUAL TUBE MNT	48
13-05-0478	B	B0	ASSY BRUSH W\CLIPS 11.25	47
13-05-0479	B	B0	ASSY BRUSH W\CLIPS 11.88	47
13-05-0586	C	C0	ASSY CNVR PIVOT	51
13-05-0592	A	A1	ASSY FOLD UP STEP PORT	58
13-05-0594	B	B5	ASSY LPV PORT PIVOT	49
13-05-0609	A	A1	ASSY LPV CONTAIN PAN	59
13-05-0610	B	B2	ASSY PORT CONTAIN PAN LPV 2PMP	60
13-05-0622	A	A1	ASSY CNVR REST W/LK PORT	53
13-05-0697	A	A0	ASSY 10"ID FLEX SPOUT	36
13-05-0734	A	A0	KIT SEAL INLET LPV	44
13-08-0540	C	C0	ASSY LG RIGID INLET HOPPER TS25	43
13-08-0668	A	A0	ASSY INLET EXT CLEAN OUT	37
13-08-0705	A	A0	ASSY ADJ SPOUT TS CNVRS	35
13-08-0707	A	A0	ASSY INLET CLNOUT TS25 PORT	38
13-08-0721	A	A2	ASSY ELEC PWR PK LPV PORT 120V	55
13-08-0736	A	A1	ASSY INLET HOP TS25 LPV PORT	45
13-08-0746	A	A0	ASSY TRACKING PLT HD	34
13-08-0747	A	A0	ASSY INLET SECT TS25 LG BRG	39
13-08-0782	A	A2	ASSY HEAD SECT TS25 LG BRG	30
13-08-0783	A	A0	KIT DRV 5HP TS25 DD LG BRG	32
13-08-0790	A	A0	ASSY INLET SECT TS25 LPV LG BRG	41
13-08-0798	A	A1	ASSY HD SECT TS2517 LPV-PORT	27
13-08-0806	A	A1	ASSY TS25 17FT BASE PORT LPV	23
13-08-0808	A	A1	ASSY TS25 20FT BASE PORT LPV	25
13-10-0055	A	A2	KIT HDWR LPV PORT TRTR	61
TS25x174xPV	A	A0	TS25 CONVEYOR 1.5IN BRGS & PULLEYS	22
TS25x206xPV			TS25 CONVEYOR 1.5IN BRGS & PULLEYS	24

PORTABLE LPX TREATER

**NOTES:**



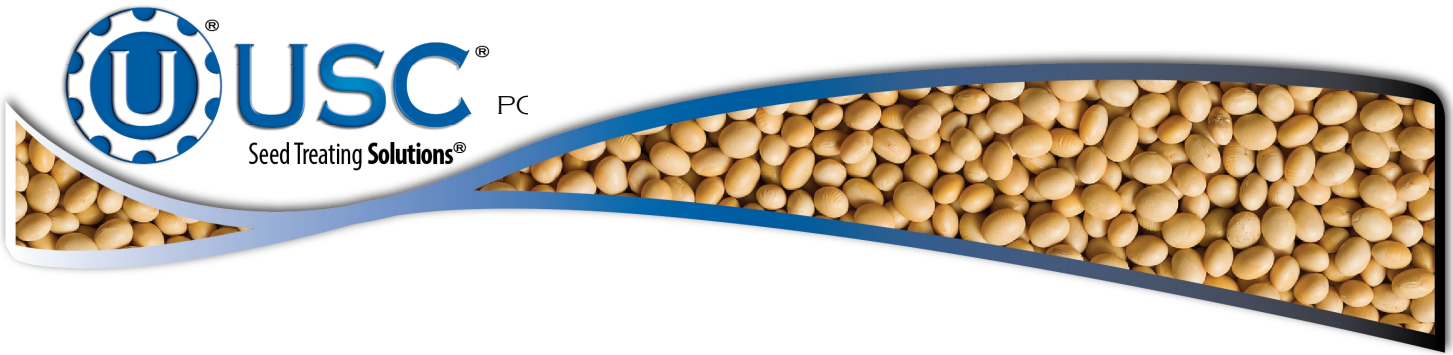
**USC LIMITED WARRANTY****SECTION  
D**

USC, LLC, (Manufacturer) warrants its seed treating equipment as follows:

1. **Limited Warranty:** Manufacturer warrants that the Products sold hereunder will be free from defects in material and workmanship for a period of 18 months from date of shipment. If the Products do not conform to this Limited Warranty during the warranty period, Buyer shall notify Manufacturer in writing of the claimed defects and demonstrate to Manufacturer satisfaction that said defects are covered by this Limited Warranty. If the defects are properly reported to Manufacturer within the warranty period, and the defects are of such type and nature as to be covered by this warranty, Manufacturer shall, at its expense, furnish replacement Products or, at Manufacturer's option, replacement parts for the defective products. Shipping and installation of the replacement Products or replacement parts shall be at the Buyer's expense.
2. **Other Limits:** THE FOREGOING IS IN LIEU OF ALL OTHER WARRANTIES, EXPRESSED OR IMPLIED, INCLUDING BUT NOT LIMITED TO THE IMPLIED WARRANTIES OF MERCHANTABILITY AND FITNESS FOR A PARTICULAR PURPOSE. Manufacturer does not warrant against damages or defects arising from improper installation (where installation is by persons other than Manufacturer), against defects in products or components not manufactured by Manufacturer, or against damages resulting from such non-Manufacturer made products or components. Manufacturer passes on to the Buyer the warranty it received (if any) from the maker of such non-Manufacturer made products or components. This warranty also does not apply to Products upon which repairs and / or modifications have been effected or attempted by persons other than pursuant to written authorization by Manufacturer. This includes any welding on equipment which could damage electrical components. Manufacturer does not warrant against casualties or damages resulting from misuse and / or abuse of Products, improper storage or handling, acts of nature, effects of weather, including effects of weather due to outside storage, accidents, or damages incurred during transportation by common carrier.
3. **Exclusive Obligation:** THIS WARRANTY IS EXCLUSIVE. The sole and exclusive obligation of Manufacturer shall be to repair or replace the defective Products in the manner and for the period provided above. Manufacturer shall not have any other obligation with respect to the Products or any part thereof, whether based on contract, tort, strict liability or otherwise. Under no circumstances, whether based on this Limited Warranty or otherwise, shall Manufacturer be liable for lost profits, lost revenue, lost sales (whether direct or indirect damages), incidental, special, punitive, indirect or consequential damages.
4. **Other Statements:** Manufacturer's employees or representatives' oral or other written statements do not constitute warranties, shall not be relied upon by Buyer, and are not a part of the contract for sale or this limited warranty.
5. **Return Policy:** Approval is required prior to returning goods to Manufacturer. A restocking fee will apply.
6. **Entire Obligation:** This Limited Warranty states the entire obligation of Manufacturer with respect to the Products. If any part of this Limited Warranty is determined to be void or illegal, the remainder shall remain in full force and effect.

US / Canada Non-Exclusive 2016





DOCUMENT REVIEW RECORD	
DATE	BY
03-20	BT

**USC, LLC**

2320 124th road

Sabetha, KS 66534

EMAIL: [sales-team@uscllc.com](mailto:sales-team@uscllc.com)

WEB: [www.uscllc.com](http://www.uscllc.com)

