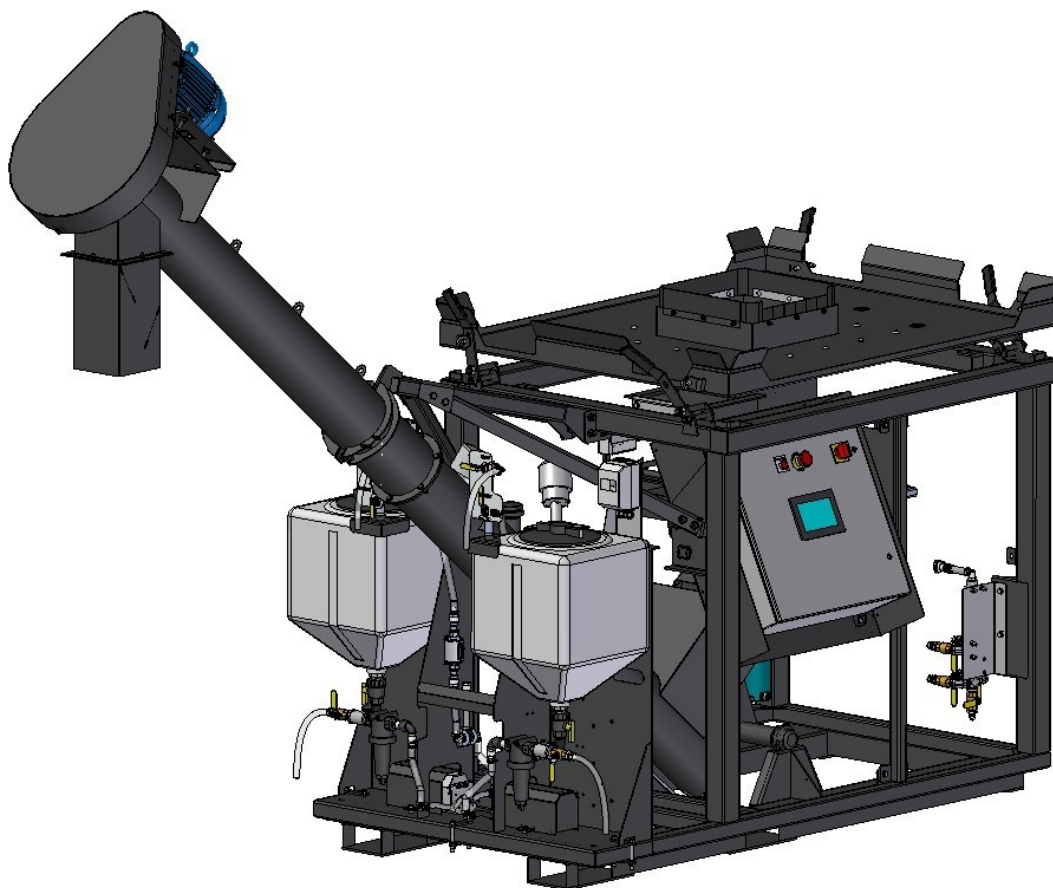


# AT500 SEED TREATER

## EQUIPMENT REVISION: G



## **PARTS MANUAL**

**Document: MD-09-06-5009    Revision: A    Effective Date: 02-2020**



# INTRODUCTION

Thank you for choosing USC, LLC for your equipment needs. We appreciate your business and will work diligently to ensure that you are satisfied with your choice.

## OVERVIEW

The purpose of this manual is to provide you with the basic information needed to operate and maintain the AT500H Automated Treater. It does not hold USC, LLC liable for any accidents or injuries that may occur.

The technical information provided in this document is based on extensive testing under controlled conditions at the USC research and development facility. This information is given without guarantee as the conditions of operation and storage of the equipment are beyond our control. Variables such as temperature, humidity, viscosity of chemical products and changes in seed size or variety may all effect the accuracy of application and seed coverage. Periodically check the equipment calibration while treating and make adjustments as required. This will insure the optimum seed coverage.

## RECEIVING YOUR EQUIPMENT

As soon as the equipment is received, it should be carefully inspected to make certain that it has sustained no damage during shipment and that all items listed on the packing list are accounted for. If there is any damage or shortages, the purchaser must immediately notify USC, LLC. Ownership passes to purchaser when the unit leaves the USC, LLC. premises. The purchaser is responsible for unloading and mounting all components of the equipment.

Document the serial number of the machine for future reference. The serial number is located on the frame above the treater control panel.



**SERIAL NUMBER:** \_\_\_\_\_

# TABLE OF CONTENTS

<b><u>Section</u></b>	<b><u>Contents</u></b>	<b><u>Page #</u></b>
<b>Section A</b>	<b>Safety Instructions .....</b>	<b>4</b>
<b>Section B</b>	<b>Mechanical Parts Drawings .....</b>	<b>13</b>
	Index by Part Number.....	70
<b>Section J</b>	<b>Limited Warranty .....</b>	<b>72</b>

## SECTION A SAFETY INSTRUCTIONS

Every year accidents in the work place maim, kill and injure people. Although it may be impossible to prevent all accidents, with the right combination of training, operating practices, safety devices and operator vigilance, the number of accidents can be significantly reduced. The purpose of this section is to educate equipment users about hazards, unsafe practices and recommended hazard avoidance techniques.

### SAFETY WORDS AND SYMBOLS

It is very important that operators and maintenance personnel understand the words and symbols that are used to communicate safety information. Safety words, their meaning and format, have been standardized for U.S. manufacturers and published by the American National Standards Institute (ANSI). The European Community (E.C.) has adopted a different format based on the International Standards Organization (I.S.O.) and applicable machinery directives. Both formats are presented below. Graphic symbols are not standardized but most manufacturers will use some variation of the ones seen in this manual.



Indicates an imminently hazardous situation which, if not avoided, **will** result in death or serious injury.



Indicates a potentially hazardous situation which, if not avoided, **could** result in death or serious injury.



Indicates a potentially hazardous situation which, if not avoided, **may** result in minor or moderate injury and/or property damage.



Provides additional information that the operator needs to be aware of to avoid a potentially hazardous situation.



**Mandatory Lockout Power Symbol.** Disconnect, lockout and tagout electrical and other energy sources before inspecting, cleaning or performing maintenance on this panel.



**International Safety Alert Symbol.** The exclamation point (!) surrounded by a yellow triangle indicates that an injury hazard exists. However, it does not indicate the seriousness of potential injury. The exclamation point (!) is also used with the DANGER, WARNING and CAUTION symbols so the potential injury is indicated.



**Electrocution Hazard Symbol.** This symbol indicates that an electrocution hazard exists. Serious injury or death could result from contacting high voltage.



**International Electrocution Hazard.** This symbol indicates that an electrocution hazard exists. Serious injury or death could result from contacting high voltage.



**Mandatory Read Manual Action Symbol.** (I.S.O. format) This symbol instructs personnel to read the Operators Manual before servicing or operating the equipment.



**Mandatory Read Manual Action Symbol.** This symbol instructs personnel to read the Operators Manual before servicing or operating the equipment.



Notice is used to notify people of important installation, operation or maintenance information which is not hazard related.

## **LOCKOUT / TAGOUT PROCEDURES**

Lockout/Tagout is the placement of a lock/tag on an energy isolating device in accordance with an established procedure. When taking equipment out of service to perform maintenance or repair work, always follow the lockout/tagout procedures as outlined in ANSI Z344.1 and/or OSHA Standard 1910.147. This standard “requires employers to establish a program and utilize procedures for affixing appropriate lockout devices or tagout devices to energy isolating devices and to otherwise disable machines or equipment to prevent unexpected energizing, start-up, or release of stored energy in order to prevent injury to employees.”

## **HAZARD REVIEW**

### **Electrocution Hazard**



Electrocution accidents are most likely to occur during maintenance of the electrical system or when working on or near exposed high voltage wiring. This hazard does not exist when the electrical power has been disconnected, properly locked, and tagged out.



### **Automatic Start Hazard**



This equipment may be controlled by an automated system and may start without warning. Failure to properly disconnect, lockout, and tagout all energy sources of remotely controlled equipment creates a very hazardous situation and could cause injury or even death. PLEASE STAY CLEAR AND BE ALERT.



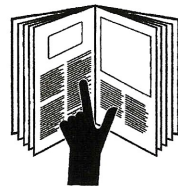
**YOU** are responsible for the **SAFE** operation and maintenance of your USC, LLC equipment . **YOU** must ensure that you and anyone else who is going to operate, maintain or work around the equipment be familiar with the operating and maintenance procedures and related **SAFETY** information contained in this manual. This manual will take you step-by-step through your working day and alert you to good safety practices that should be adhered to while operating the equipment

Remember, **YOU** are the key to safety. Good safety practices not only protect you, but also the people around you. Make these practices a working part of your safety program. Be certain that **EVERYONE** operating this equipment is familiar with the recommended operating and maintenance procedures and follows all the safety precautions. Most accidents can be prevented. Do not risk injury or death by ignoring good safety practices.

- Equipment owners must give operating instructions to operators or employees before allowing them to operate the machine, and at least annually thereafter per OSHA (Occupational Safety and Health Administration) regulation 1928.57.
- The most important safety device on this equipment is a **SAFE** operator. It is the operator's responsibility to read and understand **ALL** Safety and Operating instructions in the manual and to follow them. All accidents can be avoided.
- A person who has not read and understood all operating and safety instructions is not qualified to operate the machine. An untrained operator exposes himself and bystanders to possible serious injury or death.
- Do not modify the equipment in any way. Unauthorized modification may impair the function and/or safety and could affect the life of the equipment.
- Think SAFETY! Work SAFELY!

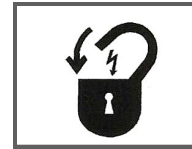
### GENERAL SAFETY

1. Read and understand the operator's manual and all safety labels before operating, maintaining, adjusting or unplugging the equipment .
2. Only trained persons shall operate the equipment . An untrained operator is not qualified to operate the machine.
3. Have a first-aid kit available for use should the need arise, and know how to use it.



## AT500H TREATER

4. Provide a fire extinguisher for use in case of an accident. Store in a highly visible place.
5. Do not allow children, spectators or bystanders within hazard area of machine.
6. Wear appropriate protective gear. This includes but is not limited to:
  - A hard hat
  - Protective shoes with slip resistant soles
  - Protective goggles
  - Heavy gloves
  - Hearing protection
  - Respirator or filter mask
7. Place all controls in neutral or off, stop motor, and wait for all moving parts to stop. Then disable power source before servicing, adjusting, repairing, or unplugging.
8. Review safety related items annually with all personnel who will be operating or maintaining the equipment.



### **OPERATING SAFETY:**

1. Read and understand the operator's manual and all safety labels before using.
2. Disconnect and disable electrical supply completely and wait for all moving parts to stop before servicing, adjusting, repairing or unplugging.
3. Clear the area of bystanders, especially children, before starting.
4. Be familiar with the machine hazard area. If anyone enters hazard area, shut down machine immediately. Clear the area before restarting.
5. Keep hands, feet, hair and clothing away from all moving and/or rotating parts.
6. Stay away from overhead obstructions and power lines during operation and transporting. Electrocution can occur without direct contact.
7. Do not operate machine when any guards are removed.
8. Inspect welds and repair if needed.



### **PLACEMENT SAFETY**

1. Move only with the appropriate equipment
2. Stay away from overhead power lines when moving equipment. Electrocutation can occur without direct contact.
3. Be familiar with machine hazard area. If anyone enters hazard areas, shut down machine immediately. Clear the area before restarting.
4. Operate the equipment on level ground free of debris. Anchor the equipment to prevent tipping or upending.



Before placement of the equipment , be sure that ground is reasonably level. The equipment may topple or work improperly if the ground is too uneven, damaging the equipment and/or causing personal injury.

### **MAINTENANCE SAFETY**

1. Review the operator's manual and all safety items before working with, maintaining or operating the equipment .
2. Place all controls in neutral or off, stop motors, disable power source, and wait for all moving parts to stop before servicing, adjusting, repairing or unplugging.
3. Follow good shop practices:  
Keep service area clean and dry.  
Be sure electrical outlets and tools are properly grounded.  
Use adequate light for the job at hand.
4. Keep hands, feet, hair and clothing away from all moving and/or rotating parts.
5. Clear the area of bystanders, especially children, when carrying out any maintenance and repairs or making any adjustments.
6. Before resuming work, install and secure all guards when maintenance work is completed.
7. Keep safety labels clean. Replace any sign that is damaged or not clearly visible.



## **SAFETY LABELS**

1. Keep safety labels clean and legible at all times.
2. Replace safety labels that are missing or have become illegible.
3. Replaced parts that displayed a safety label should also display the current label.
4. Replacement safety labels are available. Contact your authorized dealer

### **How to Install Safety Labels:**

- Be sure that the installation area is clean and dry.
- Be sure temperature is above 50°F (10°C).
- Decide on the exact position before you remove the backing paper.
- Remove the smallest portion of the split backing paper.
- Align the sign over the specified area and carefully press the small portion with the exposed sticky backing in place.
- Slowly peel back the remaining paper and carefully smooth the remaining portion of the sign in place.
- Small air pockets can be pierced with a pin and smoothed out using the piece of sign backing paper.



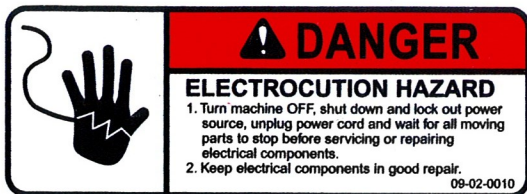
Located on the USC equipment you will find safety labels. Always be sure to read and follow all directions on the labels.



Guards provided with USC equipment are to remain in place during operation.

Think **SAFETY!** Work **SAFELY!**

REMEMBER—If safety labels have been damaged, removed, become illegible, or parts replaced without safety labels, new labels must be applied. New safety labels are available from your authorized dealer.



Part # 09-02-0010



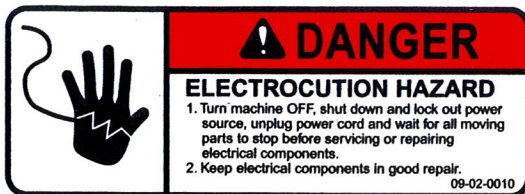
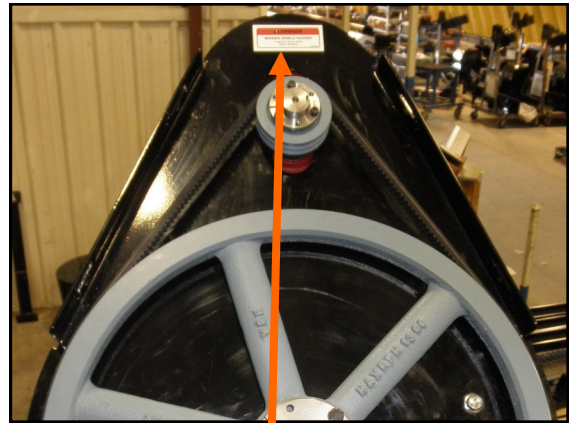
Part # 09-02-0003



AT500H TREATER



Part # 09-02-0001



Part # 09-02-0010



Part # 09-02-0012

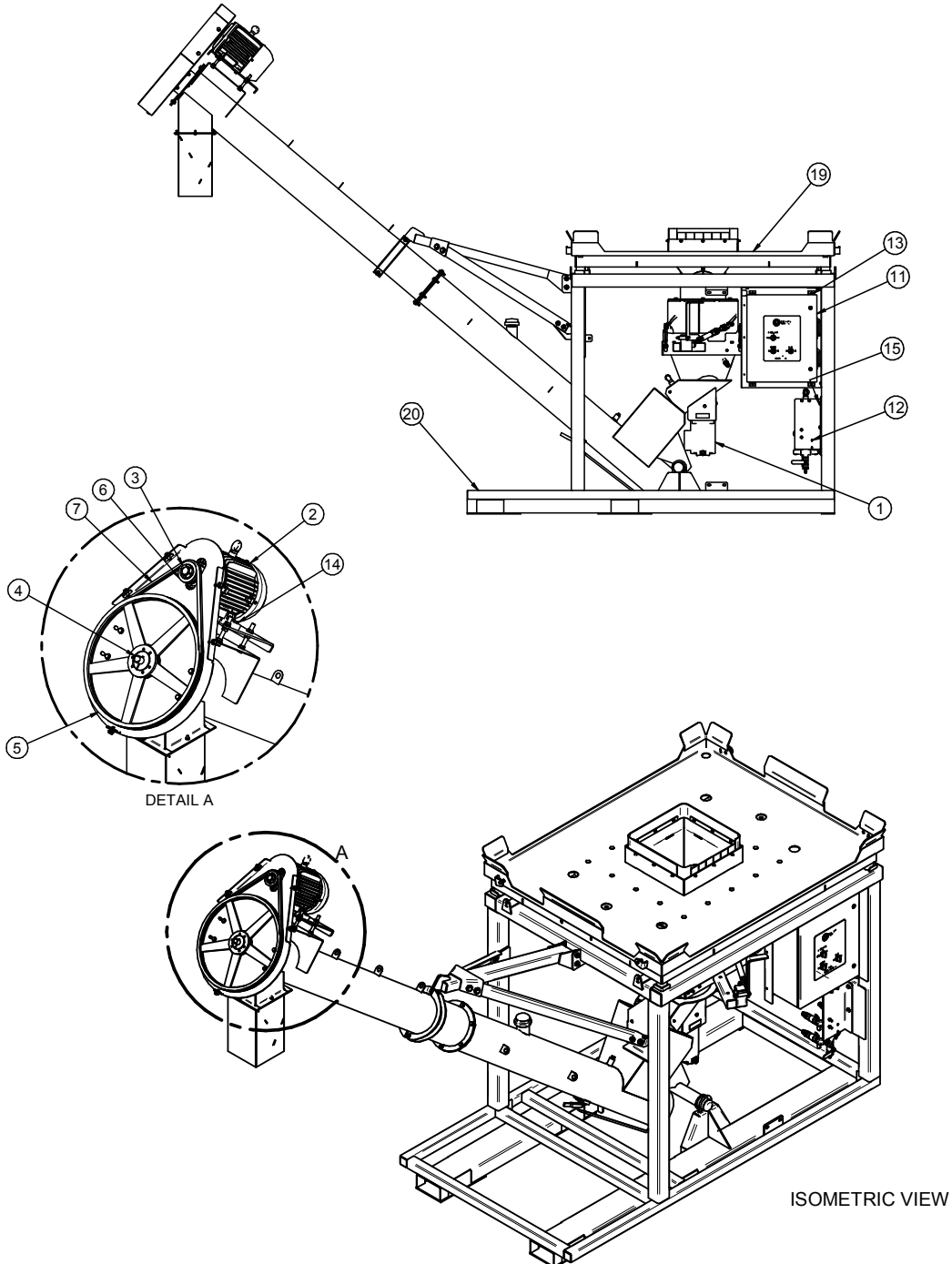


**SECTION  
B**

**MECHANICAL DRAWINGS**

The following pages show the parts of the AT500 Seed Treater. Please have the treater serial number and part number ready when ordering parts.

**AT500 MANUAL B2B TREATER (13-01-0303 REV G0)**



AT500H TREATER

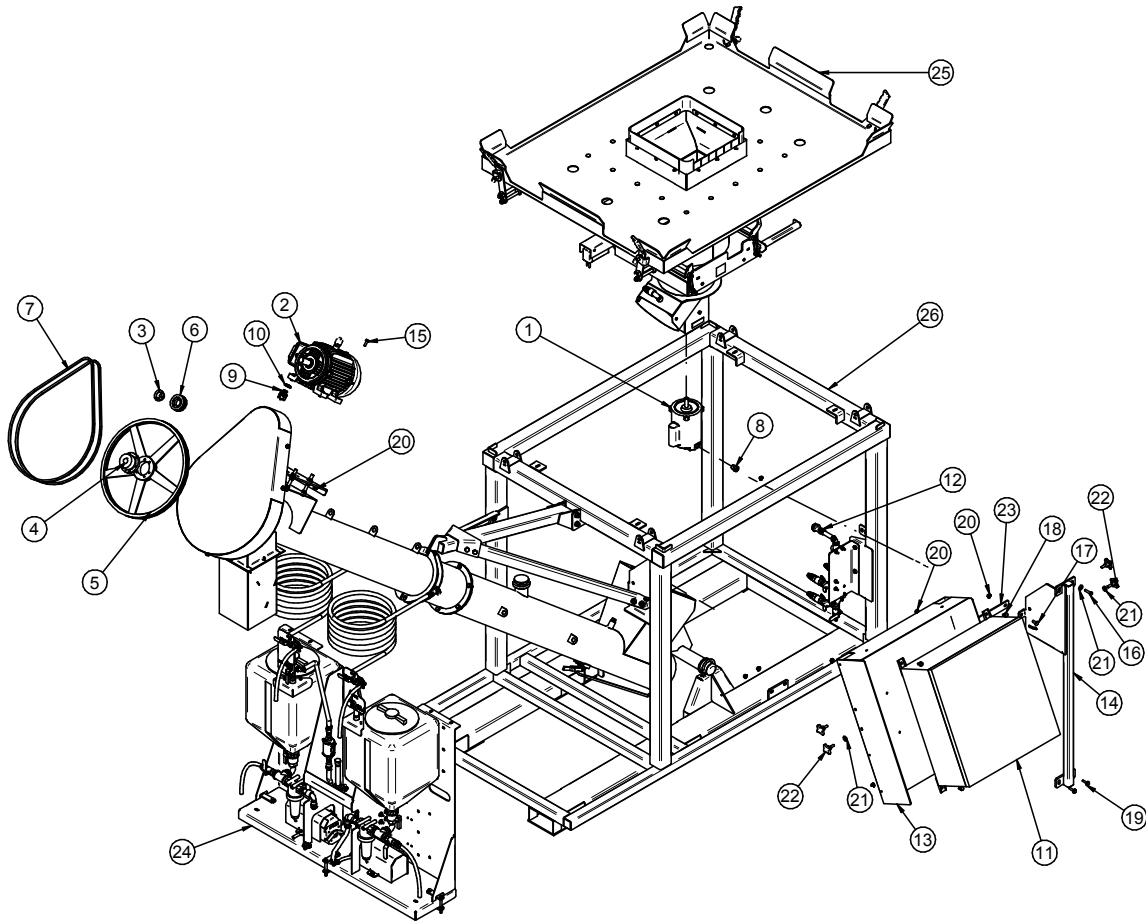
**AT500 MANUAL B2B TREATER (13-01-0303 REV G0)**

PART #		13-01-0303 REV G0		
Item #	Part #	Description	Qty	See Page
1	01-01-0104	MTR .33HP 1725RPM 56C 1PH TENV	1	
2	01-01-0127	MTR 3HP 1750RPM 184T TEFC 1PH	1	
3	01-08-0029	BUSH 1.125IN BORE TYPE JA	1	
4	01-08-0037	BUSH 1.000IN BORE TYPE SK	1	
5	01-08-0070	SHV 3V19.00X2 SK	1	
6	01-08-0071	SHV 3V3.0X2 JA	1	
7	01-08-0072	BELT 3VX670	2	
8	03-06-0101	PLUG TURCK RSF 44-0.5M/NPT	1	
9	03-08-0300	CONN CG .75NPT .450-.709 3235LTF	1	
10	03-08-0309	NUT NYLOC .750 NPT 8466	1	
11	03-12-0378	PNL CNTL MNL ST AT500H 230V 1PH	1	
12	04-03-0254	ASSY STTC MXR & VLVS LPX TRTR QD	1	43
13	06-01-0006	BOLT .250-20 X .750 ZP GR5	4	
14	06-01-0016	BOLT .375-16 X 1.00 ZP GR5	4	
15	06-01-0124	BOLT FLG .375-16 X .750 ZP GR5	5	
16	06-03-0013	NUT LOCK FLG .250-20 ZP GR5	4	
17	06-03-0014	NUT LOCK FLG .375-16 ZP GR5	9	
18	1052D2	PLT AT500 PNL MNT	1	
19	13-08-0689	ASSY AT500H MNL BOX PARTS	1	26
20	13-11-0041	ASSY BASE AT500 144IN AUGER RL SCL	1	21



AT500H TREATER

**AT500 B2B LIW TREATER WITH 10 GALLON PUMP STAND AND FLOW METER**  
**(13-01-0358 REV G0)**



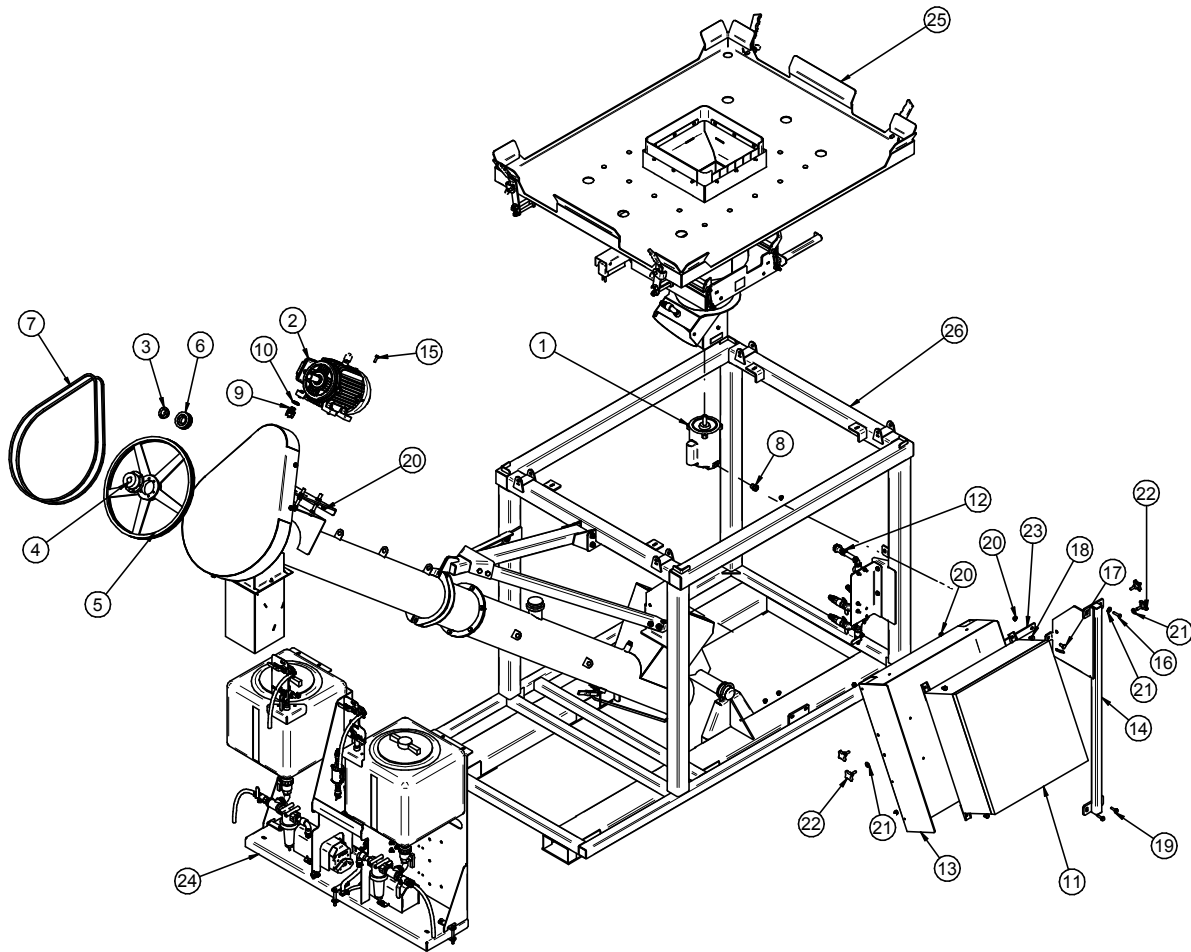
AT500H TREATER

**AT500 B2B LIW TREATER WITH 10 GALLON PUMP STAND AND FLOW METER**  
**(13-01-0358 REV G0)**

PART #		13-01-0358 REV G0		
Item #	Part #	Description	Qty	See Page
1	01-01-0104	MTR .33HP 1725RPM 56C 1PH TENV	1	
2	01-01-0127	MTR 3HP 1750RPM 184T TEFC 1PH	1	
3	01-08-0029	BUSH 1.125IN BORE TYPE JA	1	
4	01-08-0037	BUSH 1.000IN BORE TYPE SK	1	
5	01-08-0070	SHV 3V19.00X2 SK	1	
6	01-08-0071	SHV 3V3.0X2 JA	1	
7	01-08-0072	BELT 3VX670	2	
8	03-06-0101	PLUG TURCK RSF 44-0.5M/NPT	1	
9	03-08-0300	CONN CG .75NPT .450-.709 3235LTF	1	
10	03-08-0309	NUT NYLOC .750 NPT 8466	1	
11	03-12-0574	PNL CNTL AT500H AUTO 240V 1PH	1	
12	04-03-0254	ASSY STTC MXR & VLVS LPX TRTR QD	1	43
13	05-03-1799	WDMT PNL MNT AT500 24X24	1	
14	05-03-1801	WDMT PNL MNT SWLV SUPP	1	
15	06-01-0016	BOLT .375-16 X 1.00 ZP GR5	4	
16	06-01-0018	BOLT .375-16 X 1.50 ZP GR5	2	
17	06-01-0115	BOLT CRG .375-16 X 1.00 ZP GR5	2	
18	06-01-0124	BOLT FLG .375-16 X .750 ZP GR5	6	
19	06-01-0189	BOLT FLG .375-16 X 1.250 ZP GR5	2	
20	06-03-0014	NUT LOCK FLG .375-16 ZP GR5	16	
21	06-05-0004	WSHR FLAT .375 ZP	6	
22	06-09-0066	KNOB .375 -16 X 1. 4 LUG PLASTIC	4	
23	106234	BRACE	1	
24	13-05-0692	ASSY AT500 DUAL PUMPSTAND 2 FLMTR	1	44
25	13-08-0867	ASSY AT500H LIW PARTS 2 PMP RL SCL	1	33
26	13-11-0041	ASSY BASE AT500 144IN AUGER RL SCL	1	21

AT500H TREATER

**AT500 B2B LIW TREATER WITH 15GALLON PUMP STAND AND FLOW METER**  
**(13-01-0360 REV G0)**



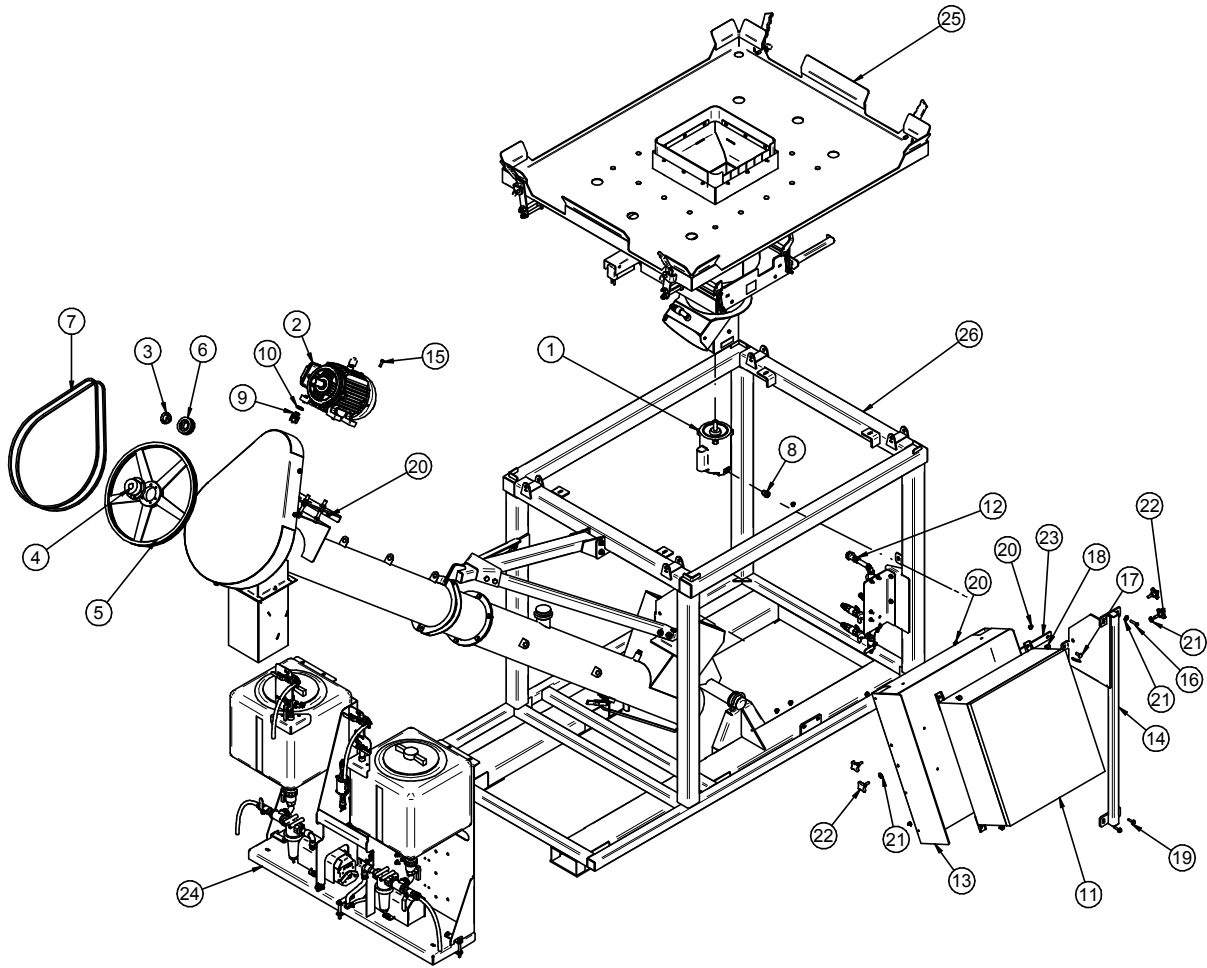
AT500H TREATER

**AT500 B2B LIW TREATER WITH 15GALLON PUMP STAND AND FLOW METER**  
**(13-01-0360 REV G0)**

PART #		13-01-0360 REV G0		
Item #	Part #	Description	Qty	See Page
1	01-01-0104	MTR .33HP 1725RPM 56C 1PH TENV	1	
2	01-01-0127	MTR 3HP 1750RPM 184T TEFC 1PH	1	
3	01-08-0029	BUSH 1.125IN BORE TYPE JA	1	
4	01-08-0037	BUSH 1.000IN BORE TYPE SK	1	
5	01-08-0070	SHV 3V19.00X2 SK	1	
6	01-08-0071	SHV 3V3.0X2 JA	1	
7	01-08-0072	BELT 3VX670	2	
8	03-06-0101	PLUG TURCK RSF 44-0.5M/NPT	1	
9	03-08-0300	CONN CG .75NPT .450-.709 3235LTF	1	
10	03-08-0309	NUT NYLOC .750 NPT 8466	1	
11	03-12-0574	PNL CNTL AT500H AUTO 240V 1PH	1	
12	04-03-0254	ASSY STTC MXR & VLVS LPX TRTR QD	1	43
13	05-03-1799	WDMT PNL MNT AT500 24X24	1	
14	05-03-1801	WDMT PNL MNT SWLV SUPP	1	
15	06-01-0016	BOLT .375-16 X 1.00 ZP GR5	4	
16	06-01-0018	BOLT .375-16 X 1.50 ZP GR5	2	
17	06-01-0115	BOLT CRG .375-16 X 1.00 ZP GR5	2	
18	06-01-0124	BOLT FLG .375-16 X .750 ZP GR5	6	
19	06-01-0189	BOLT FLG .375-16 X 1.250 ZP GR5	2	
20	06-03-0014	NUT LOCK FLG .375-16 ZP GR5	16	
21	06-05-0004	WSHR FLAT .375 ZP	6	
22	06-09-0066	KNOB .375 -16 X 1. 4 LUG PLASTIC	4	
23	106234	BRACE	1	
24	13-05-0726	ASSY AT500 DUAL PMPSTD 2 FLMTR 15GL	1	55
25	13-08-0867	ASSY AT500H LIW PARTS 2 PMP RL SCL	1	33
26	13-11-0041	ASSY BASE AT500 144IN AUGER RL SCL	1	21

AT500H TREATER

**AT500 B2B LIW TREATER WITH 15GALLON PUMP STAND AND FLOW METER**  
**NO AGGITATION**  
**(13-01-0362 REV G0)**



AT500H TREATER

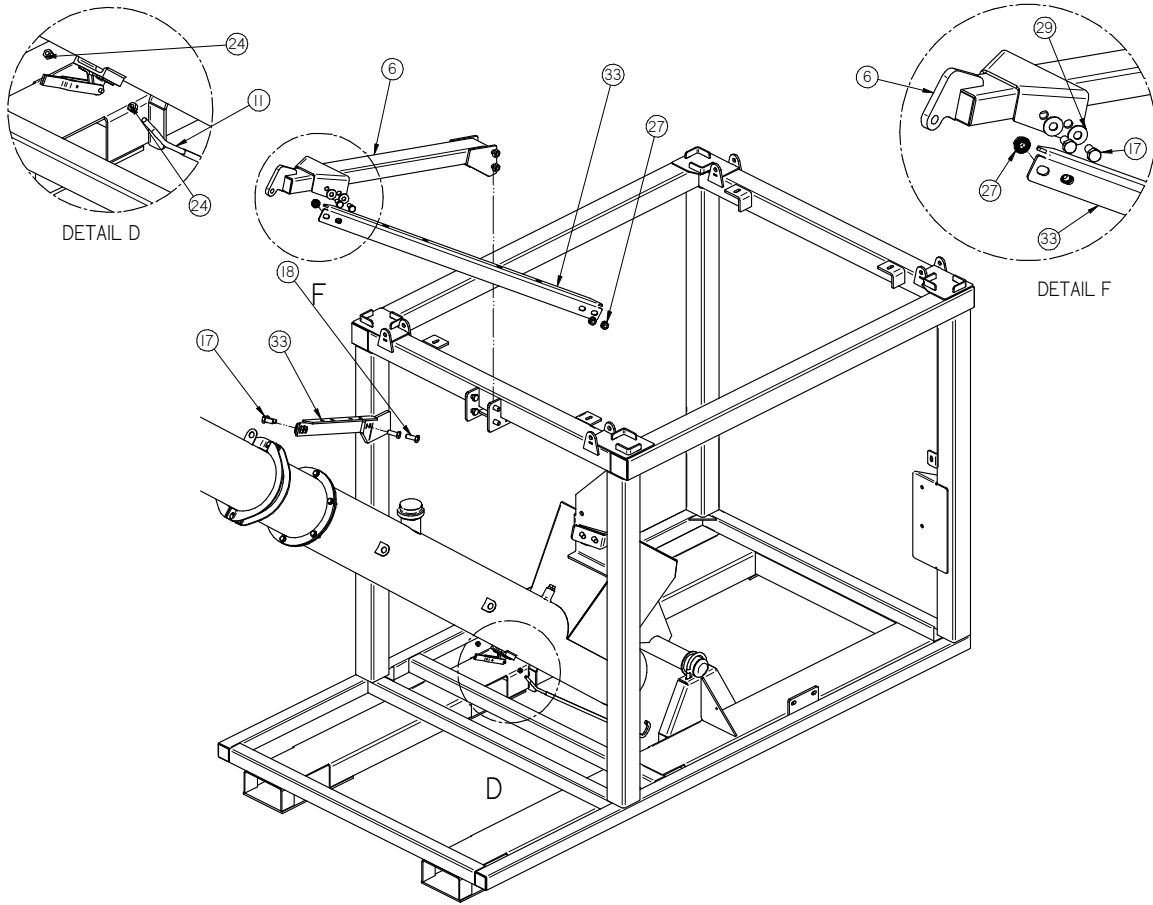
**AT500 B2B LIW TREATER WITH 15GALLON PUMP STAND AND FLOW METER**  
**NO AGGITATION**  
**(13-01-0362 REV G0)**

PART #		13-01-0362 REV G0		
Item #	Part #	Description	Qty	See Page
1	01-01-0104	MTR .33HP 1725RPM 56C 1PH TENV	1	
2	01-01-0127	MTR 3HP 1750RPM 184T TEFC 1PH	1	
3	01-08-0029	BUSH 1.125IN BORE TYPE JA	1	
4	01-08-0037	BUSH 1.000IN BORE TYPE SK	1	
5	01-08-0070	SHV 3V19.00X2 SK	1	
6	01-08-0071	SHV 3V3.0X2 JA	1	
7	01-08-0072	BELT 3VX670	2	
8	03-06-0101	PLUG TURCK RSF 44-0.5M/NPT	1	
9	03-08-0300	CONN CG .75NPT .450-.709 3235LTF	1	
10	03-08-0309	NUT NYLOC .750 NPT 8466	1	
11	03-12-0574	PNL CNTL AT500H AUTO 240V 1PH	1	
12	04-03-0254	ASSY STTC MXR & VLVS LPX TRTR QD	1	43
13	05-03-1799	WDMT PNL MNT AT500 24X24	1	
14	05-03-1801	WDMT PNL MNT SWLV SUPP	1	
15	06-01-0016	BOLT .375-16 X 1.00 ZP GR5	4	
16	06-01-0018	BOLT .375-16 X 1.50 ZP GR5	2	
17	06-01-0115	BOLT CRG .375-16 X 1.00 ZP GR5	2	
18	06-01-0124	BOLT FLG .375-16 X .750 ZP GR5	6	
19	06-01-0189	BOLT FLG .375-16 X 1.250 ZP GR5	2	
20	06-03-0014	NUT LOCK FLG .375-16 ZP GR5	16	
21	06-05-0004	WSHR FLAT .375 ZP	6	
22	06-09-0066	KNOB .375 -16 X 1. 4 LUG PLASTIC	4	
23	106234	BRACE	1	
24	13-05-0744	ASSY AT500 15G PMPSTD 2 FLMT NO AGT	1	60
25	13-08-0867	ASSY AT500H LIW PARTS 2 PMP RL SCL	1	33
26	13-11-0041	ASSY BASE AT500 144IN AUGER RL SCL	1	21



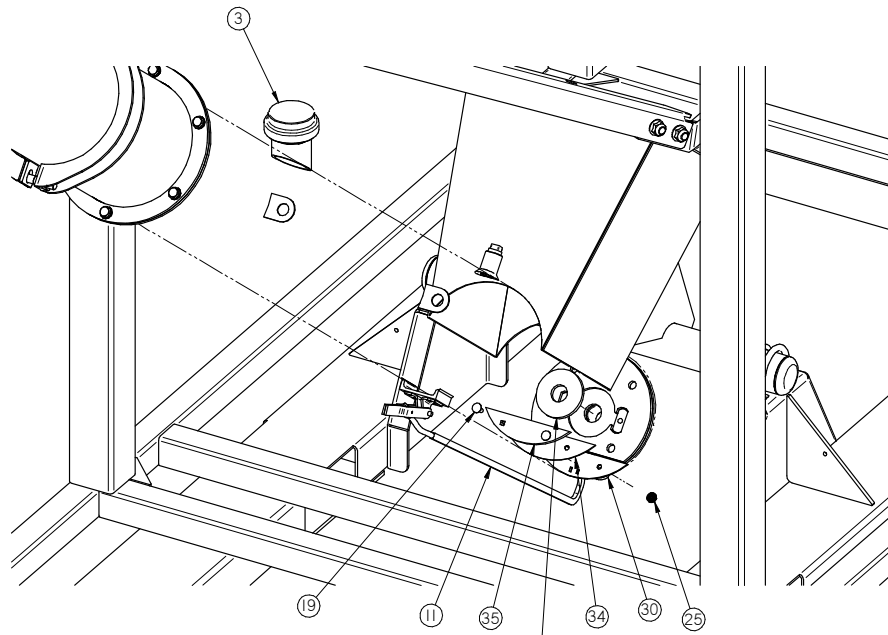
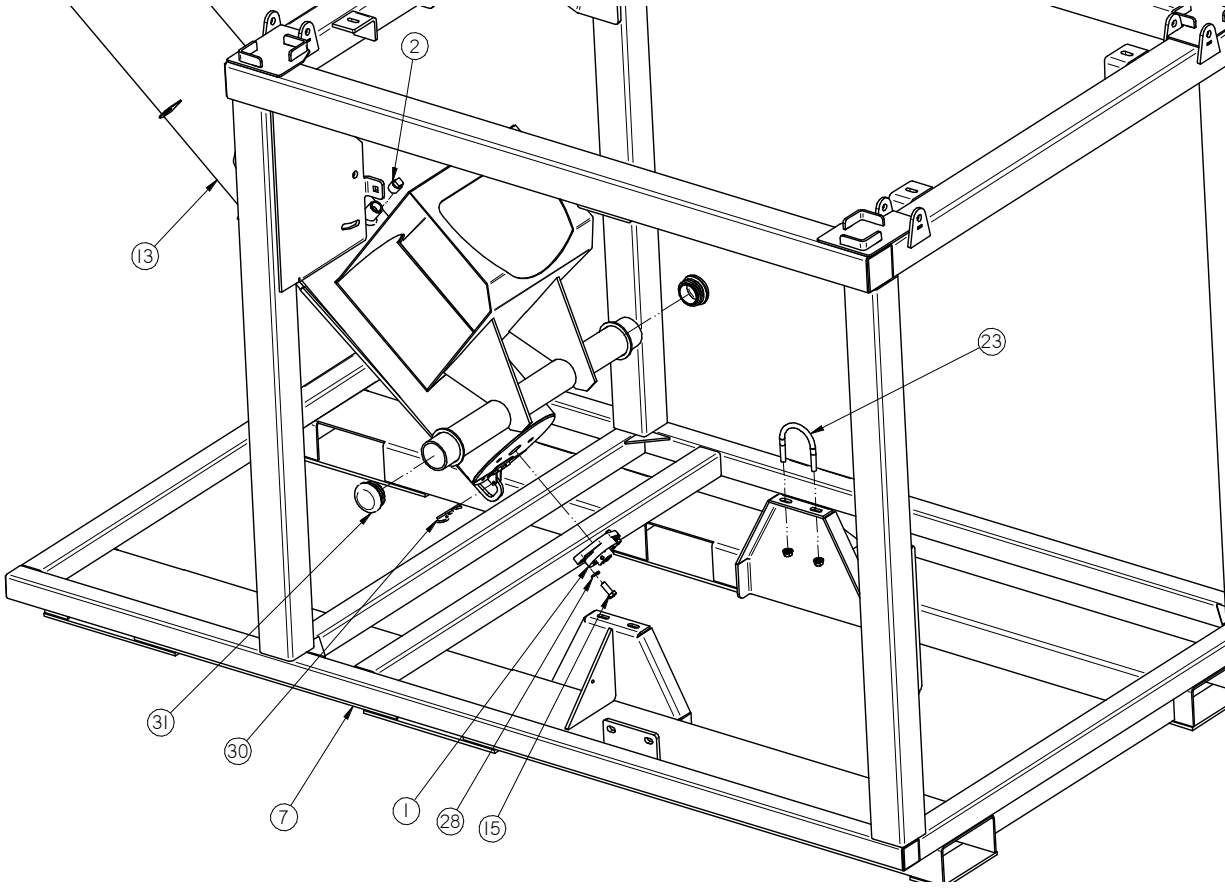
AT500H TREATER

**ASSEMBLY BASE AT500 WITH 144 INCH AUGER (13-11-0041 REV A2)**



AT500H TREATER

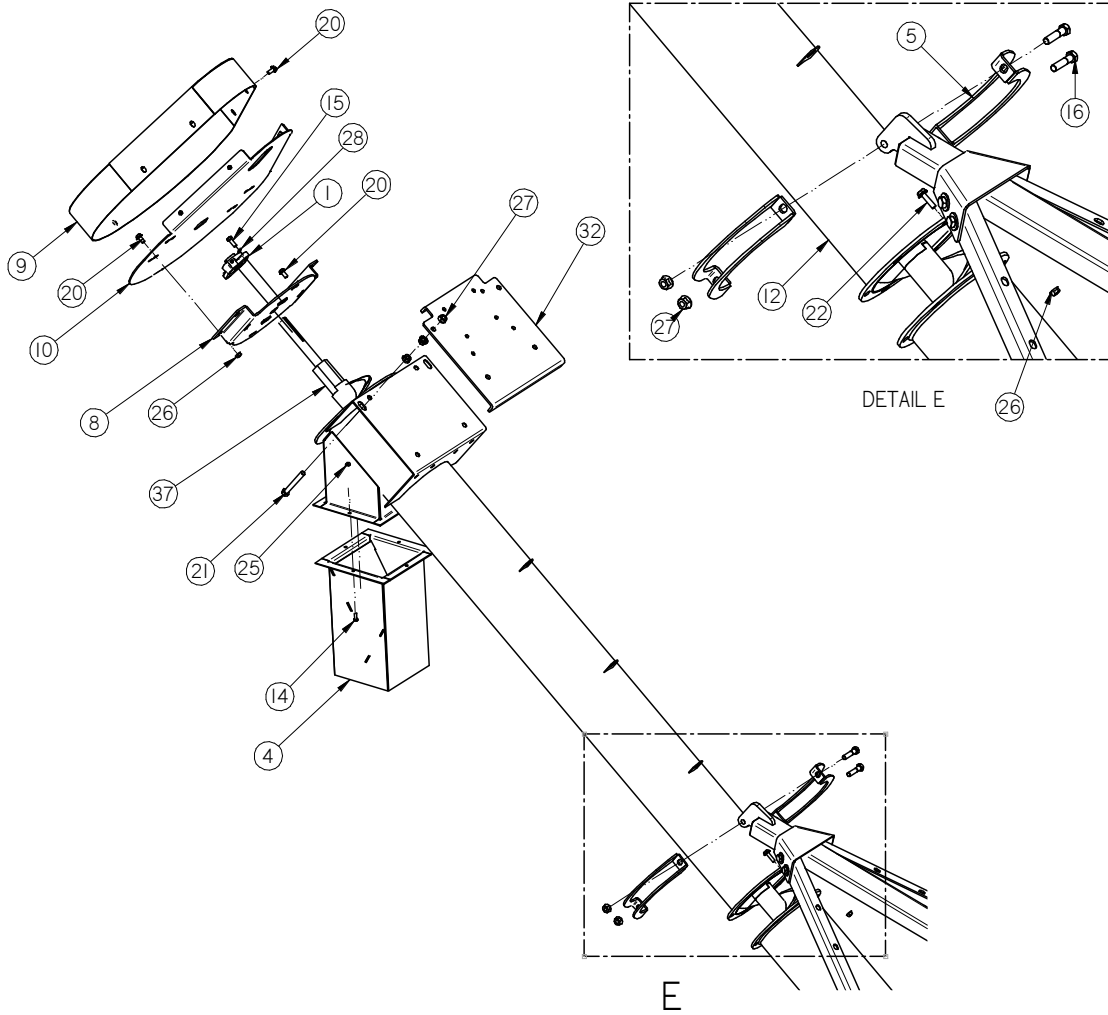
**ASSEMBLY BASE AT500 WITH 144 INCH AUGER (13-11-0041 REV A2)**



36 UHMW WASHER IS TO GO ON AUGER SHAFT BEFORE GOING THRU TUBE WDMT

AT500H TREATER

**ASSEMBLY BASE AT500 WITH 144 INCH AUGER (13-11-0041 REV A2)**



AT500H TREATER

**ASSEMBLY BASE AT500 WITH 144 INCH AUGER (13-11-0041 REV A2)**

PART #		13-11-0041 REV A2	
Item #	Part #	Description	Qty
1	01-03-0003	BRG FLG MNT 1.000ID 2BOLT	2
2	02-14-0001	FTTG PLUG SQHD .500 NPT SS	1
3	02-14-0022	FTTG END CAP 2IN NPT 125PSI ZP/GALV	1
4	05-03-0230	WDMT SEED LADDER AT500	1
5	05-03-1262	WDMT 8IN TUBE CLMP	2
6	05-03-1723	WDMT AUGER SUPPORT	1
7	05-03-1820	WDMT BASE FR AT500 144IN RL SCL	1
8	05-04-0050	WDMT AUGER DSCHG PLATE AT 500	1
9	05-06-0061	WDMT GRD CVR AT500 3HP	1
10	05-06-0062	WDMT GRD BACK AT500	1
11	05-07-1012	WDMT AT500 DOOR HOOK	1
12	05-08-0223	WDMT UPPER AUGER TUBE AT500	1
13	05-08-0639	WDMT LOWER AUGER TUBE AT500	1
14	06-01-0006	BOLT .250-20 X .750 ZP GR5	4
15	06-01-0016	BOLT .375-16 X 1.00 ZP GR5	4
16	06-01-0027	BOLT .500-13 X 2.00 ZP GR5	2
17	06-01-0069	BOLT .500-13 X 1.00 ZP GR5	4
18	06-01-0080	BOLT .500-13 X 1.25 ZP GR5	8
19	06-01-0122	BOLT CRG .250-20 X .750 ZP GR5	2
20	06-01-0124	BOLT FLG .375-16 X .750 ZP GR5	13
21	06-01-0157	BOLT .500-13 X 4.00 ZP GR5 FTH	4
22	06-01-0284	BOLT FLG .375-16 X 1.25 GR8	6
23	06-01-0287	BOLT U .375-16 X 2.50 X 3.125 ZP	2
24	06-02-0002	NUT FULL .313-18 ZP GR5	2
25	06-03-0013	NUT LOCK FLG .250-20 ZP GR5	6
26	06-03-0014	NUT LOCK FLG .375-16 ZP GR5	14
27	06-03-0015	NUT LOCK FLG .500-13 ZP GR5	26
28	06-04-0003	WSHR LOCK SPLT .375 ZP	4
29	06-05-0005	WSHR FLAT .500 ZP	4
30	06-09-0039	PIN CLIP HITCH 2.625 #11 1/8 IN ZP	1
31	06-10-0056	PLUG TBG RD RIB POLY 2.38 X .156W	2
32	100ED5	PLT MTR MNT AT 500 ADAPT	1
33	105A0A	BRACE AUGER SUPPORT	2
34	105A33	SEAL RBBR AUGER AT500	1
35	105A34	FILLER DOOR UHMW	1

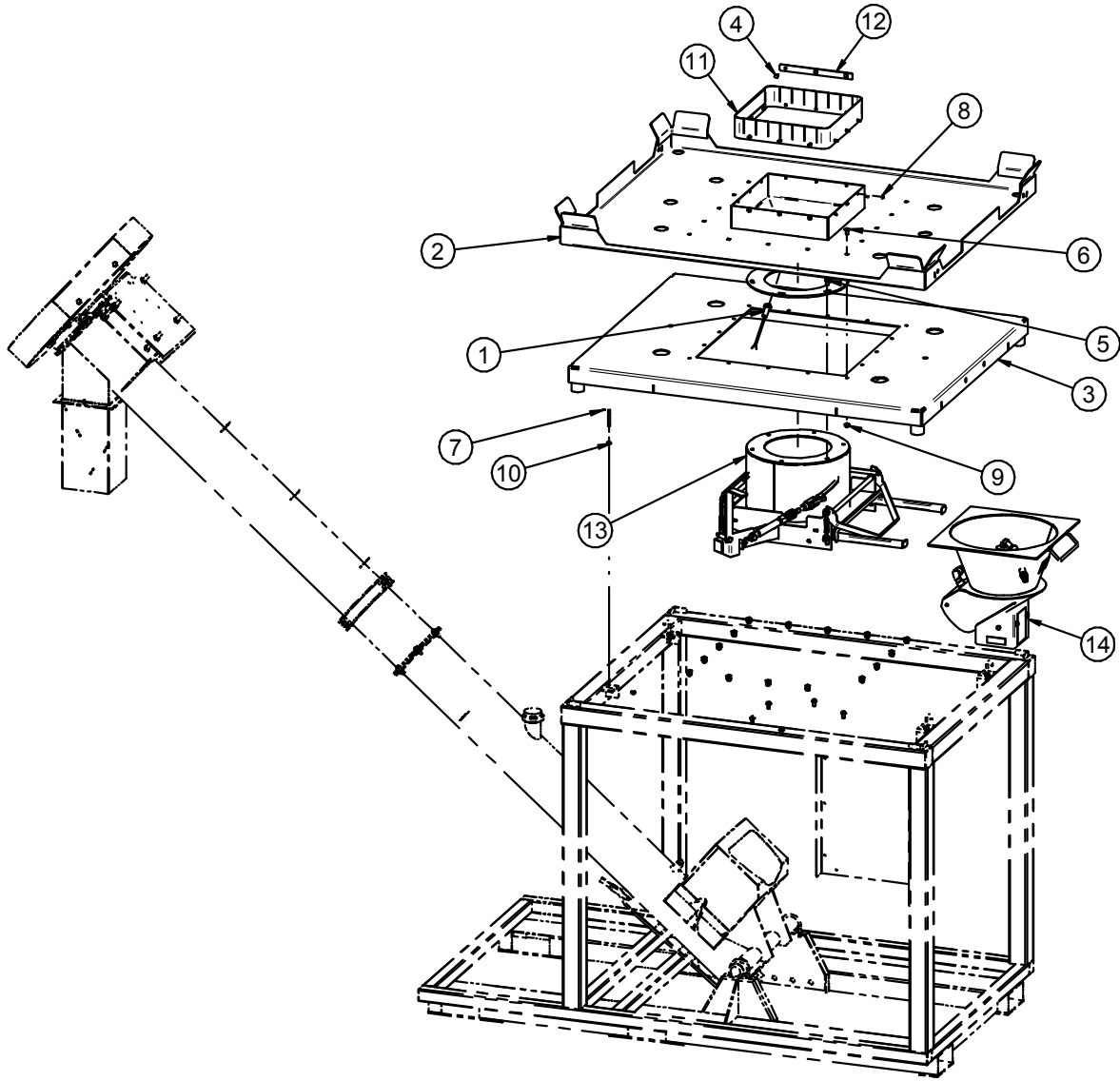
AT500H TREATER

**ASSEMBLY BASE AT500 WITH 144 INCH AUGER (13-11-0041 REV A2)**

PART #		13-11-0041 REV A2	
Item #	Part #	Description	Qty
36	105A35	WASHER AUGER UHMW	1
37	11-05-0013	ASSY POLY CUP FLIGHT W SHAFT 142LG	1

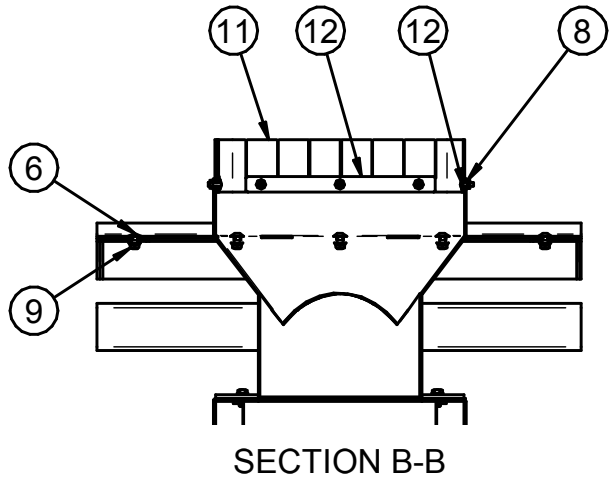
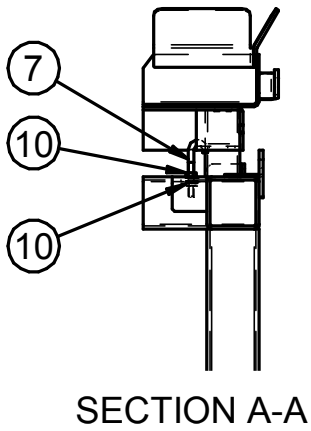
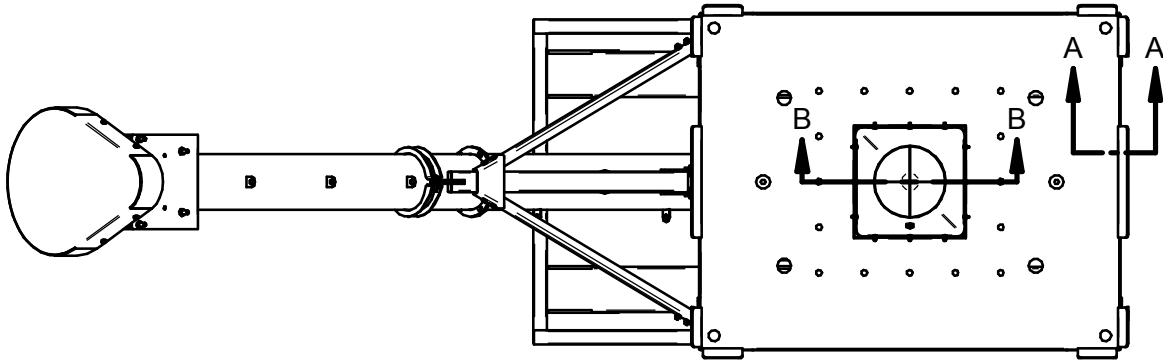
AT500H TREATER

**ASSEMBLY AT500 MANUAL BOX OF PARTS (13-08-0689 REV B1)**





**ASSEMBLY AT500 MANUAL BOX OF PARTS (13-08-0689 REV B1)**



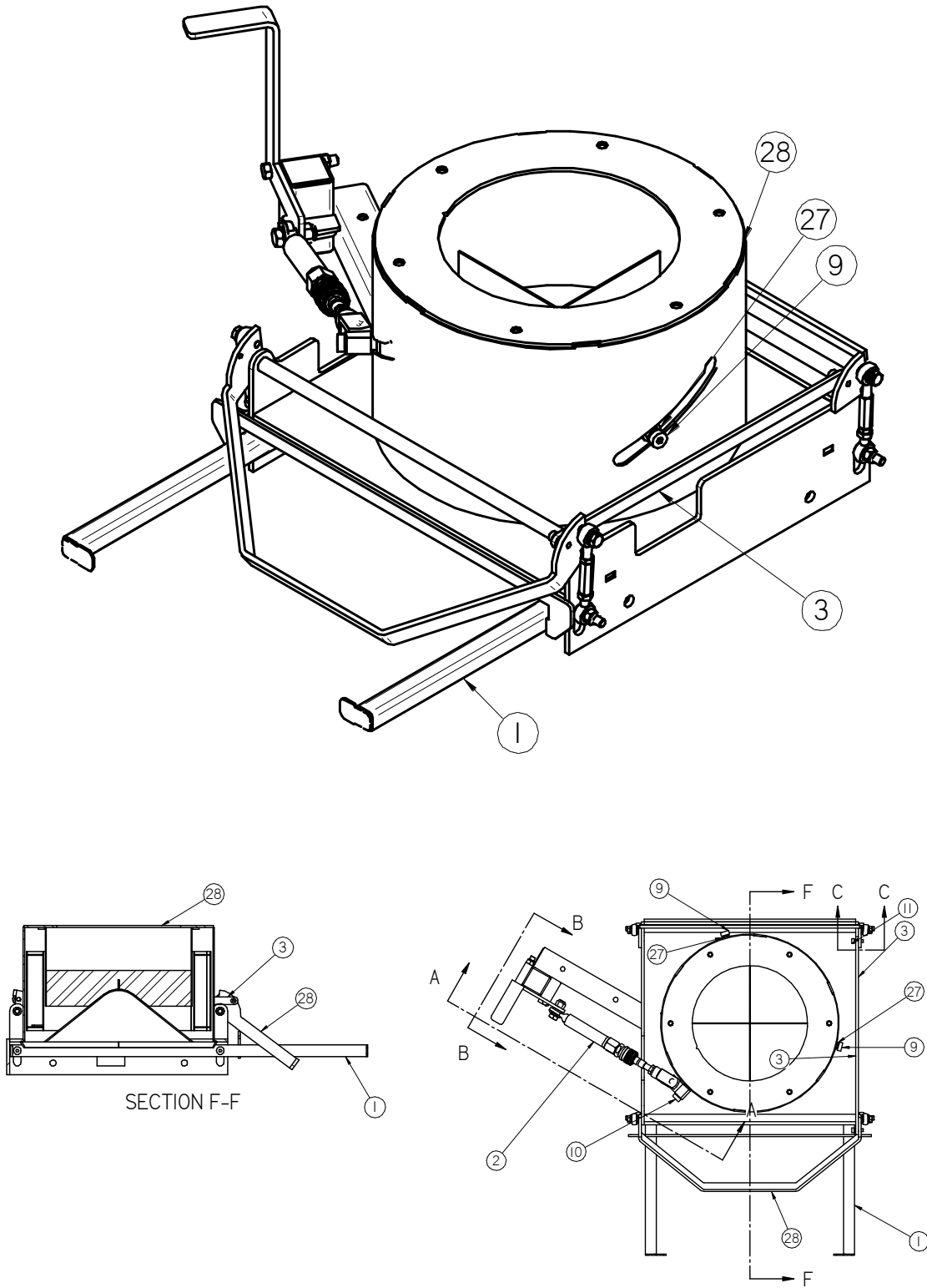
AT500H TREATER

**ASSEMBLY AT500 MANUAL BOX OF PARTS (13-08-0689 REV B1)**

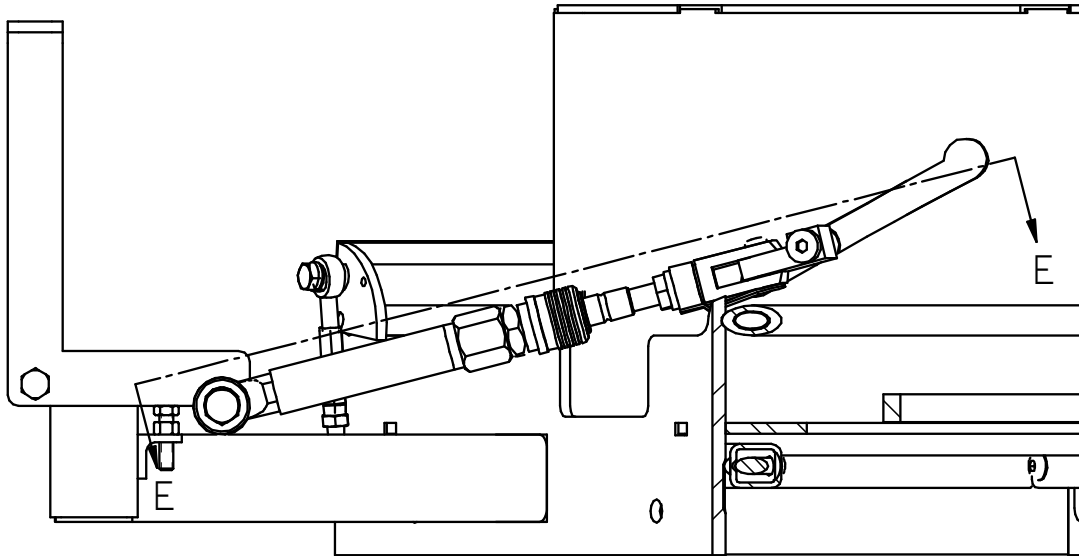
PART #		13-05-0689 REV B1		
Item #	Part #	Description	Qty	See
1	03-10-0051	SENS PROX 24-240 AC AB 875CPG8N18A2	1	
2	05-07-0958	WDMT HOPP SCALE GUIDE AT500 LIW	1	
3	05-08-0399	WDMT SUB 5 X 4 LIW SCL	1	
4	06-01-0122	BOLT CRG .250-20 X .750 ZP GR5	12	
5	06-01-0124	BOLT FLG .375-16 X .750 ZP GR5	6	
6	06-01-0153	BOLT CRG .375-16X.750 ZP SHORT NECK	16	
7	06-01-0303	BOLT J .3125-18 X 3	4	
8	06-03-0013	NUT LOCK FLG .250-20 ZP GR5	12	
9	06-03-0014	NUT LOCK FLG .375-16 ZP GR5	16	
10	06-03-0019	NUT LOCK FLG .313-18 ZP GR5	8	
11	105B36	SKIRT BOX SEAL	1	
12	105B37	PLT SKIRT RETAINER	4	
13	18-01-0287	ASSY ADJ CHMBR AT500	1	20
14	18-01-0358	ASSY ATMZR AT500 LIW CS QD	1	40

AT500H TREATER

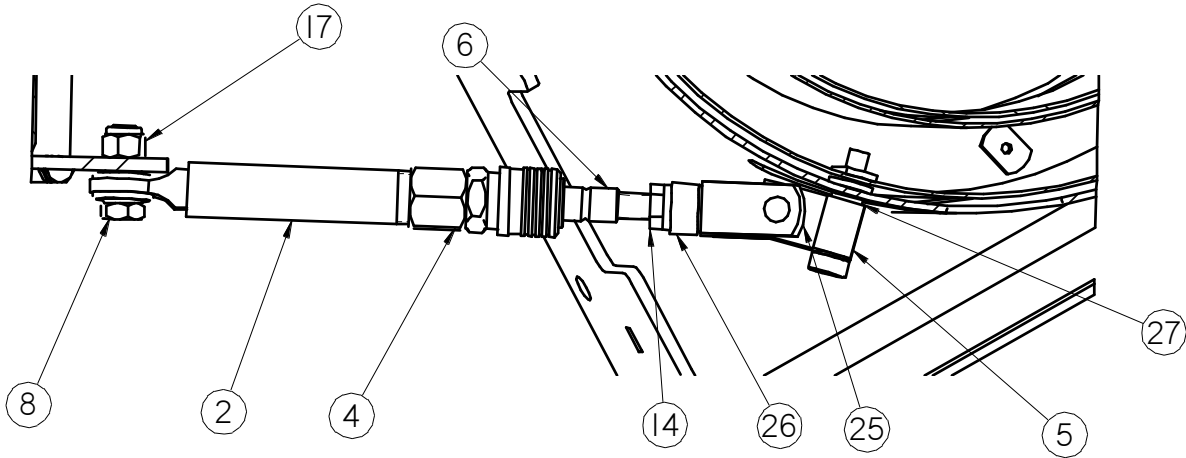
**ASSEMBLY AT500 ADJUSTABLE CHAMBER (18-01-0287 REV A3)**



**ASSEMBLY AT500 ADJUSTABLE CHAMBER (18-01-0287 REV A3)**

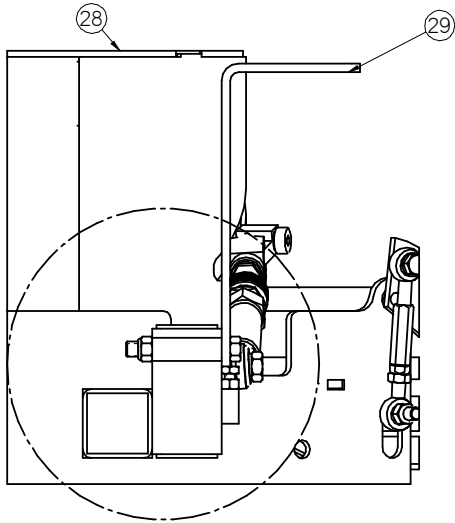


SECTION A-A

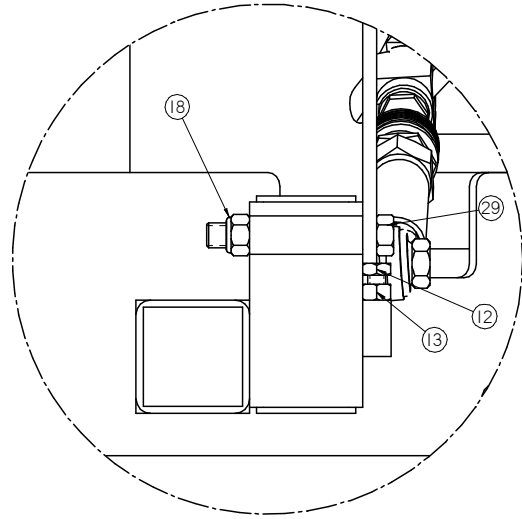


SECTION E-E

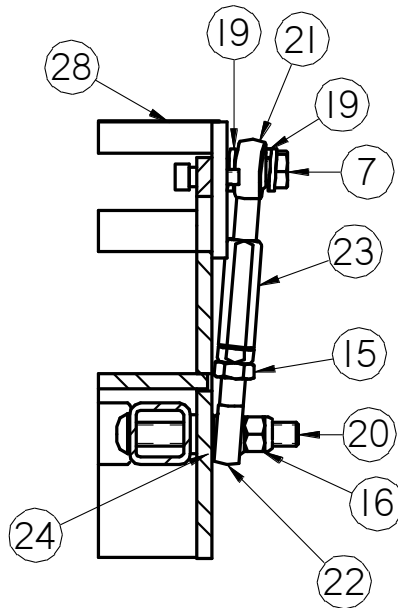
**ASSEMBLY AT500 ADJUSTABLE CHAMBER (18-01-0287 REV A3)**



D  
SECTION B-B



DETAIL D



SECTION C-C

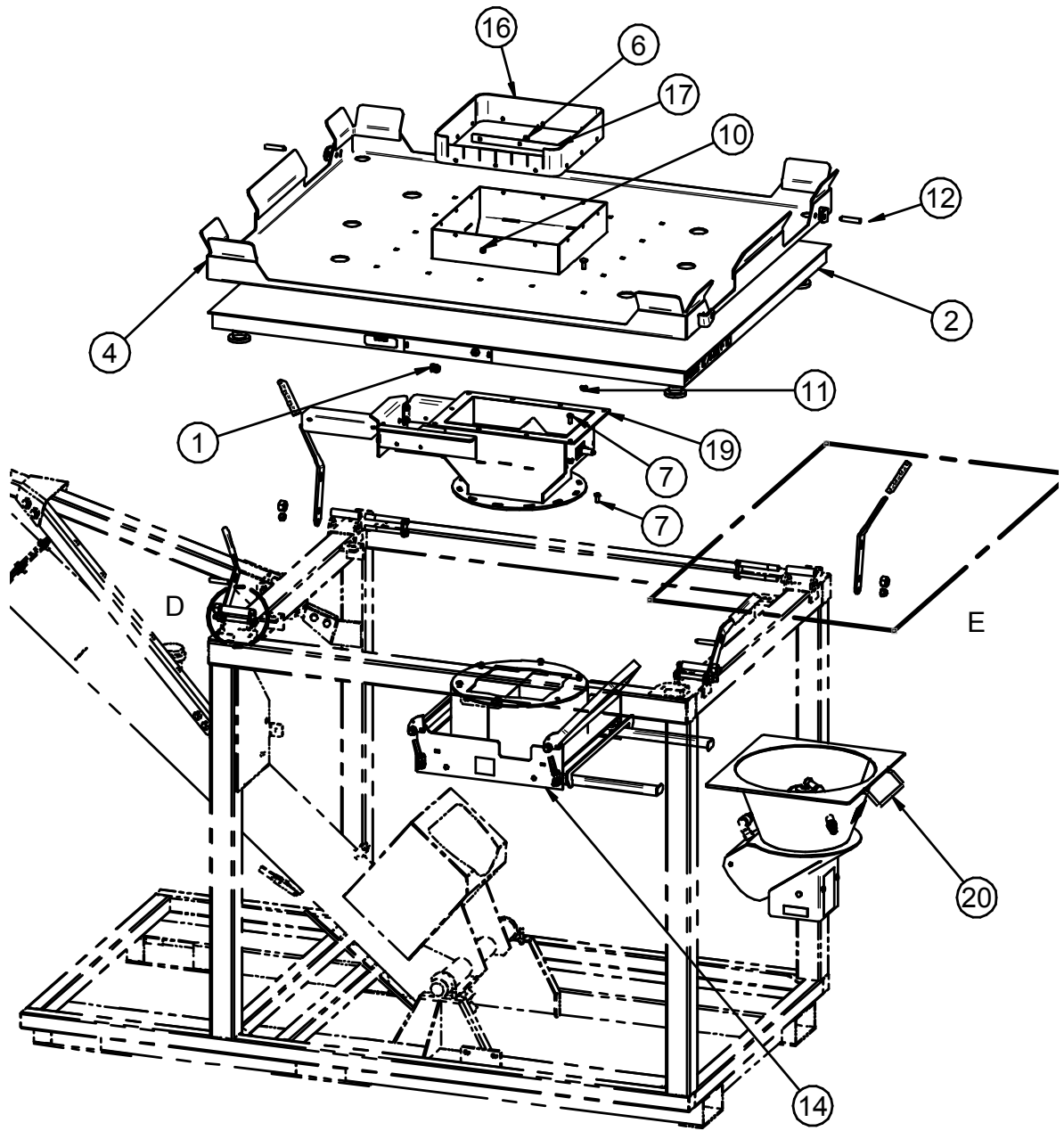
AT500H TREATER

**ASSEMBLY AT500 ADJUSTABLE CHAMBER (18-01-0287 REV A3)**

PART #		18-01-0287 REV A3	
Item #	Part #	Description	Qty
1	05-03-0336	WDMT MAIN CHMBR SUPP BRKT LX2000 SS	1
2	05-04-0012	WDMT FLOW SLV ROD END TUBE	1
3	05-10-2062	BAR ECNTRC CTNG LX2000 CS	1
4	05-11-0029	CPLG QCK CONN MACH	1
5	05-11-0030	BRKT FLOW CNTL CLVS	1
6	05-11-0408	ROD FLOW STOP ADJ AT500	1
7	06-01-0016	BOLT .375-16 X 1.00 ZP GR5	4
8	06-01-0025	BOLT .500-13 X 1.50 ZP GR5	1
9	06-01-0056	BOLT SHLD .500SHX.375-16X.500 GR5	2
10	06-01-0057	BOLT SHLD .500SHX.375-16X1.50 GR5	1
11	06-01-0081	BOLT SHLD .313SHX.250-20X.375 GR5	2
12	06-01-0102	BOLT .313-18 X 1.25 ZP GR5	1
13	06-02-0002	NUT FULL .313-18 ZP GR5	1
14	06-02-0015	NUT JAM .500-20 ZP GR5	1
15	06-02-0035	NUT JAM .375-24 ZP GR5	4
16	06-03-0003	NUT NYL LOCK .375-16 ZP GR5	4
17	06-03-0004	NUT NYL LOCK .500-13 ZP GR5	1
18	06-03-0006	NUT NYL LOCK .438-14 ZP GR5	1
19	06-04-0003	WSHR LOCK SPLT .375 ZP	8
20	06-05-0004	WSHR FLAT .375 ZP	20
21	06-06-0087	SCRW BTN SCKT HD .375-16X2.75 ZP	4
22	06-12-0002	REND .375-24 BALL LH	4
23	06-12-0003	REND .375-24 BALL RH	4
24	06-12-0006	ROD CTNG .375-24 X 2.00 LH RH FM	4
25	06-12-0007	BUSH DRILL.375ID X .625OD X .375	4
26	06-12-0008	CLVS .500-20 X .500	1
27	06-12-0009	PIN CLIP SPRING .500	1
28	06-12-0012	BUSH FLG BRZ .500ID X .625OD X .375	3
29	18-01-0060	WDMT ADJ CHMBR LPX2000 CS	1
30	18-01-0108	WDMT FLOW SLV HNDL LPX	1

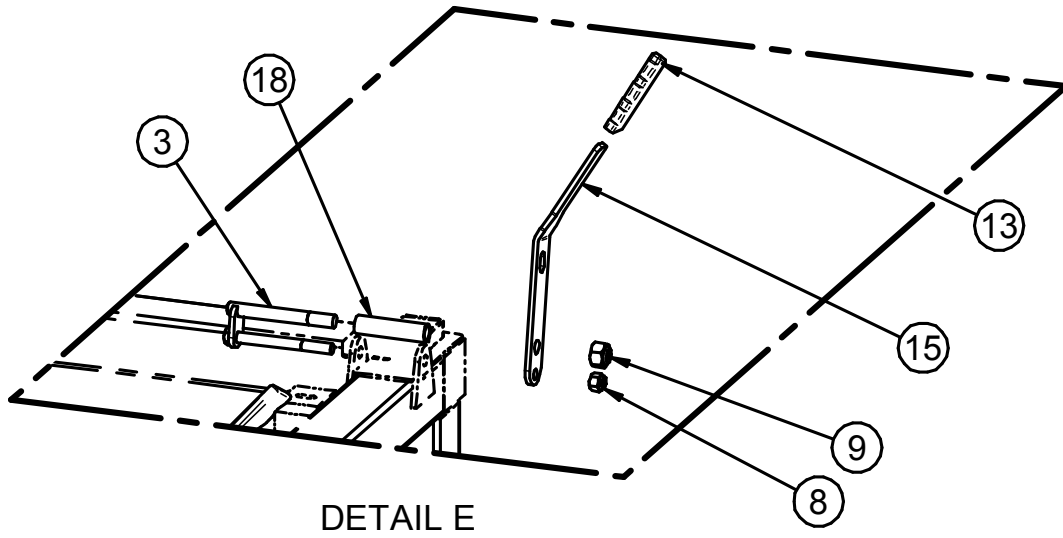
AT500H TREATER

**ASSEMBLY AT500 LIW PARTS 2 PUMP (13-08-0867 REV A2)**



AT500H TREATER

**ASSEMBLY AT500 LIW PARTS 2 PUMP (13-08-0867 REV A2)**



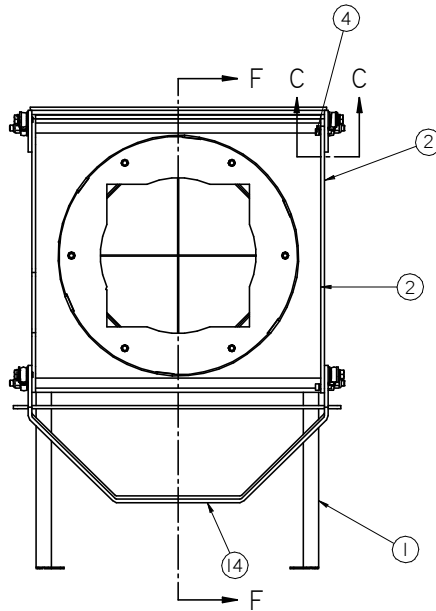
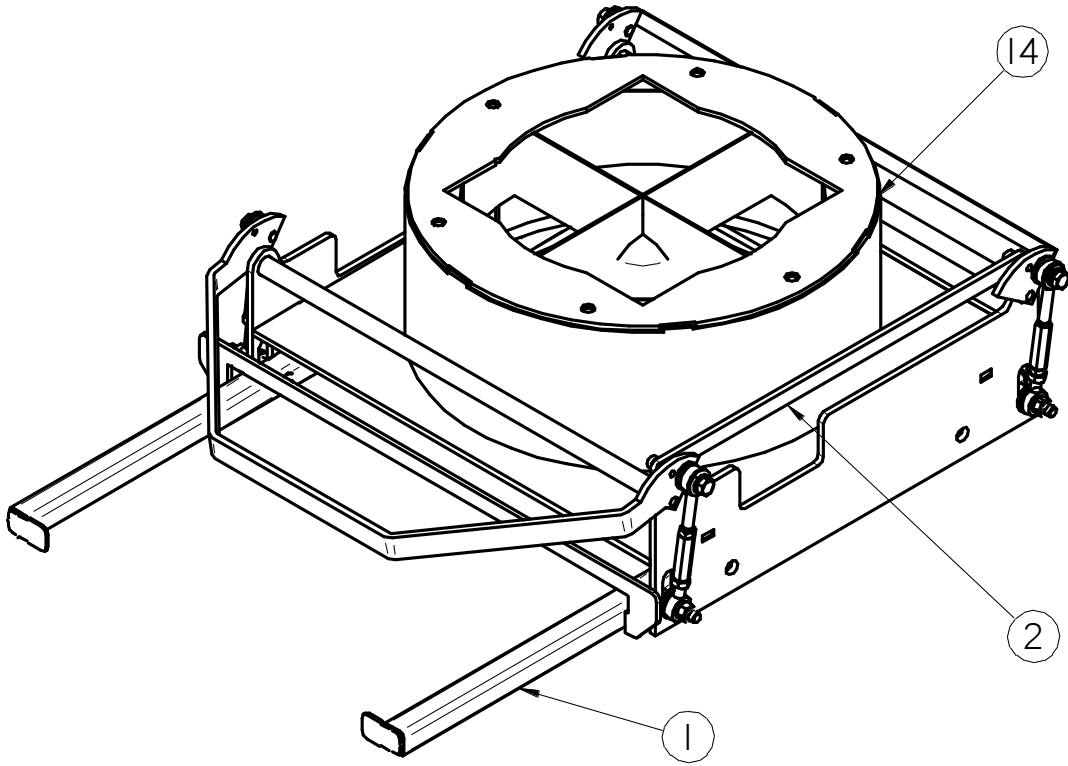


AT500H TREATER

**ASSEMBLY AT500 LIW PARTS 2 PUMP (13-08-0867 REV A2)**

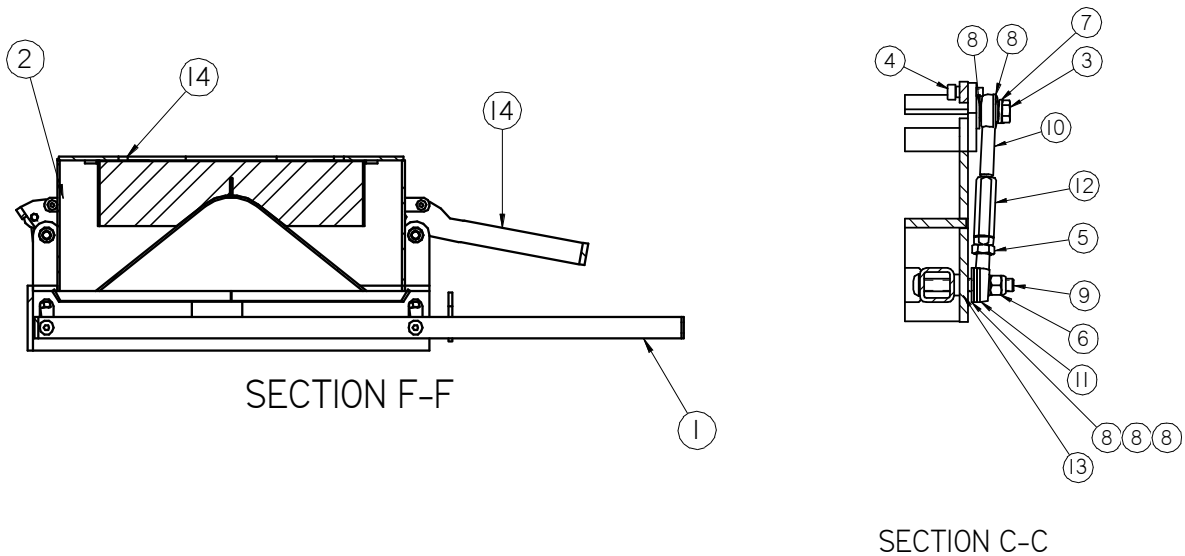
PART #		13-08-0867 REV A2		
Item #	Part #	Description	Qty	See
1	03-08-0130	PLUG STEEL 22MM	1	
2	03-19-0104	SCL 5X4FT 5K WITH CTR CUTOUT RL*	1	
3	05-03-1806	WDMT YOKE LIFT-LOCK HD	4	
4	05-07-0994	WDMT HOPP SCALE GUIDE AT500 LIW RCT	1	
5	06-01-0115	BOLT CRG .375-16 X 1.00 ZP GR5	16	
6	06-01-0122	BOLT CRG .250-20 X .750 ZP GR5	12	
7	06-01-0124	BOLT FLG .375-16 X .750 ZP GR5	16	
8	06-03-0004	NUT NYL LOCK .500-13 ZP GR5	4	
9	06-03-0005	NUT NYL LOCK .625-11 ZP	4	
10	06-03-0013	NUT LOCK FLG .250-20 ZP GR5	12	
11	06-03-0014	NUT LOCK FLG .375-16 ZP GR5	26	
12	06-09-0070	PIN SPGLD QCK REL RING GRIP 0.5DIA	4	
13	06-09-0085	CLPSBL HOPP HNDL GRIP	4	
14	105503	ASSY FLOW CHMBR SHORT	1	
15	105A14	PLT HANDLE LIFT-LOCK	4	
16	105B36	SKIRT BOX SEAL	1	
17	105B37	PLT SKIRT RETAINER	4	
18	10658C	BRG SLEEVE	4	
19	12-04-0048	ASSY LIW GATE AT500	1	38
20	18-01-0358	ASSY ATMZR AT500 LIW CS QD	1	40

AT500H TREATER  
**ASSEMBLY FLOW CHAMBER SHORT (105503 REV A2)**



AT500H TREATER

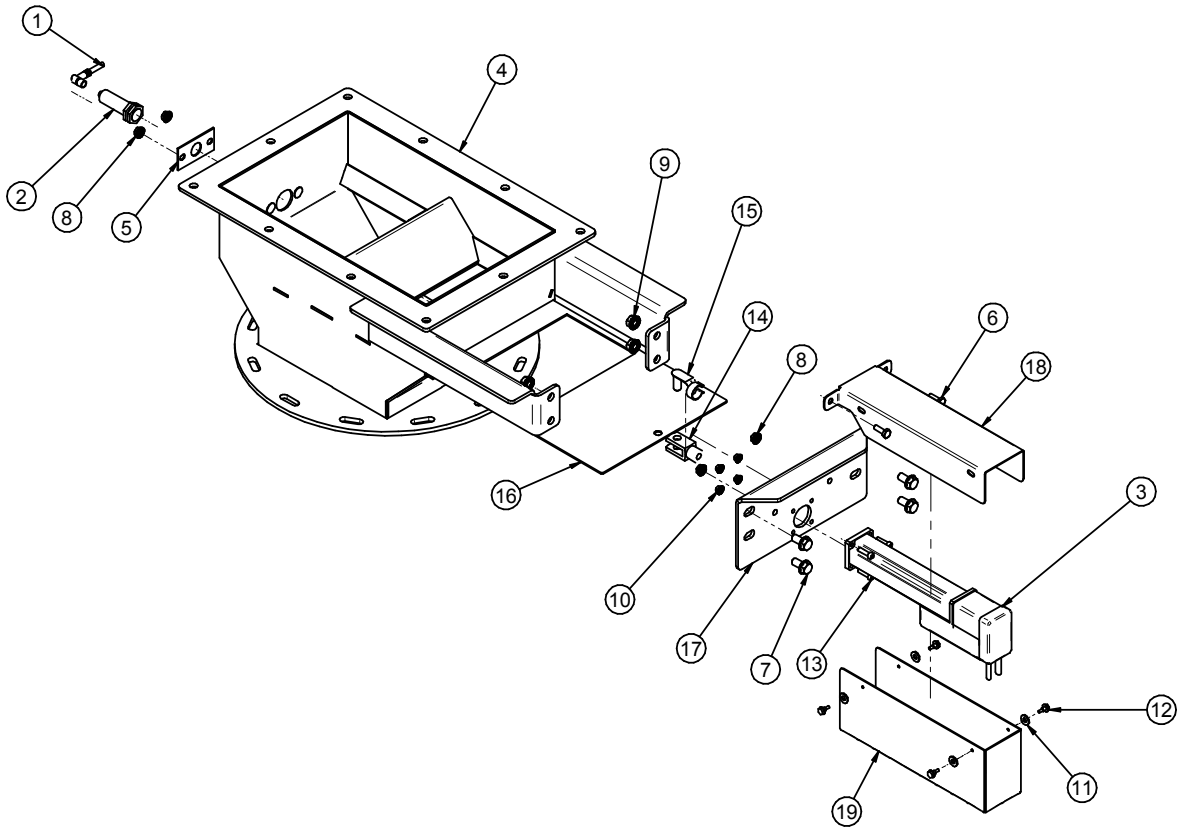
**ASSEMBLY FLOW CHAMBER SHORT (105503 REV A2)**



PART #		105503 REV A2	
Item #	Part #	Description	Qty
1	05-03-0336	WDMT MAIN CHMBR SUPP BRKT LX2000 SS	1
2	05-10-2062	BAR ECNTRC CTNG LX2000 CS	1
3	06-01-0016	BOLT .375-16 X 1.00 ZP GR5	4
4	06-01-0081	BOLT SHLD .313SHX.250-20X.375 GR5	2
5	06-02-0035	NUT JAM .375-24 ZP GR5	4
6	06-03-0003	NUT NYL LOCK .375-16 ZP GR5	4
7	06-04-0003	WSHR LOCK SPLT .375 ZP	4
8	06-05-0004	WSHR FLAT .375 ZP	20
9	06-06-0087	SCRW BTN SCKT HD .375-16X2.75 ZP	4
10	06-12-0002	REND .375-24 BALL LH	4
11	06-12-0003	REND .375-24 BALL RH	4
12	06-12-0006	ROD CTNG .375-24 X 2.00 LH RH FM	4
13	06-12-0007	BUSH DRILL.375ID X .625OD X .375	4
14	105505	WDMT FLOW CHMBR SHORT	1

AT500H TREATER

**ASSEMBLY LIW GATE (12-04-0048 REV A3)**



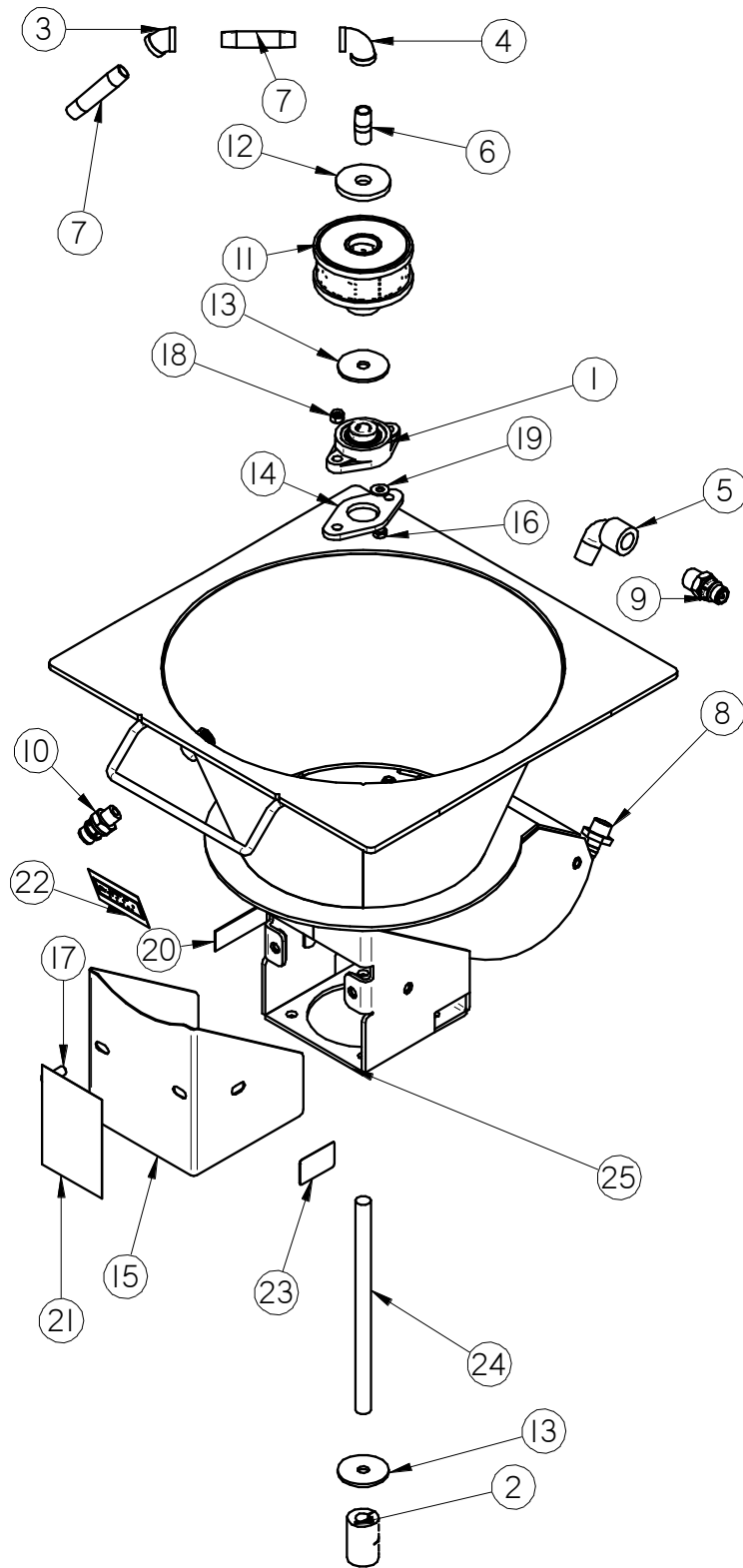
AT500H TREATER

**ASSEMBLY LIW GATE (12-04-0048 REV A3)**

PART #		12-04-0048 REV A3	
Item #	Part #	Description	Qty
1	03-08-0355	CONN TRCK PKW 3M-5-RS 4/S760/S771	1
2	03-10-0147	SENS PROX 24VDC AB QC 875CPN8NP18P3	1
3	03-17-0103	ACTR DYADIC SCN5-010-150AS03A 8M	1
4	05-03-1764	WDMT AT500 LIW GATE RECT	1
5	05-10-3316	PLT SMW PROX SW MNT	1
6	06-01-0006	BOLT .250-20 X .750 ZP GR5	2
7	06-01-0124	BOLT FLG .375-16 X .750 ZP GR5	4
8	06-03-0013	NUT LOCK FLG .250-20 ZP GR5	4
9	06-03-0014	NUT LOCK FLG .375-16 ZP GR5	4
10	06-03-0031	NUT LOCK FLG M5-0.8 GR8.8	4
11	06-05-0017	WSHR FLAT #10 ZP	4
12	06-06-0005	SCRW SDST 10-16 X .500 HH WSHR ZP	4
13	06-06-0083	SCRW SH M5-0.8 X 20MM BO	4
14	06-12-0043	CLVS 10-1.25 X 10MM	1
15	06-12-0044	PIN CLIP SPRING 10MM	1
16	105F4B	LIW GATE SLIDE	1
17	105F52	ACTR MNT PLT	1
18	105F85	CVR ACTR LIW ADJ CHMBR AT500	1
19	106459	ACTR BTM GRD	1

AT500H TREATER

**ASSEMBLY ATOMIZER AT500 LIW CS QD (18-01-0358 REV A2)**



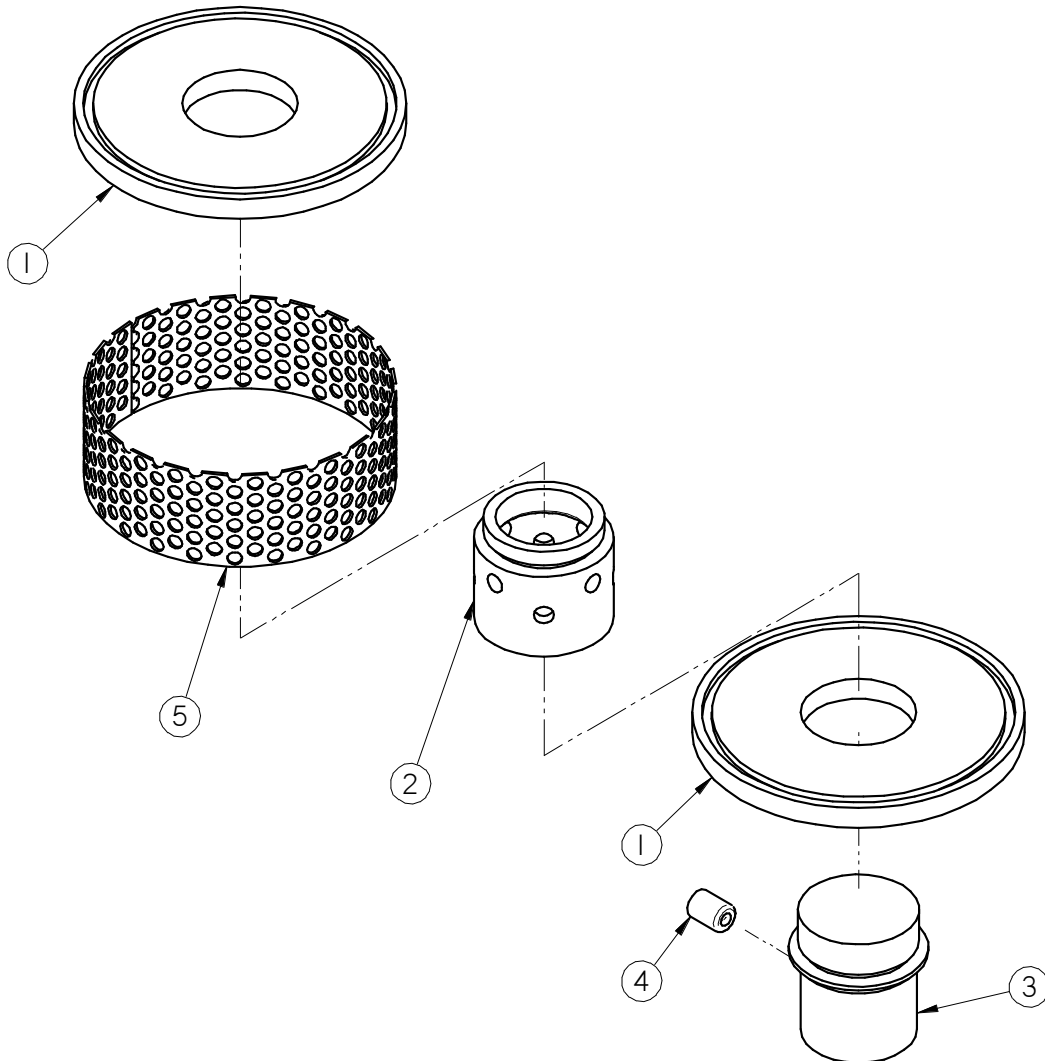
AT500H TREATER

**ASSEMBLY ATOMIZER AT500 LIW CS QD (18-01-0358 REV A2)**

PART #		18-01-0358 REV A2		
Item #	Part #	Description	Qty	See Page
1	01-03-0002	BRG FLG MNT .625ID 3.875 BASE	1	
2	01-07-0027	CPLG CLPN .625 X .625 SPLT CS	1	
3	02-06-0007	FTTG 45 DEG .375NPT SS	1	
4	02-06-0008	FTTG 90 DEG .375NPT FM SS	1	
5	02-06-0017	FTTG 90 DEG STRT .500NPT PPE BLK	1	
6	02-07-0002	FTTG NIP .375 NPT X 1.50 TBE SS	1	
7	02-07-0020	FTTG NIP .375 NPT X 3.00 TBE SS	2	
8	02-08-0007	FTTG STGHT .500HB X .500NPT ML NYL	1	
9	02-15-0014	FTTG CPLG .500 NPT QCK DISC INSERT	1	
10	02-15-0037	FTTG CPLG .375 NPT QCK DISC INSERT	1	
11	04-02-0004	ASSY ATMZR HEAD COT	1	42
12	05-10-0360	DISC STD ATMZR HEAD CVR	1	
13	05-10-0805	DISC ATMZR MTR	2	
14	05-10-2462	SEAL RBBR .625 FLG BRG	1	
15	05-10-2816	LP2000 MTR GUARD FLEX CPLG	1	
16	06-01-0102	BOLT .313-18 X 1.25 ZP GR5	2	
17	06-01-0124	BOLT FLG .375-16 X .750 ZP GR5	8	
18	06-03-0002	NUT NYL LOCK .313-18 ZP GR5	2	
19	06-05-0001	WSHR FLAT .250 ZP	2	
20	09-01-0107	LBL ATWK PATENT DECAL ROT ATOM	1	
21	09-02-0002	ATWK LBL DANGER GRD	1	
22	09-02-0004	ATWK LBL GRS 40HRS	1	
23	09-02-0013	ATWK LBL ROTATION ARROW	1	
24	101FAF	SHAFT DRV ATMZR LPX2000	1	
25	18-01-0065	WDMT ATMZR LPX2000 CS	1	



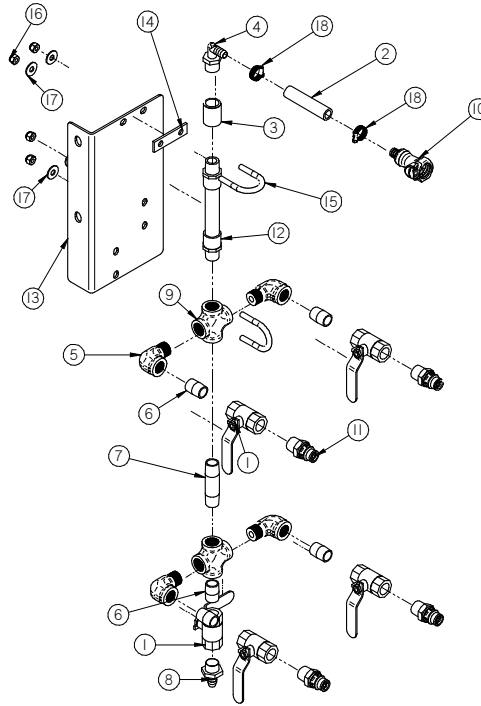
**ASSEMBLY ATOMIZER HEAD STANDARD (04-02-0004 REV A0)**



PART #		04-02-0004 REV A0	
Item #	Part #	Description	Qty
1	05-11-0014	PLT ATMZR CAP	2
2	05-11-0015	SLV ATMZR SPCR	1
3	05-11-0016	SPUD BTM DRV	1
4	06-06-0003	SCRW SCKT .375-16 X .500 SS 18-8	1
5	13-05-0032	SCRN ATMZR COT 1.375 X 12.25	1

AT500H TREATER

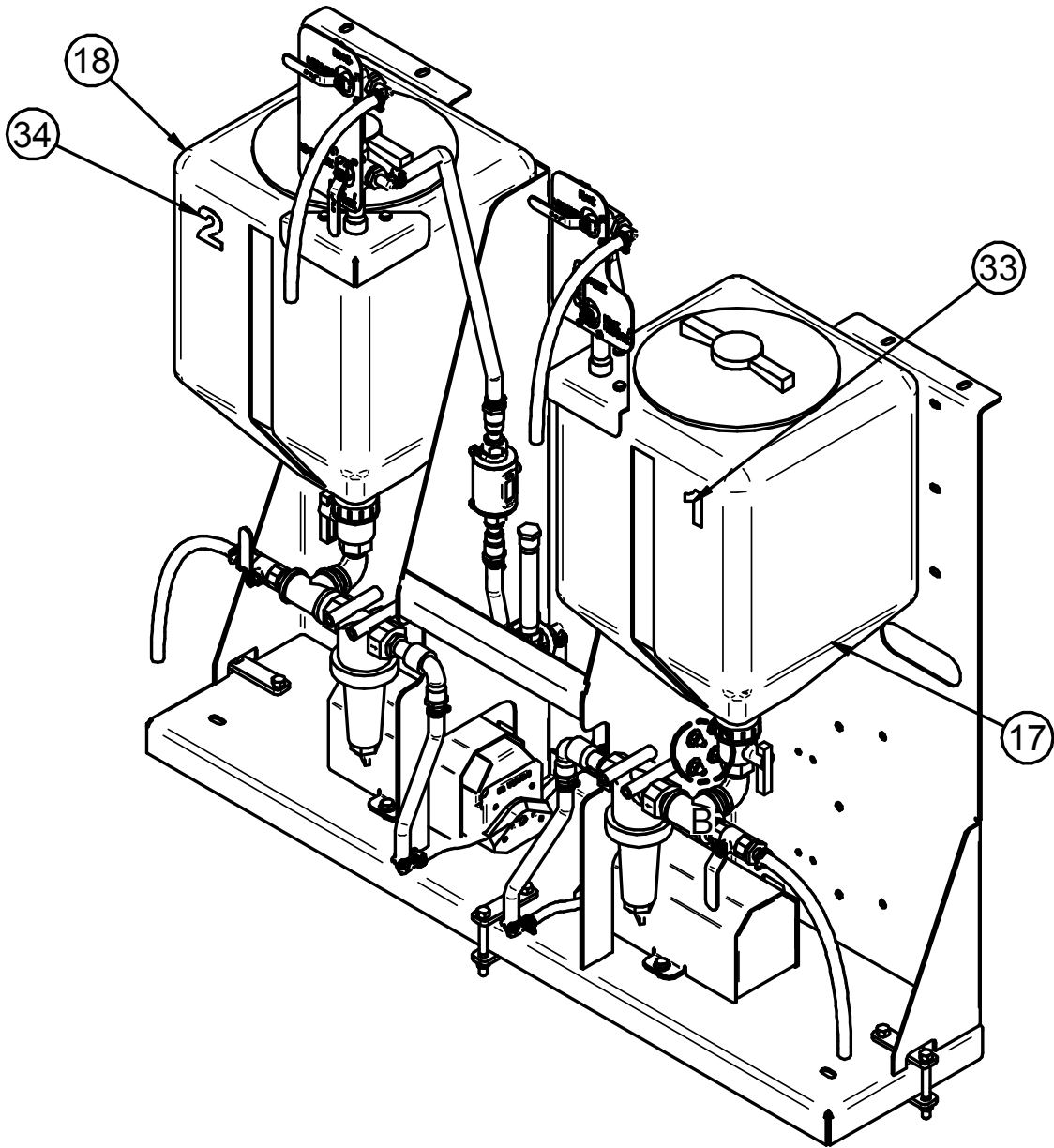
**ASSEMBLY STATIC MIXER & VALVES (04-03-0254 REV A2)**



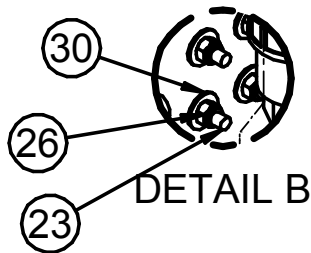
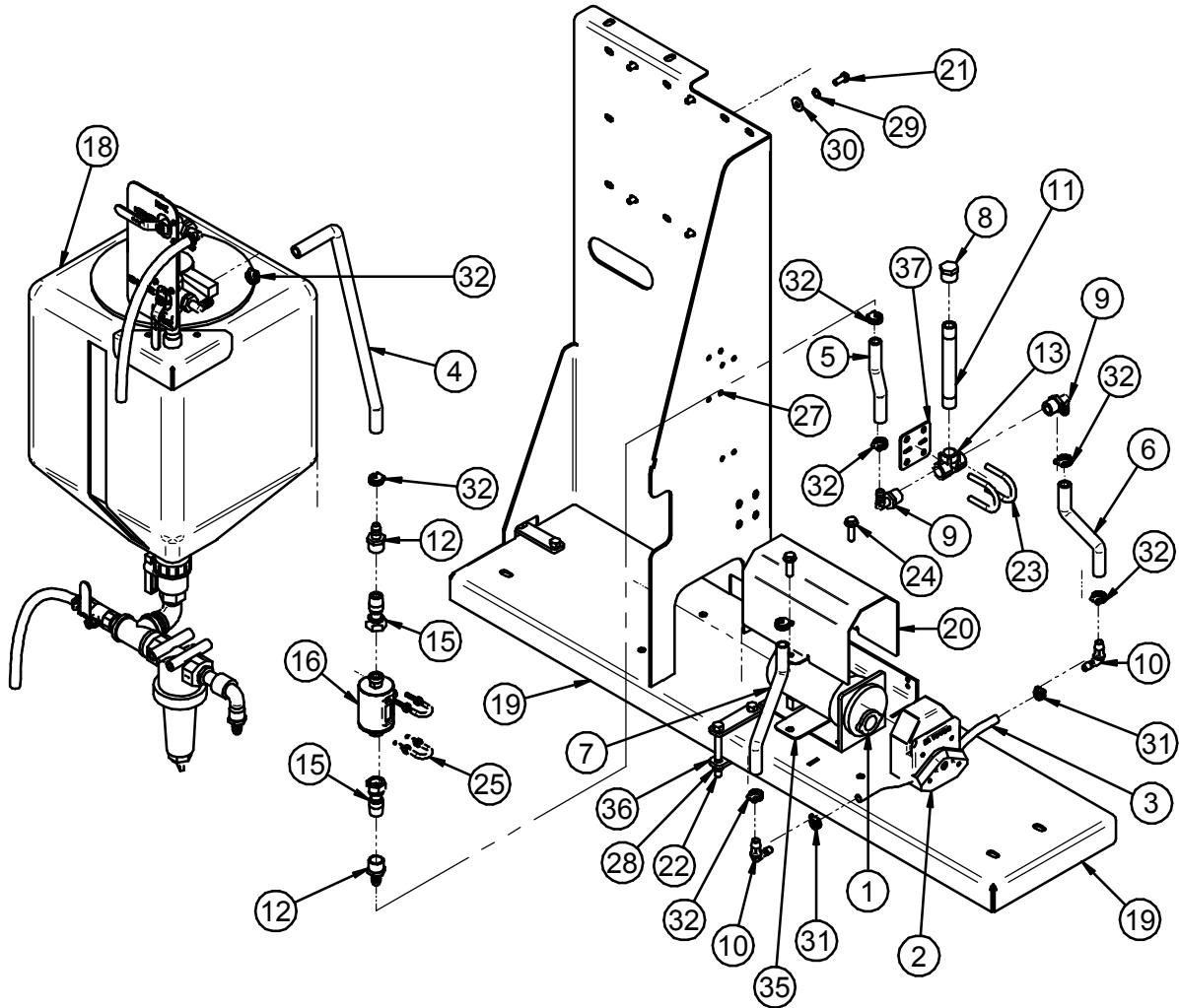
PART #		04-03-0254 REV A2	
Item #	Part #	Description	Qty
1	02-02-0006	VLV BALL .500 NPT 2WAY BRSS	5
2	02-03-0005	HOSE RNT .500 CLEAR	2.25
3	02-05-0005	FTTG CPLG .500 NPT FM SS	1
4	02-06-0010	FTTG 90 DEG .500HB X .500NPT ML NYL	1
5	02-06-0020	FTTG 90 DEG STRT.500NPTX .500NPT SS	4
6	02-07-0007	FTTG NIP .500NPTX1.125 TBE SS CLOSE	5
7	02-07-0019	FTTG NIP .500 NPT X 3.00 TBE SS	1
8	02-08-0007	FTTG STGHT .500HB X .500NPT ML NYL	1
9	02-11-0001	FTTG CROSS .500 NPT FM SS	2
10	02-15-0013	FTTG CPLG .500 HB QCK DISC BODY	1
11	02-15-0014	FTTG CPLG .500 NPT QCK DISC INSERT	4
12	04-03-0030	MXR IL PVC 6ELEMENT .500PIPE X 7.00	1
13	05-10-2891	PLT STTC MXR VLV SUPT	1
14	05-10-4277	SPCR STTC MXR MNT	1
15	06-01-0037	BOLT U .313-18 X 1.00 X .375 ZP GR5	2
16	06-03-0002	NUT NYL LOCK .313-18 ZP GR5	4
17	06-05-0003	WSHR FLAT .313 ZP	4
18	06-07-0006	CLMP HOSE .500 TO .906 X .313W ZP	2

AT500H TREATER

**ASSEMBLY AT500 DUAL PUMP STAND (13-05-0692 REV D1)**

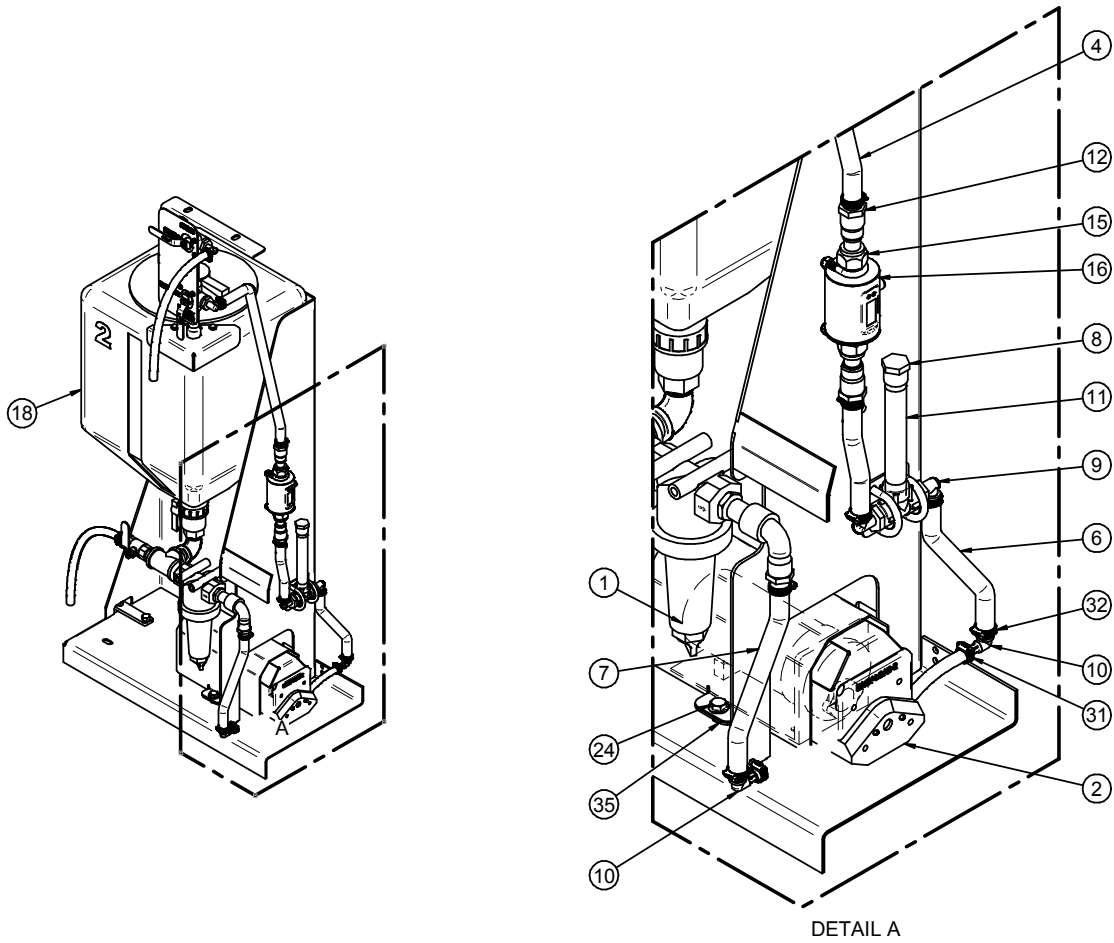


**ASSEMBLY AT500 DUAL PUMP STAND (13-05-0692 REV D1)**



AT500H TREATER

**ASSEMBLY AT500 DUAL PUMP STAND (13-05-0692 REV D1)**



AT500H TREATER

**ASSEMBLY AT500 DUAL PUMP STAND (13-05-0692 REV D1)**

PART #		13-05-0692 REV D1	
Item #	Part #	Description	Qty
1	01-01-0010	MTR .1HP 6-600RPM 90VDC	2
2	02-01-0005	PUMP HEAD PRST MF PS600RPM 956-0025	2
3	02-03-0001	HOSE MF .375 NPRN BLK - LS35 .31 ID	8
4	02-03-0005	HOSE RNT .500 CLEAR	1.5
5	02-03-0005	HOSE RNT .500 CLEAR	1.33
6	02-03-0005	HOSE RNT .500 CLEAR	1.17
7	02-03-0005	HOSE RNT .500 CLEAR	3.33
8	02-05-0086	FTTG END CAP .500 NPT BP	2
9	02-06-0010	FTTG 90 DEG .500HB X .500NPT ML NYL	4
10	02-06-0076	FTTG 90 DEG .500HB X .375HB NYL	4
11	02-07-0060	FTTG NIP .500 NPT X 6.00 TBE PVC	2
12	02-08-0026	FTTG STGHT .500HB X .500NPT FM NYL	4
13	02-09-0005	FTTG TEE .500 NPT PPE	2
14	03-08-0324	CONN TRCK 3PIN MALE BS4131-0/9	2
15	03-18-0020	FTTG ADPTR G1/2 TO 1/2NPT ML IFM	2
16	03-18-0025	FLMT IFM EFECTOR SM6000 NO NEG FLO	2
17	04-03-0294	ASSY AT500 TANK 1	1
18	04-03-0295	ASSY AT500 TANK 2	1
19	05-03-1769	WDMT AT500 PUMP FRM 2	1
20	05-06-0101	WDMT PUMP MTR COVER	2
21	06-01-0010	BOLT .313-18 X .750 ZP GR5	12
22	06-01-0022	BOLT .375-16 X 3.50 ZP GR5	6
23	06-01-0037	BOLT U .313-18 X 1.00 X .375 ZP GR5	4
24	06-01-0189	BOLT FLG .375-16 X 1.250 ZP GR5	4
25	06-01-0199	BOLT U .250-20 X 0.75 X 2.25 ZP	4
26	06-03-0002	NUT NYL LOCK .313-18 ZP GR5	8
27	06-03-0013	NUT LOCK FLG .250-20 ZP GR5	8
28	06-03-0014	NUT LOCK FLG .375-16 ZP GR5	10
29	06-04-0002	WSHR LOCK SPLT .313 ZP	12
30	06-05-0003	WSHR FLAT .313 ZP	20
31	06-07-0005	CLMP HOSE .219 TO .625 X .313W ZP	4
32	06-07-0006	CLMP HOSE .500 TO .906 X .313W ZP	16
33	09-02-0018	NUMBER 1 FROM 09-02-0018	1
34	09-02-0018	NUMBER 2 FROM 09-02-0018	1

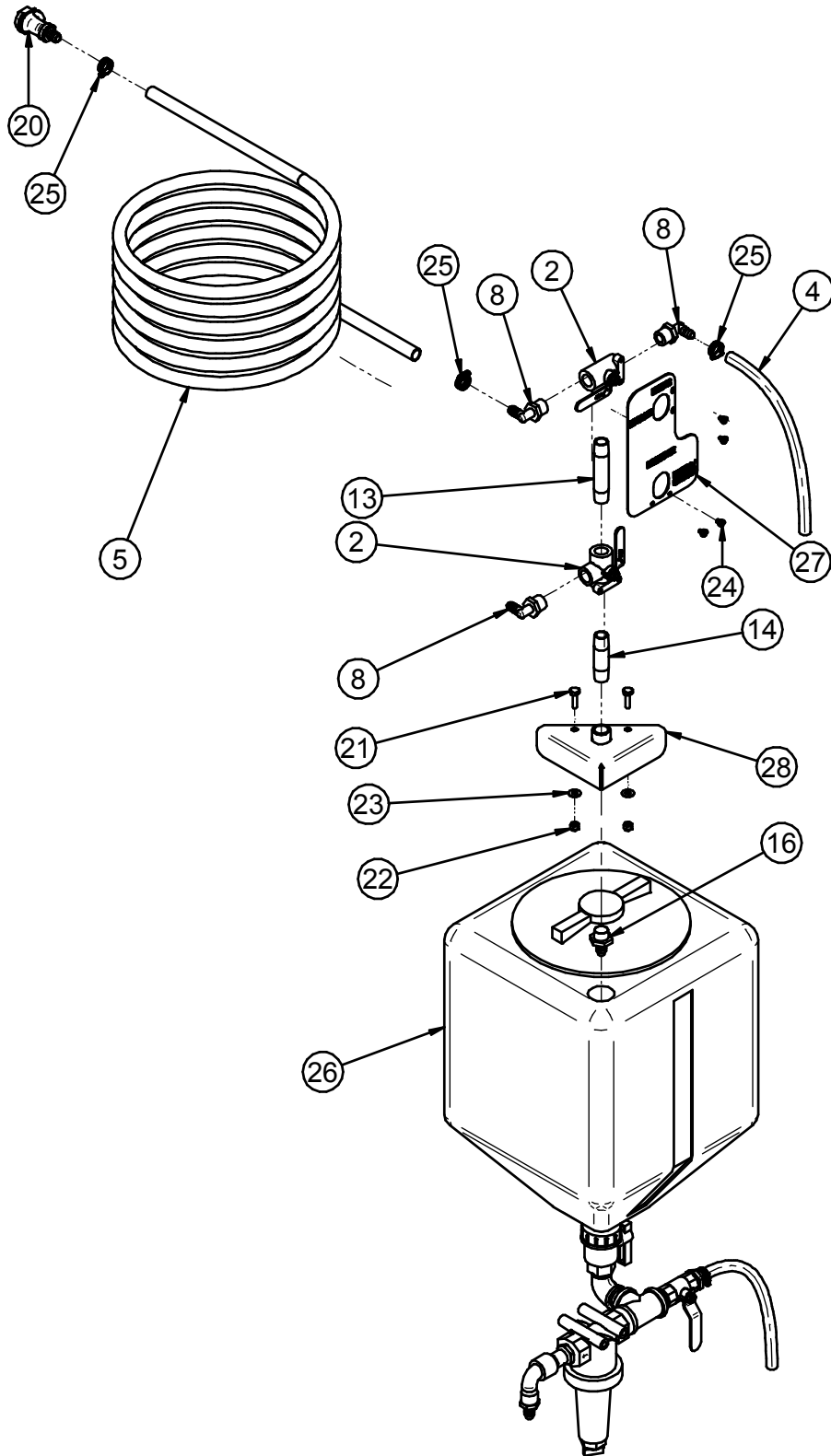
AT500H TREATER

**ASSEMBLY AT500 DUAL PUMP STAND (13-05-0692 REV D1)**

PART #		13-05-0692 REV D1	
Item #	Part #	Description	Qty
35	102276	BRKT PUMP MOUNT PUMPSTD	2
36	1054C4	MNT CLAMP	6
37	105970	PLT TEE LOCATOR	2

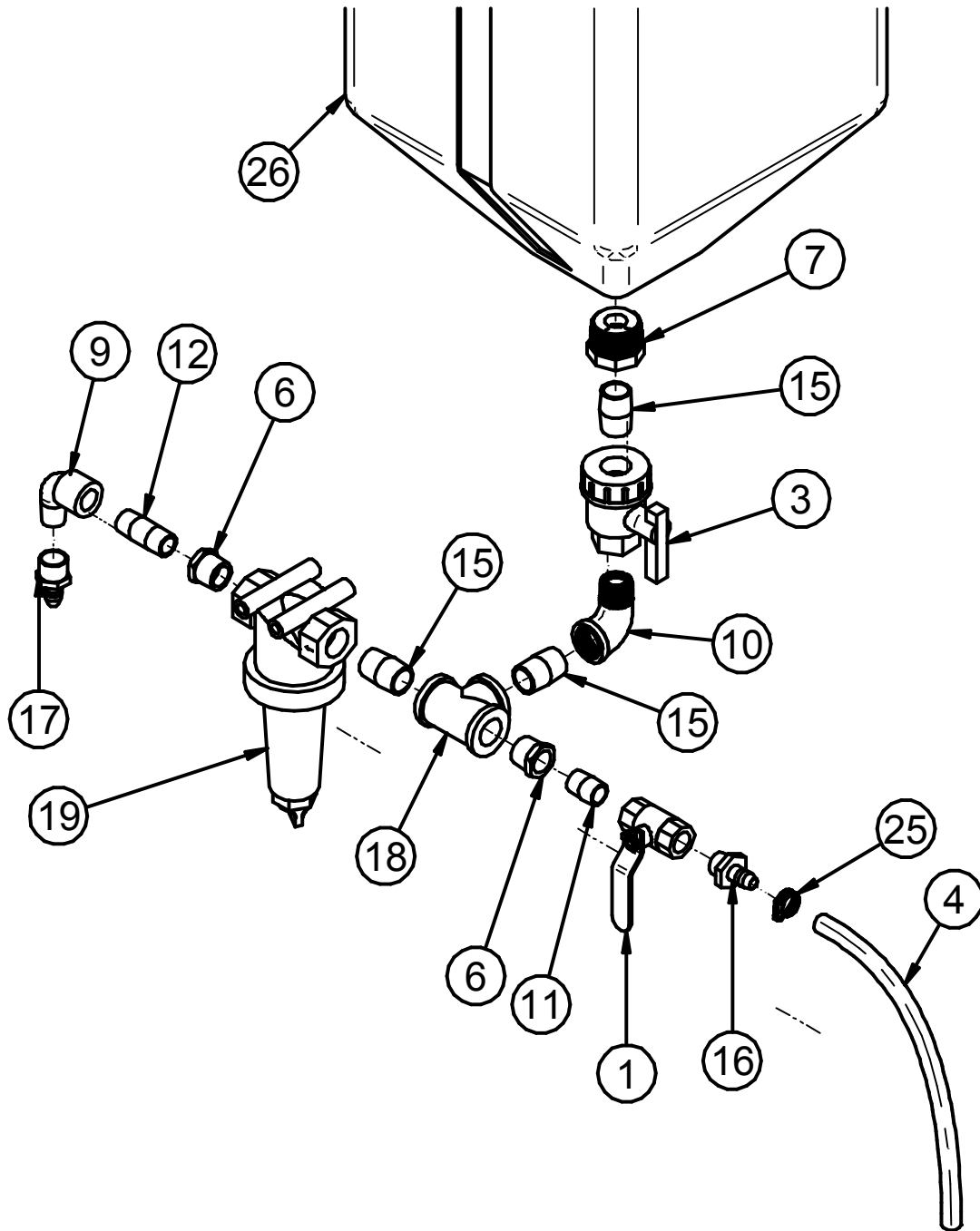


**ASSEMBLY AT500 TANK 1 10 GALLON (04-03-0294 REV A3)**



AT500H TREATER

**ASSEMBLY AT500 TANK 1 10 GALLON (04-03-0294 REV A3)**



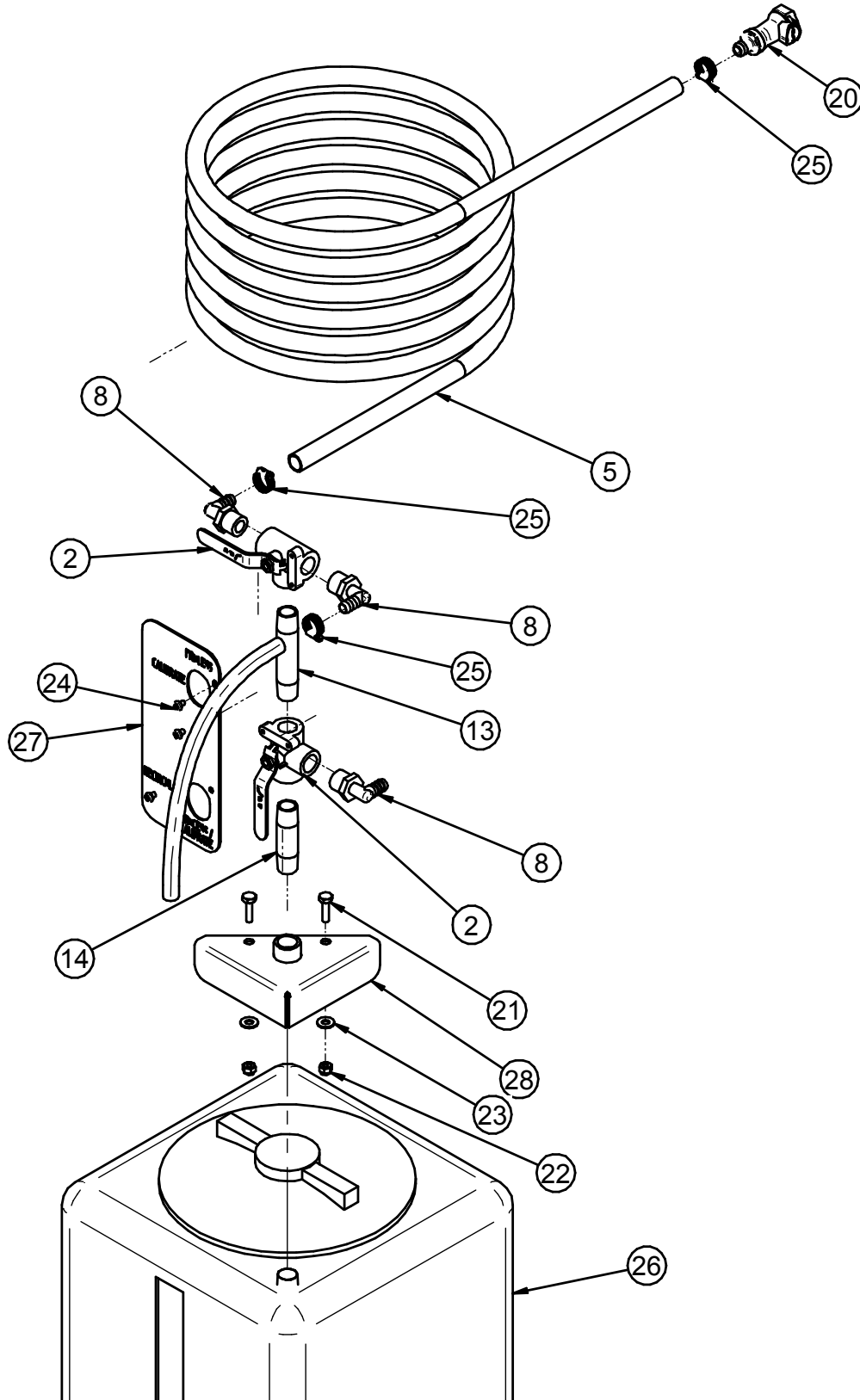
AT500H TREATER

**ASSEMBLY AT500 TANK 1 10 GALLON (04-03-0294 REV A3)**

PART #		04-03-0294 REV A3	
Item #	Part #	Description	Qty
1	02-02-0006	VLV BALL .500 NPT 2WAY BRSS	1
2	02-02-0007	VLV BALL .500 NPT 3WAY BRSS	2
3	02-02-0056	VLV BALL .750 NPT FM PLAS	1
4	02-03-0005	HOSE RNT .500 CLEAR	2
5	02-03-0005	HOSE RNT .500 CLEAR	12
6	02-04-0008	FTTG BUSH .750NPT X .500NPT SS	2
7	02-04-0051	FTTG BUSH 1.25 X .75 PVC	1
8	02-06-0010	FTTG 90 DEG .500HB X .500NPT ML NYL	3
9	02-06-0017	FTTG 90 DEG STRT .500NPT PPE BLK	1
10	02-06-0068	FTTG 90 DEG STRT .750NPT PPE BLK	1
11	02-07-0007	FTTG NIP .500NPTX1.125 TBE SS CLOSE	1
12	02-07-0010	FTTG NIP .500 NPT X 2.00 TBE SS	1
13	02-07-0013	FTTG NIP .500 NPT X 4.00 TBE SS	1
14	02-07-0019	FTTG NIP .500 NPT X 3.00 TBE SS	1
15	02-07-0070	FTTG NIP .750 NPT X 1.50 TBE SS	3
16	02-08-0007	FTTG STGHT .500HB X .500NPT ML NYL	2
17	02-08-0026	FTTG STGHT .500HB X .500NPT FM NYL	1
18	02-09-0008	FTTG TEE .750 NPT FM SS	1
19	02-12-0011	FLTR TEE PPE .750 NPT 16 MESH BANJO	1
20	02-15-0013	FTTG CPLG .500 HB QCK DISC BODY	1
21	06-01-0051	BOLT .250-20 X 1.00 SS 316	2
22	06-03-0007	NUT NYL LOCK .250-20 SS 18-8	2
23	06-05-0002	WSHR FLAT .250 X .625OD SS 18-8	2
24	06-06-0008	SCRW MACH 10-24 X .250 PHLP PNHD	4
25	06-07-0006	CLMP HOSE .500 TO .906 X .313W ZP	4
26	07-02-0041	TNK 10GAL POLY SQUARE	1
27	1054B0	VLV LBL	1
28	1054C3	WDMT VALVE MNT PLT	1

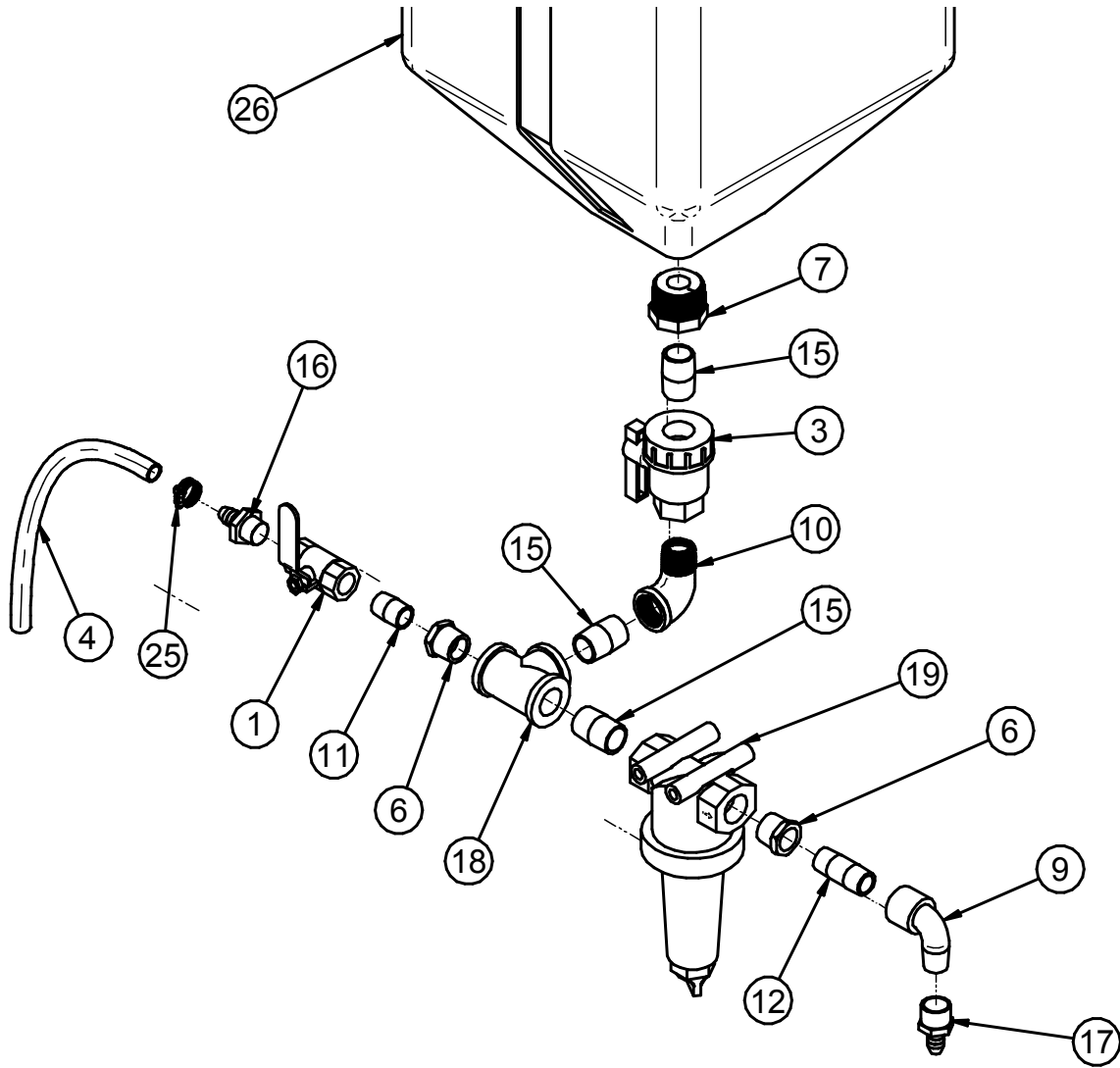
AT500H TREATER

**ASSEMBLY AT500 TANK 2 10 GALLON (04-03-0295 REV A2)**



AT500H TREATER

**ASSEMBLY AT500 TANK 2 10 GALLON (04-03-0295 REV A2)**

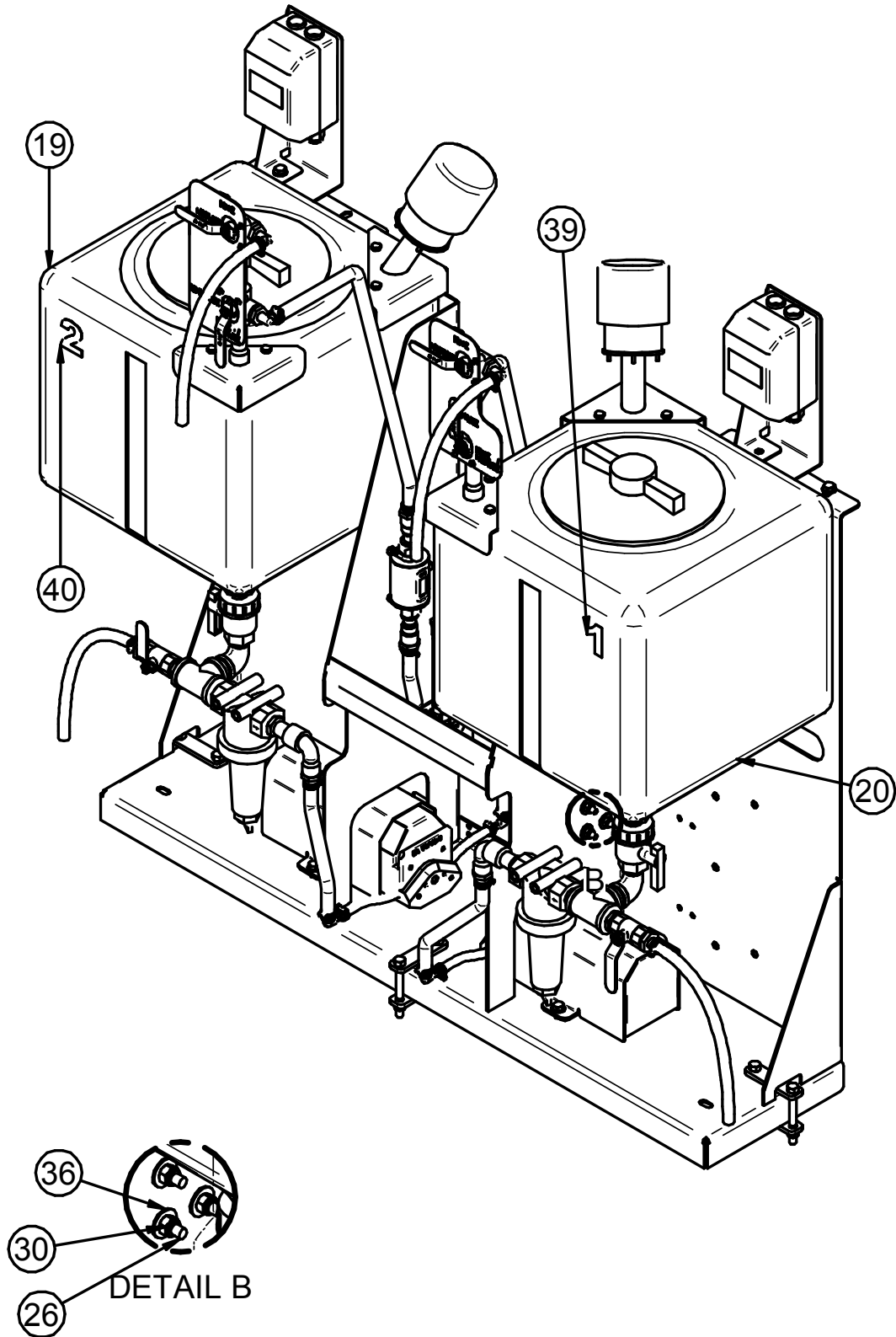


AT500H TREATER

**ASSEMBLY AT500 TANK 2 10 GALLON (04-03-0295 REV A2)**

PART #		04-03-0295 REV A2	
Item #	Part #	Description	Qty
1	02-02-0006	VLV BALL .500 NPT 2WAY BRSS	1
2	02-02-0007	VLV BALL .500 NPT 3WAY BRSS	2
3	02-02-0056	VLV BALL .750 NPT FM PLAS	1
4	02-03-0005	HOSE RNT .500 CLEAR	2
5	02-03-0005	HOSE RNT .500 CLEAR	12
6	02-04-0008	FTTG BUSH .750NPT X .500NPT SS	2
7	02-04-0051	FTTG BUSH 1.25 X .75 PVC	1
8	02-06-0010	FTTG 90 DEG .500HB X .500NPT ML NYL	3
9	02-06-0017	FTTG 90 DEG STRT .500NPT PPE BLK	1
10	02-06-0068	FTTG 90 DEG STRT .750NPT PPE BLK	1
11	02-07-0007	FTTG NIP .500NPTX1.125 TBE SS CLOSE	1
12	02-07-0010	FTTG NIP .500 NPT X 2.00 TBE SS	1
13	02-07-0013	FTTG NIP .500 NPT X 4.00 TBE SS	1
14	02-07-0019	FTTG NIP .500 NPT X 3.00 TBE SS	1
15	02-07-0070	FTTG NIP .750 NPT X 1.50 TBE SS	3
16	02-08-0007	FTTG STGHT .500HB X .500NPT ML NYL	2
17	02-08-0026	FTTG STGHT .500HB X .500NPT FM NYL	1
18	02-09-0008	FTTG TEE .750 NPT FM SS	1
19	02-12-0011	FLTR TEE PPE .750 NPT 16 MESH BANJO	1
20	02-15-0013	FTTG CPLG .500 HB QCK DISC BODY	1
21	06-01-0051	BOLT .250-20 X 1.00 SS 316	2
22	06-03-0007	NUT NYL LOCK .250-20 SS 18-8	2
23	06-05-0002	WSHR FLAT .250 X .625OD SS 18-8	2
24	06-06-0008	SCRW MACH 10-24 X .250 PHLP PNHD	4
25	06-07-0006	CLMP HOSE .500 TO .906 X .313W ZP	4
26	07-02-0041	TNK 10GAL POLY SQUARE	1
27	1054C1	VLV LBL	1
28	1054C3	WDMT VALVE MNT PLT	1

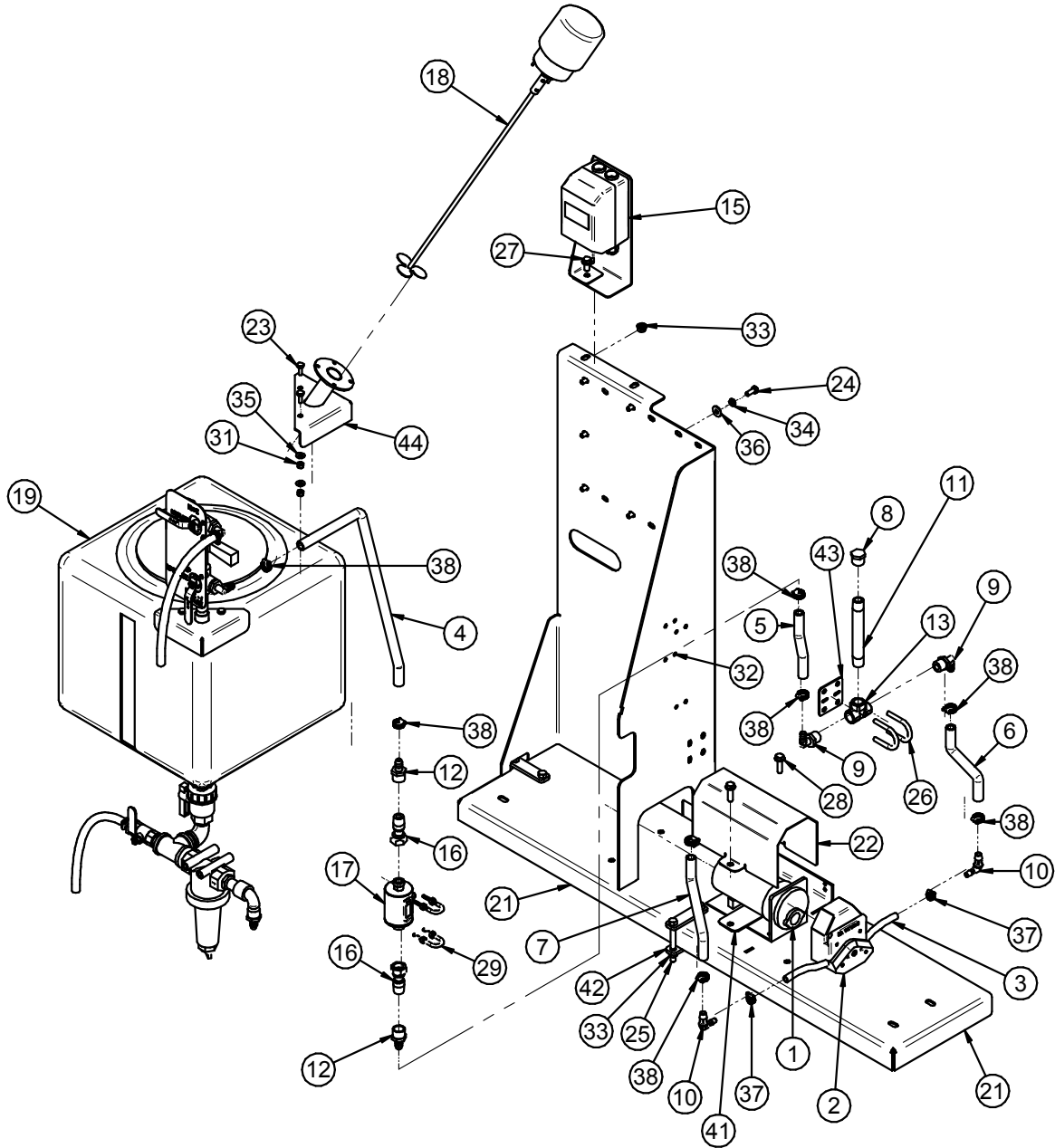
**ASSEMBLY AT500 DUAL PUMP STAND 15 GALLON (13-05-0726 REV A1)**





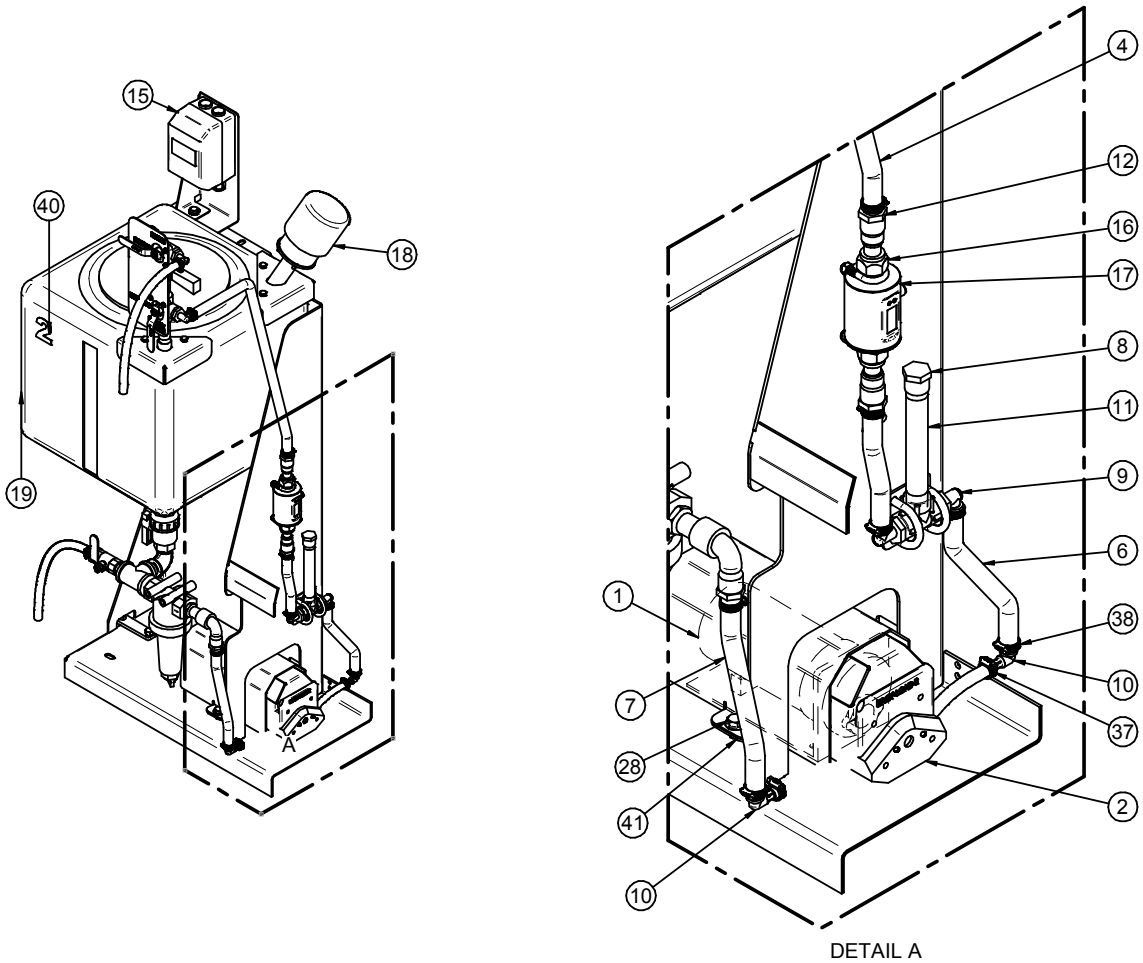
AT500H TREATER

**ASSEMBLY AT500 DUAL PUMP STAND 15 GALLON (13-05-0726 REV A1)**



AT500H TREATER

**ASSEMBLY AT500 DUAL PUMP STAND 15 GALLON (13-05-0726 REV A1)**



AT500H TREATER

**ASSEMBLY AT500 DUAL PUMP STAND 15 GALLON (13-05-0726 REV A1)**

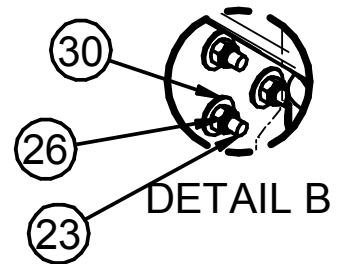
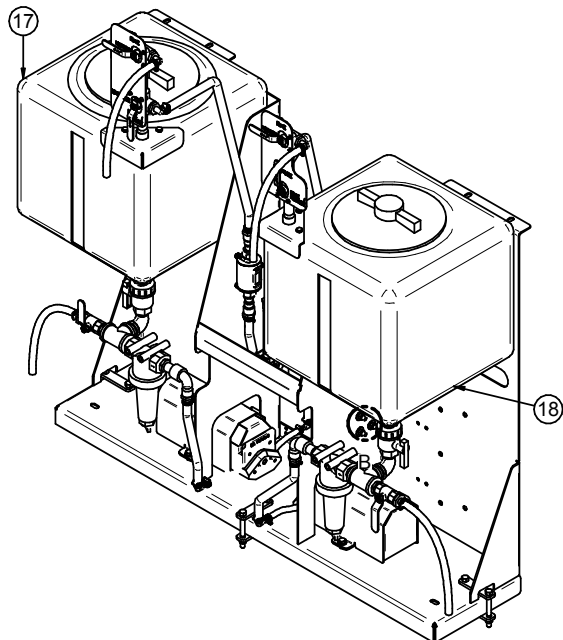
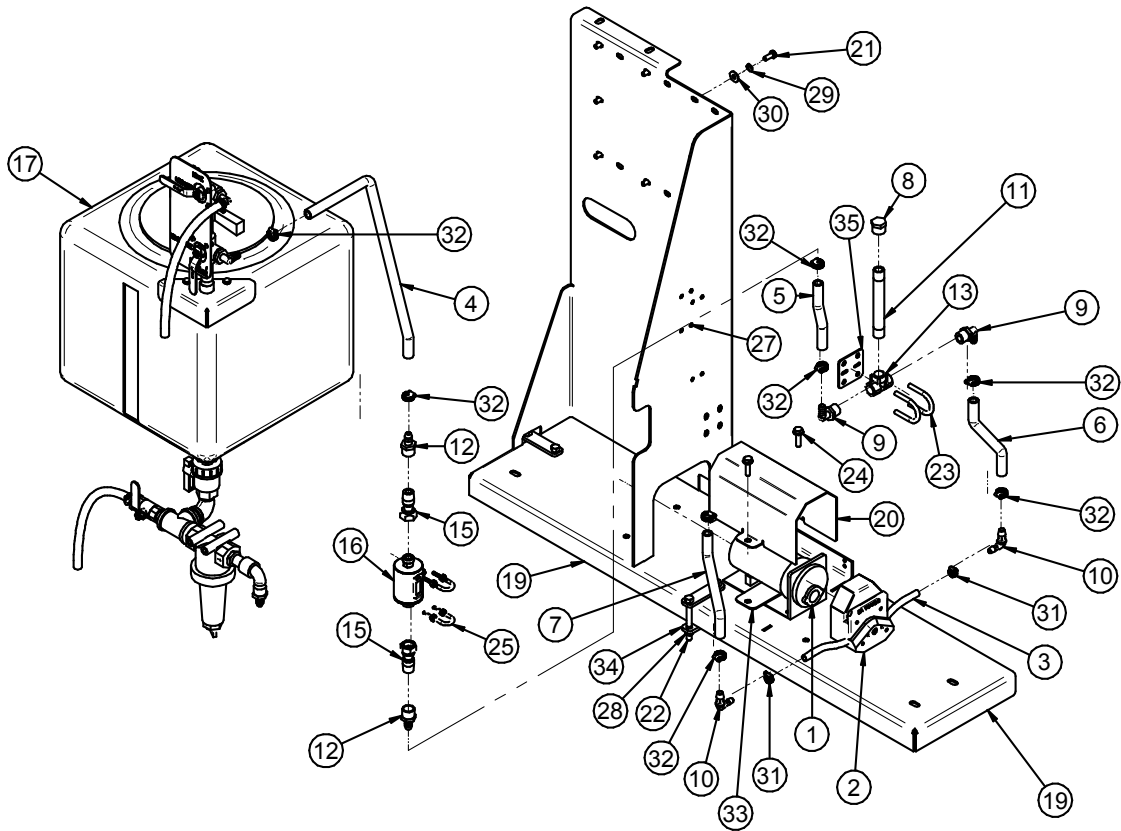
PART #		13-05-0726 REV A1	
Item #	Part #	Description	Qty
1	01-01-0010	MTR .1HP 6-600RPM 90VDC	2
2	02-01-0005	PUMP HEAD PRST MF PS600RPM 956-0025	2
3	02-03-0001	HOSE MF .375 NPRN BLK - LS35 .31 ID	8
4	02-03-0005	HOSE RNT .500 CLEAR	1.5
5	02-03-0005	HOSE RNT .500 CLEAR	1.33
6	02-03-0005	HOSE RNT .500 CLEAR	1.17
7	02-03-0005	HOSE RNT .500 CLEAR	3.33
8	02-05-0086	FTTG END CAP .500 NPT BP	2
9	02-06-0010	FTTG 90 DEG .500HB X .500NPT ML NYL	4
10	02-06-0076	FTTG 90 DEG .500HB X .375HB NYL	4
11	02-07-0060	FTTG NIP .500 NPT X 6.00 TBE PVC	2
12	02-08-0026	FTTG STGHT .500HB X .500NPT FM NYL	4
13	02-09-0005	FTTG TEE .500 NPT PPE	2
14	03-08-0324	CONN TRCK 3PIN MALE BS4131-0/9	2
15	03-13-0039	KIT SW MNL MP .05 HP MTR CHEM TNK	2
16	03-18-0020	FTTG ADPTR G1/2 TO 1/2NPT ML IFM	2
17	03-18-0025	FLMT IFM EFECTOR SM6000 NO NEG FLO	2
18	04-03-0124	NEPTUNE L-1-BK MIXER	2
19	04-03-0320	ASSY AT500 TANK 2 15 GAL	1
20	04-03-0321	ASSY AT500 TANK 1 15 GAL	1
21	05-03-1769	WDMT AT500 PUMP FRM 2	1
22	05-06-0101	WDMT PUMP MTR COVER	2
23	06-01-0003	BOLT .250-20 X .750 SS 18-8	4
24	06-01-0010	BOLT .313-18 X .750 ZP GR5	16
25	06-01-0022	BOLT .375-16 X 3.50 ZP GR5	6
26	06-01-0037	BOLT U .313-18 X 1.00 X .375 ZP GR5	4
27	06-01-0124	BOLT FLG .375-16 X .750 ZP GR5	2
28	06-01-0189	BOLT FLG .375-16 X 1.250 ZP GR5	4
29	06-01-0199	BOLT U .250-20 X 0.75 X 2.25 ZP	4
30	06-03-0002	NUT NYL LOCK .313-18 ZP GR5	8
31	06-03-0007	NUT NYL LOCK .250-20 SS 18-8	4
32	06-03-0013	NUT LOCK FLG .250-20 ZP GR5	8
33	06-03-0014	NUT LOCK FLG .375-16 ZP GR5	12
34	06-04-0002	WSHR LOCK SPLT .313 ZP	16

AT500H TREATER

**ASSEMBLY AT500 DUAL PUMP STAND 15 GALLON (13-05-0726 REV A1)**

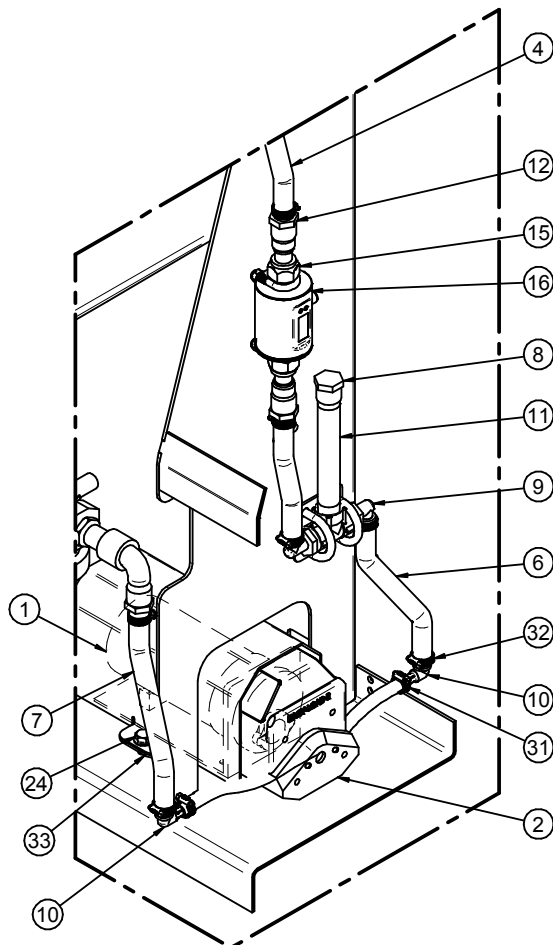
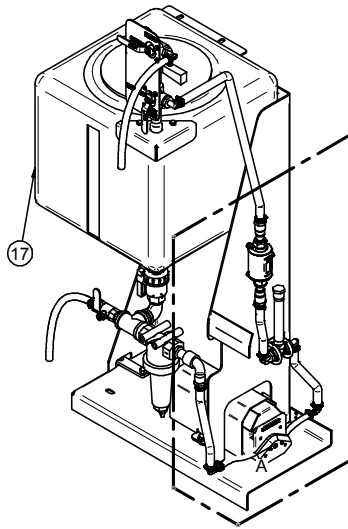
PART #		13-05-0726 REV A1	
Item #	Part #	Description	Qty
35	06-05-0002	WSHR FLAT .250 X .625OD SS 18-8	4
36	06-05-0003	WSHR FLAT .313 ZP	24
37	06-07-0005	CLMP HOSE .219 TO .625 X .313W ZP	4
38	06-07-0006	CLMP HOSE .500 TO .906 X .313W ZP	16
39	09-02-0018	NUMBER 1 FROM 09-02-0018	1
40	09-02-0018	NUMBER 2 FROM 09-02-0018	1
41	102276	BRKT PUMP MOUNT PUMPSTD	2
42	1054C4	MNT CLAMP	6
43	105970	PLT TEE LOCATOR	2
44	106587	WDMT MIXER MNT PLT	2

**ASSEMBLY AT500 DUAL PUMP STAND 15 GALLON NO AGITATION  
(13-05-0744 REV A0)**



AT500H TREATER

**ASSEMBLY AT500 DUAL PUMP STAND 15 GALLON NO AGITATION**  
**(13-05-0744 REV A0)**



DETAIL A

AT500H TREATER

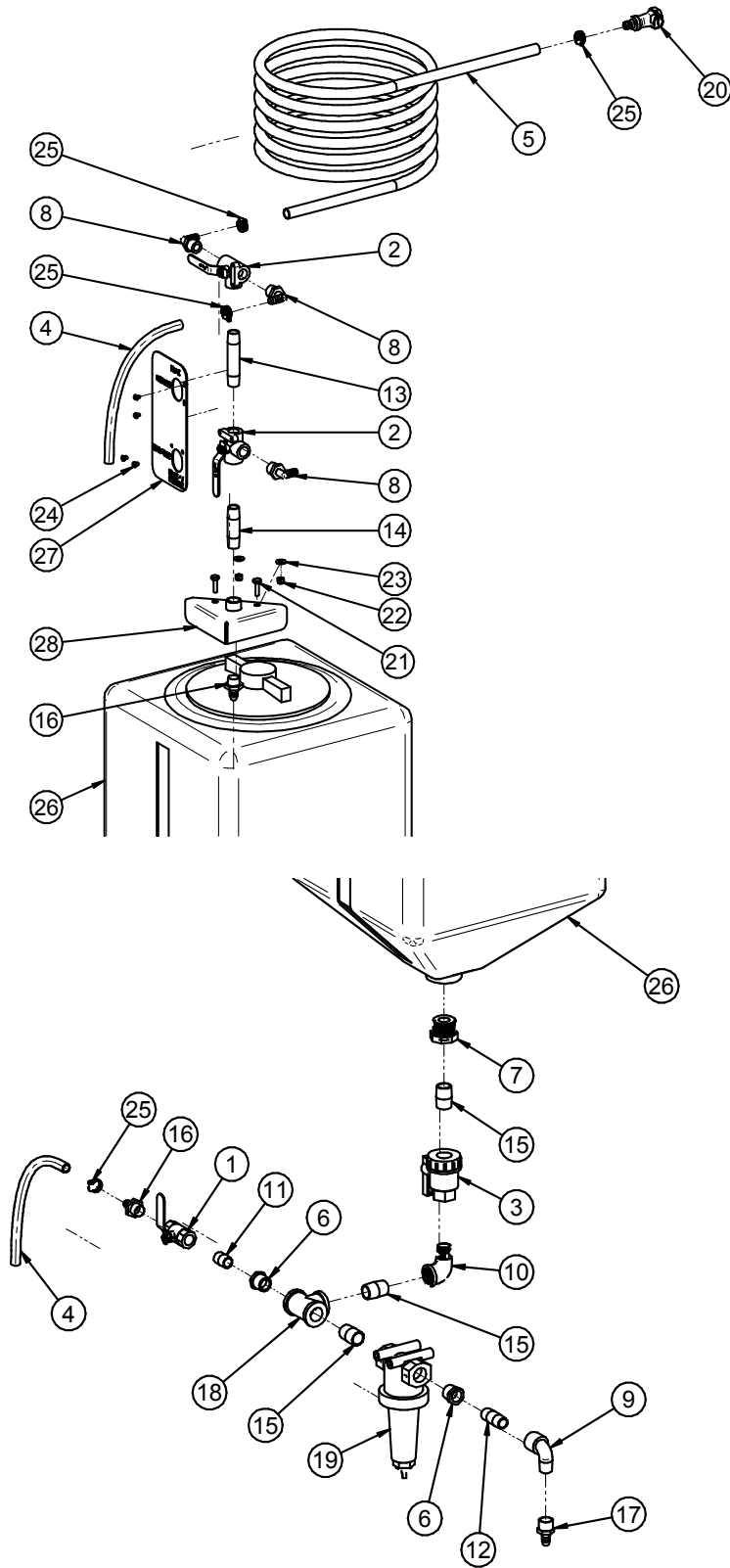
**ASSEMBLY AT500 DUAL PUMP STAND 15 GALLON NO AGITATION**  
**(13-05-0744 REV A0)**

PART #		13-05-0744 REV A0		
Item #	Part #	Description	Qty	See Page
1	01-01-0010	MTR .1HP 6-600RPM 90VDC	2	
2	02-01-0005	PUMP HEAD PRST MF PS600RPM 956-0025	2	
3	02-03-0001	HOSE MF .375 NPRN BLK - LS35 .31 ID	8	
4	02-03-0005	HOSE RNT .500 CLEAR	1.5	
5	02-03-0005	HOSE RNT .500 CLEAR	1.33	
6	02-03-0005	HOSE RNT .500 CLEAR	1.17	
7	02-03-0005	HOSE RNT .500 CLEAR	3.33	
8	02-05-0086	FTTG END CAP .500 NPT BP	2	
9	02-06-0010	FTTG 90 DEG .500HB X .500NPT ML NYL	4	
10	02-06-0076	FTTG 90 DEG .500HB X .375HB NYL	4	
11	02-07-0060	FTTG NIP .500 NPT X 6.00 TBE PVC	2	
12	02-08-0026	FTTG STGHT .500HB X .500NPT FM NYL	4	
13	02-09-0005	FTTG TEE .500 NPT PPE	2	
14	03-08-0324	CONN TRCK 3PIN MALE BS4131-0/9	2	
15	03-18-0020	FTTG ADPTR G1/2 TO 1/2NPT ML IFM	2	
16	03-18-0025	FLMT IFM EFECTOR SM6000 NO NEG FLO	2	
17	04-03-0320	ASSY AT500 TANK 2 15 GAL	1	63
18	04-03-0321	ASSY AT500 TANK 1 15 GAL	1	65
19	05-03-1769	WDMT AT500 PUMP FRM 2	1	
20	05-06-0101	WDMT PUMP MTR COVER	2	
21	06-01-0010	BOLT .313-18 X .750 ZP GR5	16	
22	06-01-0022	BOLT .375-16 X 3.50 ZP GR5	6	
23	06-01-0037	BOLT U .313-18 X 1.00 X .375 ZP GR5	4	
24	06-01-0189	BOLT FLG .375-16 X 1.250 ZP GR5	4	
25	06-01-0199	BOLT U .250-20 X 0.75 X 2.25 ZP	4	
26	06-03-0002	NUT NYL LOCK .313-18 ZP GR5	8	
27	06-03-0013	NUT LOCK FLG .250-20 ZP GR5	8	
28	06-03-0014	NUT LOCK FLG .375-16 ZP GR5	10	
29	06-04-0002	WSHR LOCK SPLT .313 ZP	16	
30	06-05-0003	WSHR FLAT .313 ZP	24	
31	06-07-0005	CLMP HOSE .219 TO .625 X .313W ZP	4	
32	06-07-0006	CLMP HOSE .500 TO .906 X .313W ZP	16	
33	102276	BRKT PUMP MOUNT PUMPSTD	2	
34	1054C4	MNT CLAMP	6	
35	105970	PLT TEE LOCATOR	2	



AT500H TREATER

**ASSEMBLY AT500 TANK 2 15 GALLON (04-03-0320 REV A1)**





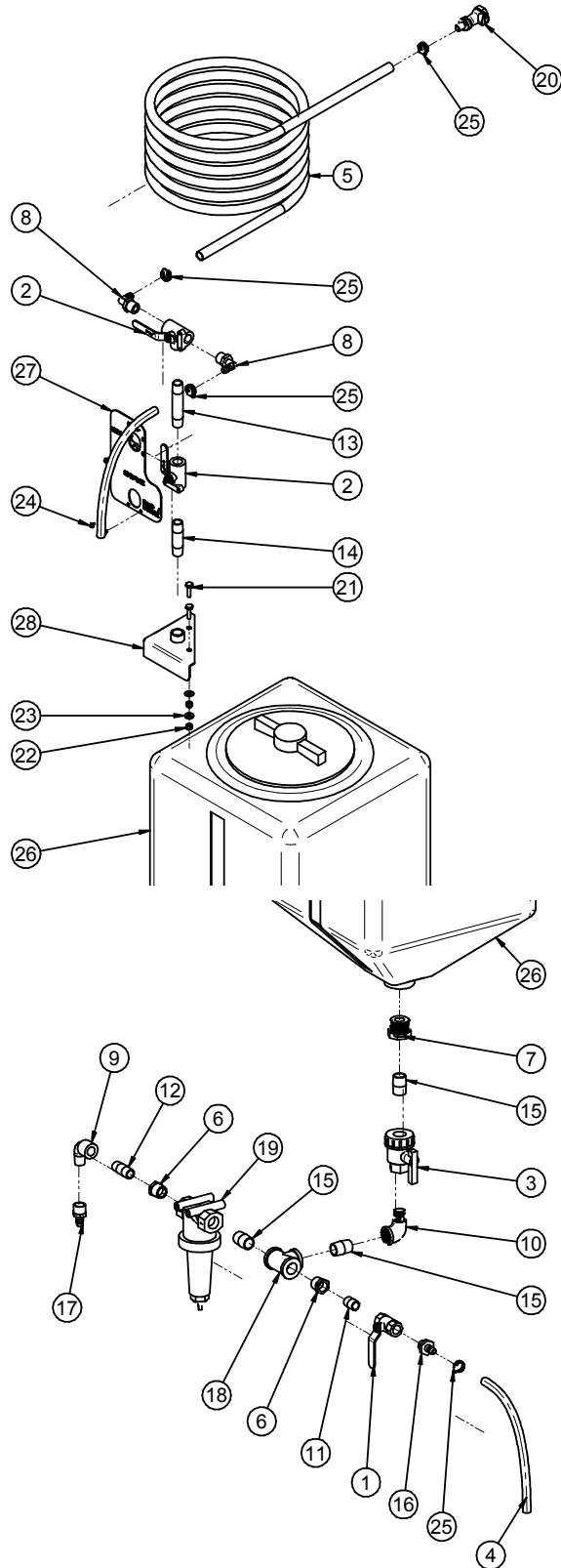
AT500H TREATER

**ASSEMBLY AT500 TANK 2 15 GALLON (04-03-0320 REV A1)**

PART #		04-03-0320 REV A1	
Item #	Part #	Description	Qty
1	02-02-0006	VLV BALL .500 NPT 2WAY BRSS	1
2	02-02-0007	VLV BALL .500 NPT 3WAY BRSS	2
3	02-02-0056	VLV BALL .750 NPT FM PLAS	1
4	02-03-0005	HOSE RNT .500 CLEAR	2
5	02-03-0005	HOSE RNT .500 CLEAR	12
6	02-04-0008	FTTG BUSH .750NPT X .500NPT SS	2
7	02-04-0051	FTTG BUSH 1.25 X .75 PVC	1
8	02-06-0010	FTTG 90 DEG .500HB X .500NPT ML NYL	3
9	02-06-0017	FTTG 90 DEG STRT .500NPT PPE BLK	1
10	02-06-0068	FTTG 90 DEG STRT .750NPT PPE BLK	1
11	02-07-0007	FTTG NIP .500NPTX1.125 TBE SS CLOSE	1
12	02-07-0010	FTTG NIP .500 NPT X 2.00 TBE SS	1
13	02-07-0013	FTTG NIP .500 NPT X 4.00 TBE SS	1
14	02-07-0019	FTTG NIP .500 NPT X 3.00 TBE SS	1
15	02-07-0070	FTTG NIP .750 NPT X 1.50 TBE SS	3
16	02-08-0007	FTTG STGHT .500HB X .500NPT ML NYL	2
17	02-08-0026	FTTG STGHT .500HB X .500NPT FM NYL	1
18	02-09-0008	FTTG TEE .750 NPT FM SS	1
19	02-12-0011	FLTR TEE PPE .750 NPT 16 MESH BANJO	1
20	02-15-0013	FTTG CPLG .500 HB QCK DISC BODY	1
21	06-01-0051	BOLT .250-20 X 1.00 SS 316	2
22	06-03-0007	NUT NYL LOCK .250-20 SS 18-8	2
23	06-05-0002	WSHR FLAT .250 X .625OD SS 18-8	2
24	06-06-0008	SCRW MACH 10-24 X .250 PHLP PNHD	4
25	06-07-0006	CLMP HOSE .500 TO .906 X .313W ZP	4
26	07-02-0044	TNK 15GAL POLY SQUARE	1
27	1054C1	VLV LBL	1
28	1054C3	WDMT VALVE MNT PLT	1

AT500H TREATER

**ASSEMBLY AT500 TANK 1 15 GALLON (04-03-0321 REV A1)**



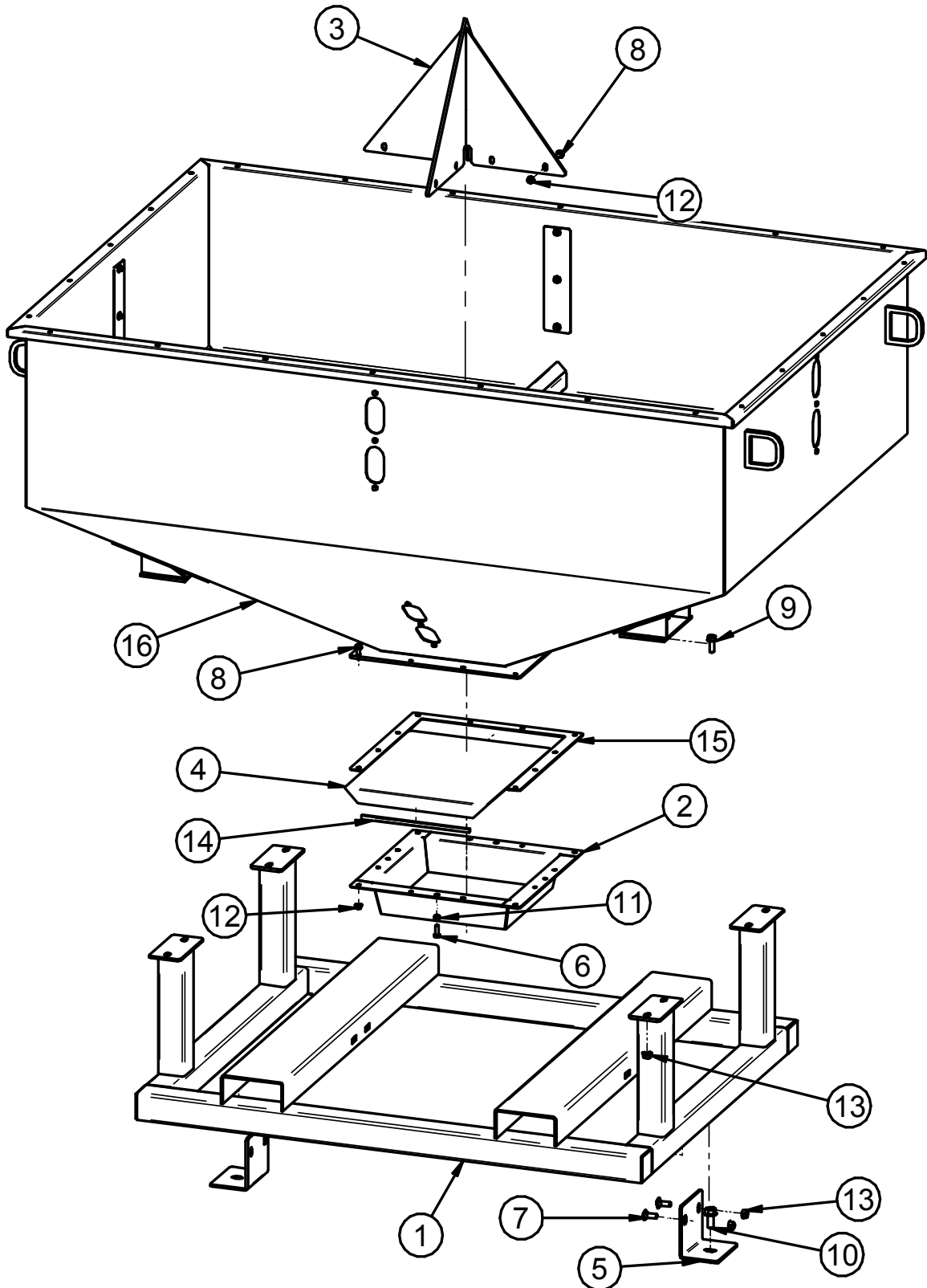
AT500H TREATER

**ASSEMBLY AT500 TANK 1 15 GALLON (04-03-0321 REV A1)**

PART #		04-03-0321 REV A1	
Item #	Part #	Description	Qty
1	02-02-0006	VLV BALL .500 NPT 2WAY BRSS	1
2	02-02-0007	VLV BALL .500 NPT 3WAY BRSS	2
3	02-02-0056	VLV BALL .750 NPT FM PLAS	1
4	02-03-0005	HOSE RNT .500 CLEAR	2
5	02-03-0005	HOSE RNT .500 CLEAR	12
6	02-04-0008	FTTG BUSH .750NPT X .500NPT SS	2
7	02-04-0051	FTTG BUSH 1.25 X .75 PVC	1
8	02-06-0010	FTTG 90 DEG .500HB X .500NPT ML NYL	3
9	02-06-0017	FTTG 90 DEG STRT .500NPT PPE BLK	1
10	02-06-0068	FTTG 90 DEG STRT .750NPT PPE BLK	1
11	02-07-0007	FTTG NIP .500NPTX1.125 TBE SS CLOSE	1
12	02-07-0010	FTTG NIP .500 NPT X 2.00 TBE SS	1
13	02-07-0013	FTTG NIP .500 NPT X 4.00 TBE SS	1
14	02-07-0019	FTTG NIP .500 NPT X 3.00 TBE SS	1
15	02-07-0070	FTTG NIP .750 NPT X 1.50 TBE SS	3
16	02-08-0007	FTTG STGHT .500HB X .500NPT ML NYL	2
17	02-08-0026	FTTG STGHT .500HB X .500NPT FM NYL	1
18	02-09-0008	FTTG TEE .750 NPT FM SS	1
19	02-12-0011	FLTR TEE PPE .750 NPT 16 MESH BANJO	1
20	02-15-0013	FTTG CPLG .500 HB QCK DISC BODY	1
21	06-01-0051	BOLT .250-20 X 1.00 SS 316	2
22	06-03-0007	NUT NYL LOCK .250-20 SS 18-8	2
23	06-05-0002	WSHR FLAT .250 X .625OD SS 18-8	2
24	06-06-0008	SCRW MACH 10-24 X .250 PHLP PNHD	4
25	06-07-0006	CLMP HOSE .500 TO .906 X .313W ZP	4
26	07-02-0044	TNK 15GAL POLY SQUARE	1
27	1054C1	VLV LBL	1
28	1054C3	WDMT VALVE MNT PLT	1

AT500H TREATER

**ASSEMBLY HOPPER AT500 W BAG OPENER (13-04-0256 REV B1)**



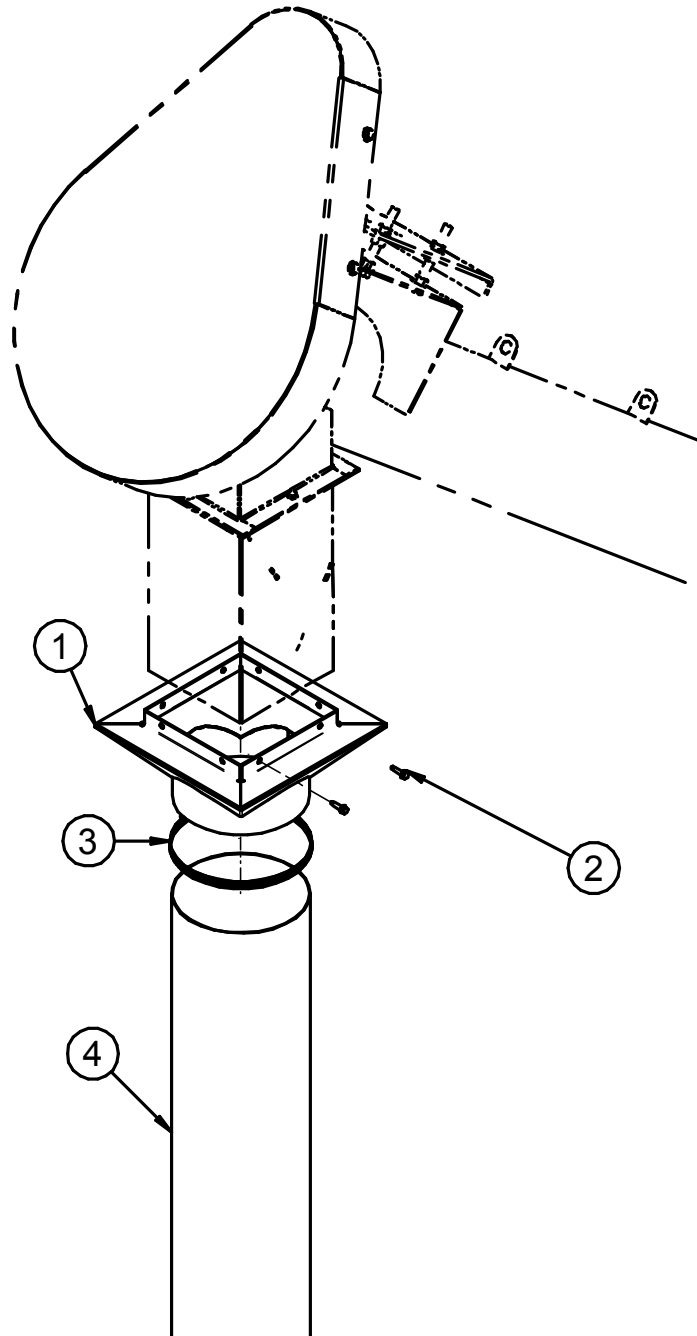
AT500H TREATER

**ASSEMBLY HOPPER AT500 W BAG OPENER (13-04-0256 REV B1)**

PART #		13-04-0256 REV B1	
Item #	Part #	Description	Qty
1	05-03-1809	WDMT FR AT500 50 UNIT	1
2	05-08-0775	WDMT TRANS DSCHG AT500 50 UNIT HOPP	1
3	05-08-0776	WDMT BAG OPENER AT500	1
4	05-10-4730	GATE SLIDE 14X14 AT500 HOPP	1
5	05-10-4731	BRKT HLD DN AT500 50 UNIT HOPP	2
6	06-01-0016	BOLT .375-16 X 1.00 ZP GR5	1
7	06-01-0062	BOLT CRG .500-13 X 1.25 ZP GR5	4
8	06-01-0189	BOLT FLG .375-16 X 1.250 ZP GR5	18
9	06-01-0232	BOLT FLG .500-13 X 1.250 ZP GR5	8
10	06-01-0292	BOLT FLG .625-11 X 1.500 GR5 ZP	2
11	06-02-0003	NUT FULL .375-16 ZP GR5	1
12	06-03-0014	NUT LOCK FLG .375-16 ZP GR5	18
13	06-03-0015	NUT LOCK FLG .500-13 ZP GR5	12
14	06-10-0025	EDGING SGRPG .375DP X .281W BLK	1
15	106458	GATE SPACER	1
16	13-04-0266	ASSY HOPP AT500 50 UNIT W VP	1

AT500H TREATER

**ASSEMBLY AT500 SEED LADDER TO 8 INCH DIA (13-05-0624 REV A1)**



PART #		13-05-0624 REV A1	
Item #	Part #	Description	Qty
1	05-03-1721	WDMT AT500 SD LDR TO 8 DIA	1
2	06-06-0052	SCRW SDST .250-14 X .750 HH ZP	8
3	06-07-0024	CLMP HOSE 7.125 TO 10 X 9/16 SS	1
4	102331	BYPASS DSCHG SPOUT EXT 8ID	1

**INDEX BY PART NUMBER****SECTION  
C****AT500 TREATER PARTS MANUAL**

PART #	REVISION	DESCRIPTION (M2M)	PAGE #
105503	A2	ASSY FLOW CHMBR SHORT	36
04-02-0004	A0	ASSY ATMZR HEAD COT	42
04-03-0254	A2	ASSY STTC MXR & VLVS LPX TRTR QD	43
04-03-0294	A3	ASSY AT500 TANK 1 10 GAL	49
04-03-0295	A2	ASSY AT500 TANK 2 10 GAL	52
04-03-0320	A1	ASSY AT500 TANK 2 15 GAL	63
04-03-0321	A1	ASSY AT500 TANK 1 15 GAL	65
12-04-0048	A3	ASSY LIW GATE AT500	38
13-01-0303	G0	AT500H MNL BOX 230V 1PH	13
13-01-0358	G0	AT500H B2B LIW 2 PMP FLMT 230V 1PH	15
13-01-0360	G0	AT500H B2B LIW 2 PMP 15GAL 230V 1PH	17
13-01-0362	G0	AT500H B2B LIW 2PMP 15G 1PH NO AGT	19
13-04-0256	B1	ASSY HOPP AT500 W BAG OPENER W VP	67
13-05-0624	A1	ASSY AT500 SD LDR TO 8 DIA	69
13-05-0692	D1	ASSY AT500 DUAL PUMPSTAND 2 FLMTR	44
13-05-0726	A1	ASSY AT500 DUAL PMPSTD 2 FLMTR 15GL	55
13-05-0744	A0	ASSY AT500 15G PMPSTD 2 FLMT NO AGT	60
13-08-0689	A1	ASSY AT500H MNL BOX PARTS	26
13-08-0867	A2	ASSY AT500H LIW PARTS 2 PMP RL SCL	33
13-11-0041	A2	ASSY BASE AT500 144IN AUGER RL SCL	21
18-01-0287	A3	ASSY ADJ CHMBR AT500	29
18-01-0358	A2	ASSY ATMZR AT500 LIW CS QD	40

AT500H TREATER

**NOTES:**

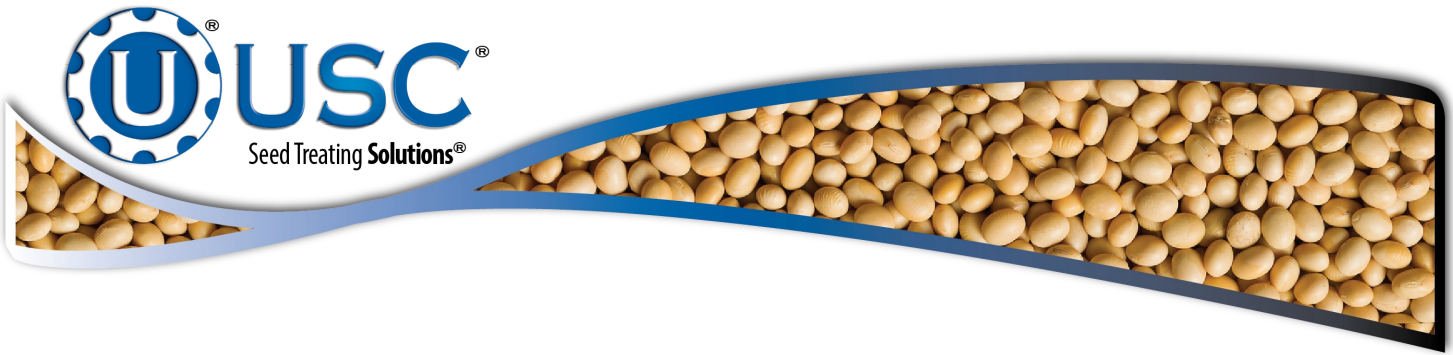


**USC LIMITED WARRANTY****SECTION  
K**

USC, LLC, (Manufacturer) warrants its seed treating equipment as follows:

1. **Limited Warranty:** Manufacturer warrants that the Products sold hereunder will be free from defects in material and workmanship for a period of 18 months from date of shipment. If the Products do not conform to this Limited Warranty during the warranty period, Buyer shall notify Manufacturer in writing of the claimed defects and demonstrate to Manufacturer satisfaction that said defects are covered by this Limited Warranty. If the defects are properly reported to Manufacturer within the warranty period, and the defects are of such type and nature as to be covered by this warranty, Manufacturer shall, at its expense, furnish replacement Products or, at Manufacturer's option, replacement parts for the defective products. Shipping and installation of the replacement Products or replacement parts shall be at the Buyer's expense.
2. **Other Limits:** THE FOREGOING IS IN LIEU OF ALL OTHER WARRANTIES, EXPRESSED OR IMPLIED, INCLUDING BUT NOT LIMITED TO THE IMPLIED WARRANTIES OF MERCHANTABILITY AND FITNESS FOR A PARTICULAR PURPOSE. Manufacturer does not warrant against damages or defects arising from improper installation (where installation is by persons other than Manufacturer), against defects in products or components not manufactured by Manufacturer, or against damages resulting from such non-Manufacturer made products or components. Manufacturer passes on to the Buyer the warranty it received (if any) from the maker of such non-Manufacturer made products or components. This warranty also does not apply to Products upon which repairs and / or modifications have been effected or attempted by persons other than pursuant to written authorization by Manufacturer. This includes any welding on equipment which could damage electrical components. Manufacturer does not warrant against casualties or damages resulting from misuse and / or abuse of Products, improper storage or handling, acts of nature, effects of weather, including effects of weather due to outside storage, accidents, or damages incurred during transportation by common carrier.
3. **Exclusive Obligation:** THIS WARRANTY IS EXCLUSIVE. The sole and exclusive obligation of Manufacturer shall be to repair or replace the defective Products in the manner and for the period provided above. Manufacturer shall not have any other obligation with respect to the Products or any part thereof, whether based on contract, tort, strict liability or otherwise. Under no circumstances, whether based on this Limited Warranty or otherwise, shall Manufacturer be liable for lost profits, lost revenue, lost sales (whether direct or indirect damages), incidental, special, punitive, indirect or consequential damages.
4. **Other Statements:** Manufacturer's employees or representatives' oral or other written statements do not constitute warranties, shall not be relied upon by Buyer, and are not a part of the contract for sale or this limited warranty.
5. **Return Policy:** Approval is required prior to returning goods to Manufacturer. A restocking fee will apply.
6. **Entire Obligation:** This Limited Warranty states the entire obligation of Manufacturer with respect to the Products. If any part of this Limited Warranty is determined to be void or illegal, the remainder shall remain in full force and effect.

US / Canada Non-Exclusive 2016



DOCUMENT REVIEW RECORD	
DATE	BY
03-20	BT

**USC, LLC**

2320 124th road

Sabetha, KS 66534

(785) 431-7900

EMAIL: [sales-team@uscllc.com](mailto:sales-team@uscllc.com)

WEB: [www.uscllc.com](http://www.uscllc.com)

