

SEED TREATING BEST PRACTICES

USC is proud to be the industry's leader and innovator in seed treating and handling equipment. Over the company's 20-plus year history, the industry has relied on USC's professional expertise to outline a variety of best practices. The most important of which are highlighted below for the betterment of your treating operation, to prolong the life of your USC equipment, and to provide the most return on your overall investment.

1. Evaluate seed treating equipment based on operational plans for upcoming season.

- Determine treatment needs for upcoming season and method of delivery to treater.
- Always create and conduct treating in a closed-looped treating system to prevent contamination.
- Evaluate need for additional pump stands, automation advances, metering preferences, and/or other treating accessories and updates.
- Evaluate any potential upgrade options to ensure efficient, up-to-date equipment is in use.



LPX2000 TREATER

2. Implement pre-season maintenance routine to protect, and extend the life and value of the equipment.

- Conduct overall visual inspection of equipment. Look for worn or broken parts that may need to be repaired or replaced.
- Grease bearings, tighten and lubricate chain, and check and replace any broken fittings.
- Coverage is key! Use USC's patented atomizer and atomizing chamber technology for the most accurate and consistent seed application.

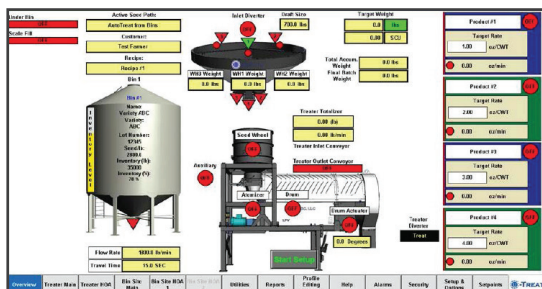


- Confirm treatment lines are flushed and clear of debris. Order extra treatment hoses to have on hand for the treating season.
- Examine electrical connections, fuses and power cords for general wear.
- Inspect conveyor belts - check for wear and adjust tension and alignment as needed.
- Check the operation and functionality of manual gates on each bin.

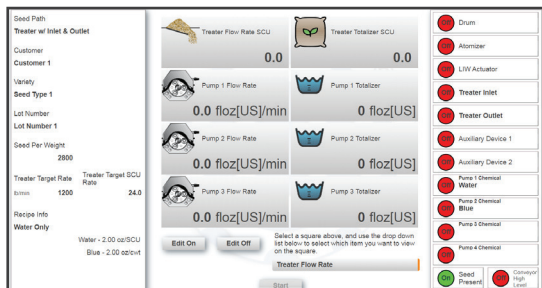
SEED TREATING BEST PRACTICES

3. Plan ahead by prepping and populating U-Treat automation preferences.

- U-Treat automation platform stores up to 500 customers, and seed and chemistry profiles.
- U-Treat automation platform allows operator to track inventory. Update each bin's seed inventory.
- Determine and set desired seed flow rate.
- Test remote connection to ensure USC's support team can access equipment if service is needed.



U-TREAT AUTOMATION



4. Calibrate, certify and check that all seed treating equipment is compliant and functional.

- Confirm USC underbin gates are set at preferred opening based on desired flow rate.
- Calibrate seed metering device(s): seed metering wheel, loss-in-weight, weigh belt.
- Calibrate treatment metering device(s): manual, flow meter, loss-in-weight pump stands.
- Complete annual certification of USC's Tri-Flo® or weigh hopper, ensuring legal for trade status.

5. Implement post-season maintenance plan to prepare equipment for storage.

- Review year-end treating report(s), and back-up to external drive for operational records.
- Remove debris, flush treatment and confirm all equipment is free of seed and other leftovers.
- Remove, disassemble, clean and reassemble atomizer within the atomizing chamber.
- Lubricate chains, grease bearings, and take inventory on any worn parts needing replacement.
- Cover all treating equipment for duration of off-season.