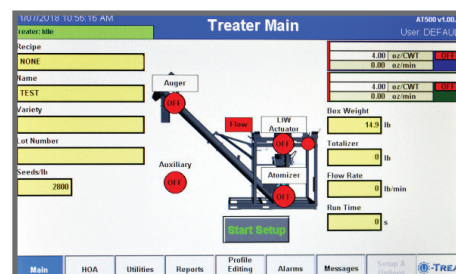
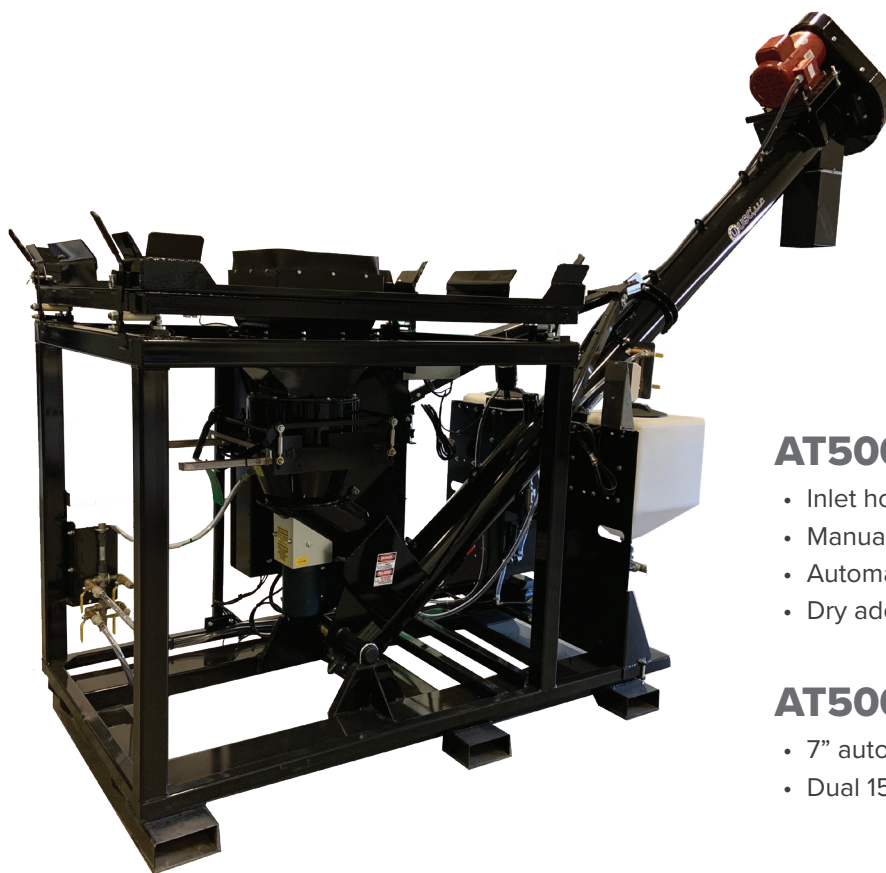


AT500H™

The AT500H™ from USC offers the perfect solution for small scale seed treatment. The compact design and patented slide-out atomizer makes this one of the most simple, cost-effective treaters on the market.

FEATURES & ADVANTAGES

- Continuous flow seed treatment.
- Treats up to 800 lb./min.
- 12' poly flighted auger.
- 8" poly cupped flighting.
- Slide out atomizer for quick clean-up.
- Four port static mixer.
- 2" NPT port for dry additive input.
- 230V, 1PH electrical panel includes all motor controls.
- Loss-in-weight or multi-position manual adjustable chamber metering options.
- Supports up to 500 customer list.



AT500H™ ACCESSORIES

- Inlet hopper with bag cutter.
- Manual treater for box.
- Automated treater with box-to-box loss-in-weight.
- Dry additive feeder.

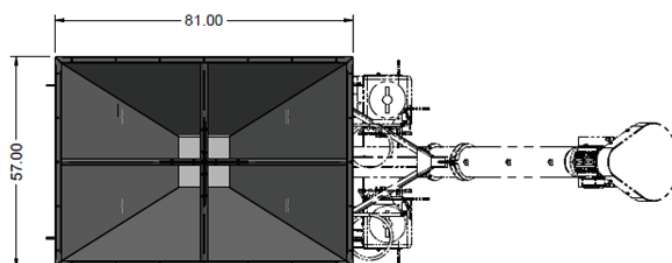
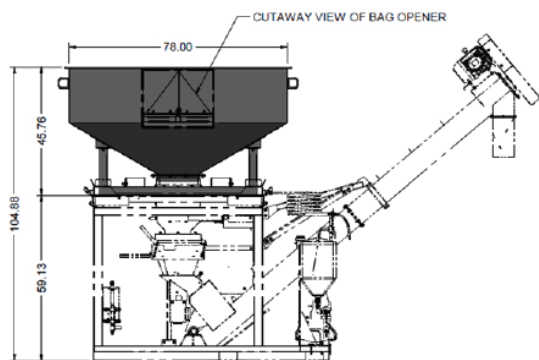
AT500H™ OPTIONS

- 7" automated touchscreen or manual controls.
- Dual 15 gallon tanks with agitation and dual flow meters.

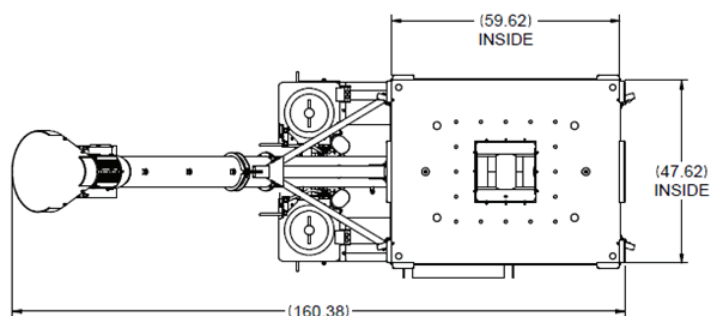
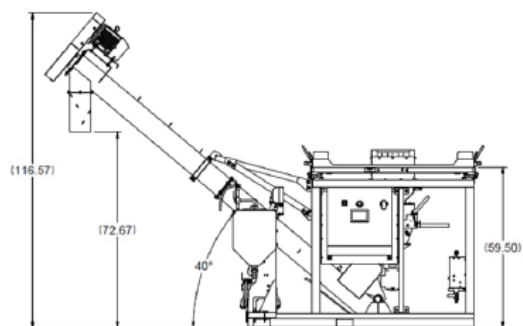
AT500H™

AT500H™ DIMENSIONS

AT500H™ Automated Treater with Hopper and Bag Opener



AT500H™ Automated Treater with Box-to-Box Loss-in-Weight/Seed Metering Technology



AT500H™ Manual Treater

