

# AT500H SEED TREATER

USC's patented and proven AT500H treater's compact design creates the most versatile solution for any-sized seed treatment operation. The AT500H has been available to the downstream market for more than 15 years perfecting treatment application and automation technologies.

This treater protects seed with a gentle, poly-flighted auger, accurately treats everything from corn and soybeans to cereal grains, and brings simplicity to the treating process with intuitive and trusted automation functionalities.

**ALL AT THE PERFECT PRICE.**

## FEATURES & ADVANTAGES

- Continuous flow seed treating up to 800 lb./min.
- 12' poly-flighted auger.
- 8" poly-cupped flighting.
- Slide-out atomizer and four-port static mixer.
- 2" NPT port for dry additive input.
- 230V, 1PH electrical panel includes all motor controls.
- Loss-in-weight or multi-position manual adjustable chamber metering options.
- Supports up to 500 unique customers.
- Automated touchscreen or manual controls.
- 15-gallon tank with agitation and flow meter.
- Conveniently access seed box gate at eye-level.
- Dry additive feeder (accessory)
- Inlet hopper with bag cutter (accessory)



SCAN, CALL  
OR E-MAIL  
FOR MORE  
INFORMATION!

JOSH GANN  
785.431.7943  
JOSHGANN@USCLLC.COM



# AT500H

## ADDITIONAL DETAILS

**OPTIONAL DUAL TREATMENT PUMPS/TANKS**



**STAND-ALONE, 15-GALLON PUMP STAND**



**ON-BOARD, 15-GALLON PUMP STAND**



### HOW USC COMPARES TO THE COMPETITION

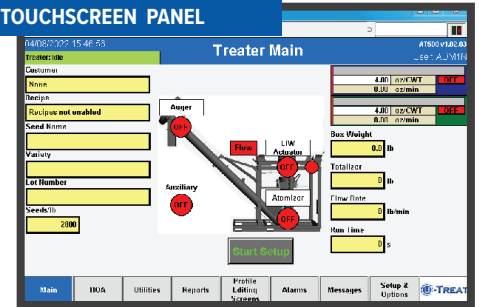
The exceptional performance of the AT500H far exceeds the competition, bringing significantly more advantages to treating operations. Here are a few:

- **SMALLEST FOOTPRINT:** AT500H's compact 5'x7' footprint saves space, allowing more room for valuable inventory.
- **EFFORTLESS OPERATION:** Designed to value your time, the AT500H is so simple to use, your most valuable resource will be spent treating - not wasted on training or troubleshooting.
- **TRUSTED & EXPERIENCED:** AT500H has been available for more than 15 years, this machine has been tested and perfected.
- **PROVEN TECHNOLOGIES:** Nothing compares to USC's patented atomizer at the heart of each treater, combined with the AT500H's gentle, poly-flighted auger and the industry's most accurate metering methods.
- **SERVICE/SUPPORT:** USC's national footprint provides prompt service and support. If you need us, we'll be there!



SCAN TO TAKE A TOUR OF THE AT500H TREATER

**INTUITIVE AUTOMATION TOUCHSCREEN PANEL**



**EASY ACCESS SEED BOX GATE OPENING**



**SIMPLE & ACCESSIBLE SLIDE-OUT ATOMIZER**



SCAN OR CALL FOR MORE INFORMATION!

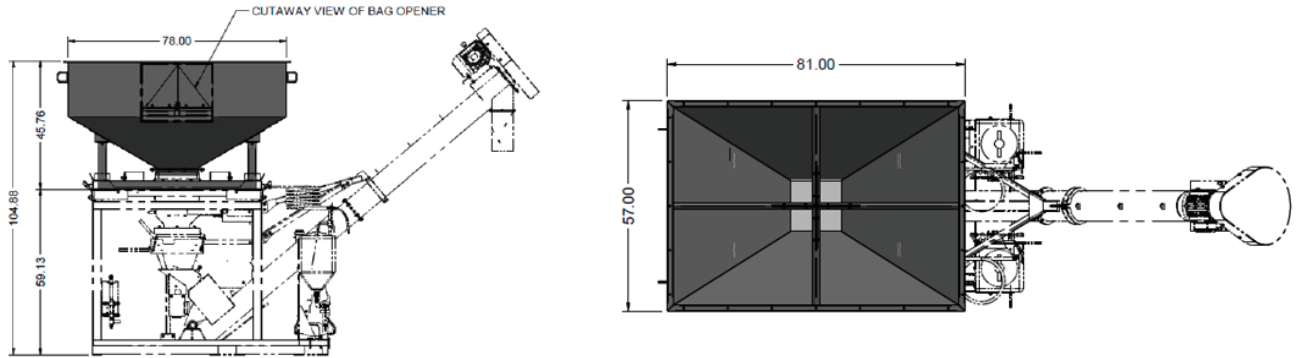




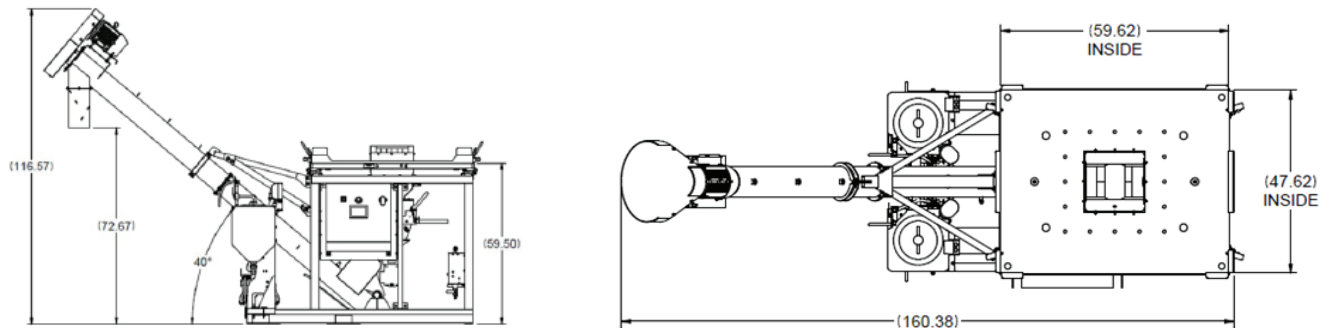
# AT500H

## DIMENSIONS

### AT500H Automated Treater with Hopper and Bag Opener



### AT500H Automated Treater with Box-to-Box Loss-in-Weight/Seed Metering Technology



### AT500H Manual Treater

