

Connectivity & Confidence

15+ Years Ahead in Remote Support.

Some competitors claim they're the only ones with remote connectivity. Truth is, USC has been doing it longer—and doing it better.

Since 2007, U-Connect has been giving operators the ability to get help without waiting on costly service trips. From dial-up to today's embedded U-Connect Pro, it's a proven lifeline that keeps plants running.

With U-Connect built into V5, you get:

- USC's customer support team's remote access to your control panel
- Secure, customer-controlled data
- No service contracts. No nonsense. Just performance and reliability

"When your season's on the line, you don't need flash. You need a system that just works — proven, precise, and ready."

USC, LLC

Web: www.uscllc.com | Phone No.: 785-431-7900 |

Address: 2320 124th Road, Sabetha, KS



Introduction

Modern Automation. Blue-Collar Toughness.

For years, seed operators have counted on USC's U-Treat® automation to keep treating lines running strong. With Version 5, we've built on that trusted foundation keeping the rugged toughness you expect, and adding smarter, faster controls that make life easier in seed facilities across the world.

Born in Sabetha, Kansas. Built for operators who need automation that works as hard as they do.

Trusted by seed facilities since 2007 | Over a thousand systems nationwide
Made & supported in the USA



U-TREAT V5 AUTOMATION

What's New in V5

Smarter Screens. Stronger Control.

The new U-Treat V5 system delivers more power, more clarity, and more confidence on the job. Designed with operators in mind, it combines rugged hardware with an interface that anyone can learn quickly.

Key Features:

One-screen overview

see the treater and bin site at a glance.

Built-in U-Connect Pro

remote USC support with no subscriptions.

Printer-ready (8.5" x 11")

generate clear job tickets and reports.

15.6" industrial touchscreen

built tough, glove-friendly.

Data View screen

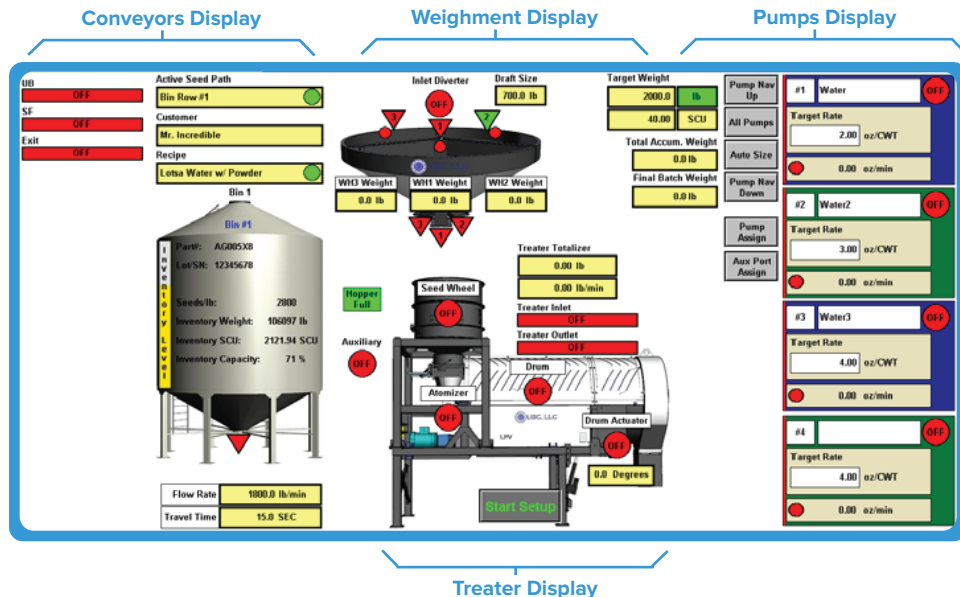
new text-based report view for quick checks.

Advanced inventory tracking

manage varieties, bins, lots, and customers.

ERP & database integration

ready to connect when you are.



*"No technical expertise required - just treat seed.
U-Treat V5 makes the process that simple"*

What you wanted section

What you are doing section

What is happening section

The screenshot shows the U-Treat V5 system interface, divided into three main sections:

- Input Data:** Customer (Mr. Incredible, 1200 Park Avenue, Emeryville, California, (510) 922-3000), Seed (Part: AG005X8, Lot/SN: 12345678, SeedsPerUnit: 140000, SeedsPerWeight: 2800, Source: Bin #1, Source Qty: 106097, Path: Bin Row #1, Flow Rate: 1800 lb/min, Travel Time: 15.0 seconds, Target Qty: 0), Recipe (Name: Loba Water w/ Powder, Water: 2.0 oz/CWT, Water2: 3.0 oz/CWT, Powder: 5.0 oz/CWT, Use Aux: Semi-Automated Device).
- Process Status:** Main: Idle, Transport: Idle, Weight: Idle, Inbound Rate: 1800 lb/min, Travel: 15.0 sec, Weighted: 0 / 2000 = 0.0% (lbs), Treater: Idle, AG005X8, Rate: 0 / 1200 = 0.0% (lbs/min), Total: 0 / 2000 = 0.0% (lbs), Flow Rate (fior/min): Water (P 1) 0.0 / 24.0 = 0.0%, Water2 (P 2) 0.0 / 36.0 = 0.0%, Powder (A 1) 0.0 / 36.0 = 0.0%.
- Affected Hardware Status:** Bin Gate 1: closed, Transport Path: IB : off, SF : off, Exit : off, Tri-Flo: Inlet: Hopper 2 : 0.0 / 700 = 0.0%, Outlet: 0.0 / 700 = 0.0%, Treater: High Sense: TRUE, Seed Prox: TRUE, Seed Meter: off, Atomizer: off, Drum: off, Drum Tilt: 0.0 deg, Aux: false, Pumps: 1: Mtr: 0% Wt: 0.0 lbs, 2: Mtr: 0% Wt: 0.0 lbs.

For Every Operator

Whether It's Your First Treater or Your Fifth.

No two operators are the same. Some are just starting out, others have run U-Treat for years. V5 is built to serve both.

For New Operators:

- Simple navigation and a guided Start Wizard to get you running fast.
- On-screen help menus, operator's manuals and safety alerts keep things clear.
- Reliable alarms keep you in control, not guessing.
- Email-ready reporting right out of the box.

For Seasoned Vets:

- **Recipe & rate locking** for precision control.
- **Highly Configurable Architecture:** supports past hardware & future upgrades.
- **Remote Access Options:** from your phone or tablet via wireless VNC
- **Data Management Enhanced:** smooth inventory, recipe & record handling

Whether you're new to treating or a veteran, V5 puts you in charge.